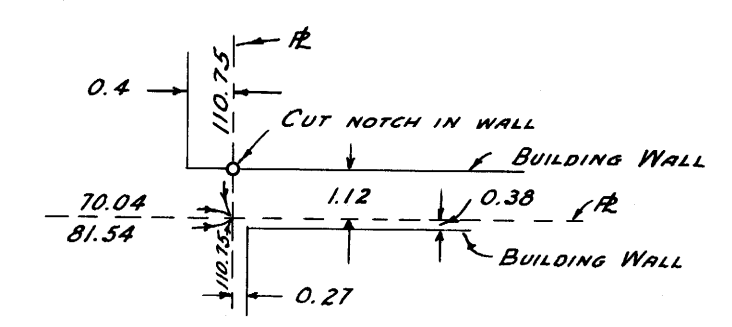
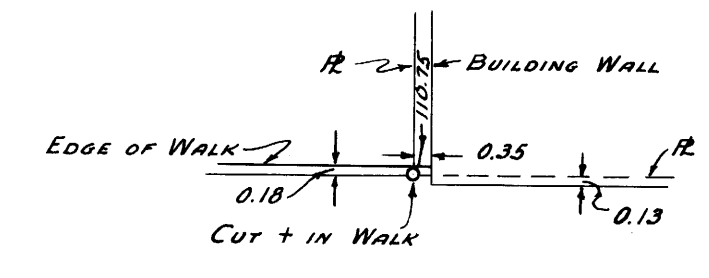


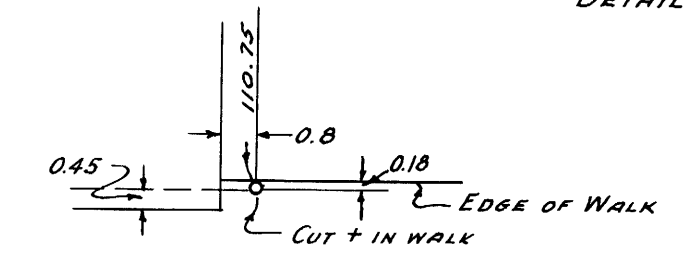
DETAIL A



DETAIL B



DETAIL C



DETAIL D

NOTE:-
 THIS SURVEY CONFIRMS DATA CONTAINED IN PREVIOUS
 SURVEYS OF RECORD:- SEE C.S. FILE 34/46, 36/2, &
 37/156. FOR OVERALL DISTANCES.
 DETAILS NOT TO SCALE.

NOTE:-
 DISTANCES SHOWN ON E'S OF THIS BLOCK OBTAINED
 BY DOUBLE CHAINING, USING SPRING BALANCE.
 ANGLES TURNED THREE TIMES.

COUNTY SURVEYOR'S OFFICE
 DOUGLAS COUNTY, OREGON

SURVEY TO ESTABLISH LOT
 CORNERS, BLOCK 49, ROSEBURG,
 OREGON.

Ben B. Irving

BEN B. IRVING COUNTY SURVEYOR
 SURVEYED JAN. 23, 1953 SCALE 1" = 40'
 SURVEYED FOR J.F. DILLARD