

COUNTY SURVEYORS FILE
DO NOT REMOVE THIS FILE

SECT. 8, T. 21 S., R. 5 W. WM.

for

Harold Woolley

1957

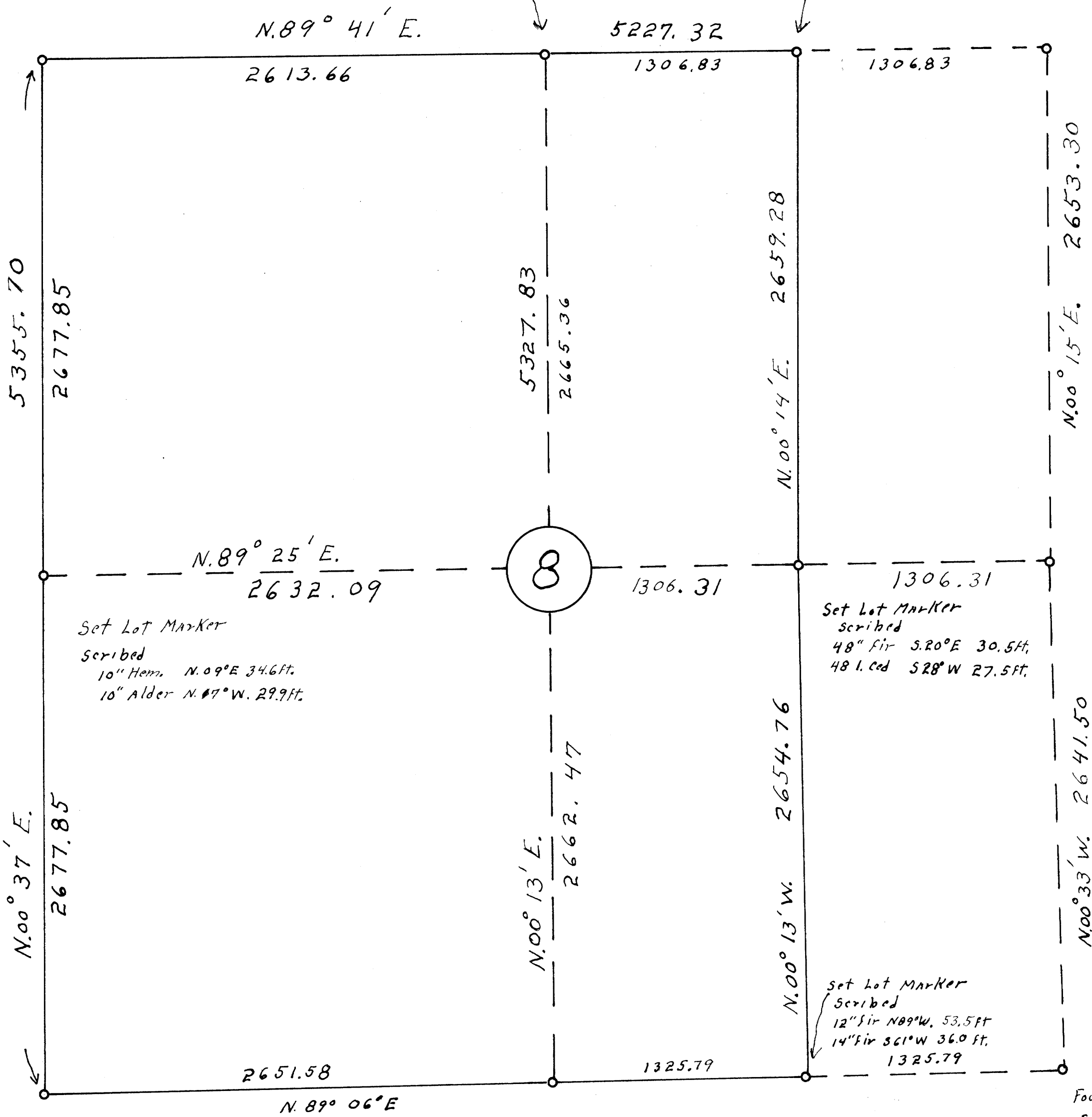
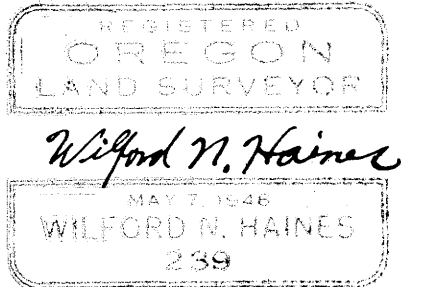
Scale 1"=500'

Note: Lot Markers shown on this map are 1"x1"x36" T Irons with 1/2" Brass caps inscribed Wilford N. Haines # 239 Drain, Oregon, survey point.

Found Lot Marker
36" Fir stump N49°E 65-1ks
16" dogwood S85°E. 40-1ks
10" Fir S85°E 25.3 ft.

Set Lot Marker
Scribed
8" Fir S35°W. 25.5ft.
12" Fir N25°E 28.5ft.

Set Lot Marker
Scribed
40" Fir S20°W 41.3ft.
48" Fir N53°W 12.0ft.



Found all old B.Ts. down
Set Lot Marker

Found Both Maple B.Ts.
Set Lot Marker
Scribed
12" Fir N52°E. 54.4 ft.

Set Lot Marker
Scribed
10" Hem. N.09°E 34.6ft.
10" Alder N.07°W. 29.9ft.

Set Lot Marker
Scribed
48" Fir S20°E 30.5ft.
48" L. ced S28°W 27.5ft.

Set Lot Marker
Scribed
12" Fir N89°W. 53.5ft.
14" Fir S61°W 36.0 ft.
1325.79

Found Stamp B.T. S17°W. 61-1ks
Scribed 36" Fir N17°W. 40.5 ft.

Found
Stump + Long but 50" Fir
S27°E. 17-1ks
Roots of 50" Fir S42°W. 9-1ks
Set Lot Marker.

Set Lot Marker
Scribed
16" Fir S. 31 1/2° W. 15.0ft.
8" Maple N. 33° W. 23.9 Slope

SEE U.S. 44/87 for B.Ts.
AS FO. BY SURV. OFFICE, 1962

FILED
RECEIVED

JAN 31 1957

COUNTY SURVEYOR
DORSEY COUNTY, OREGON