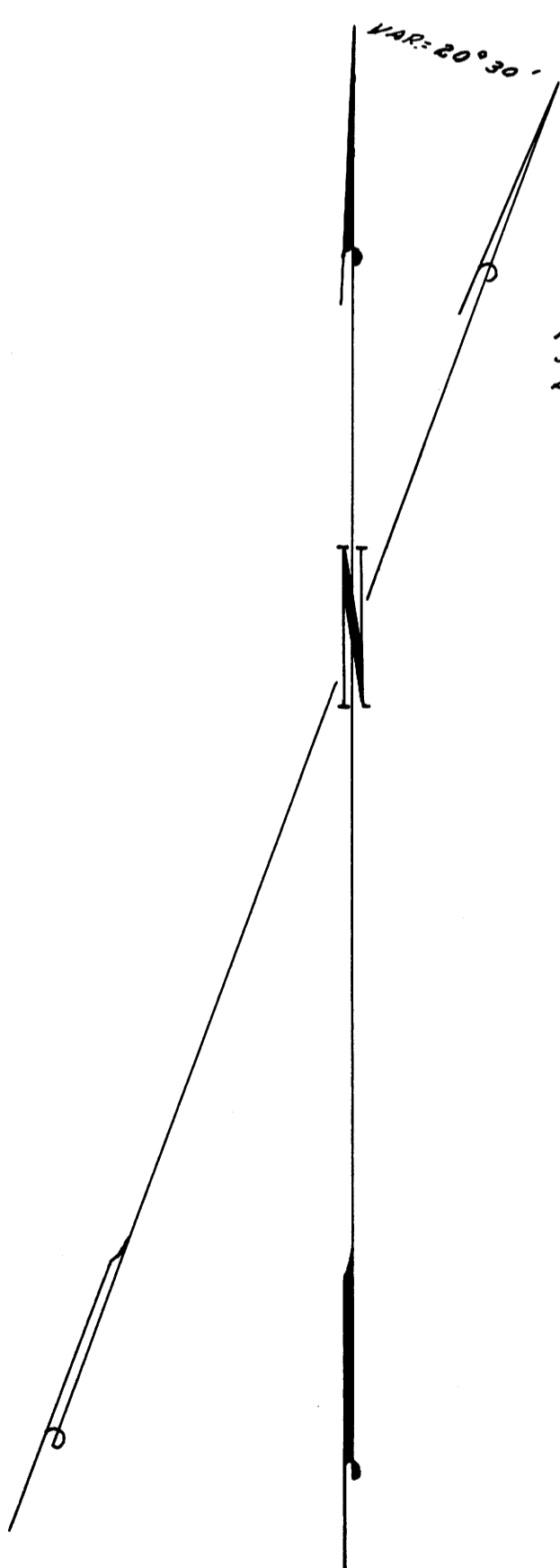
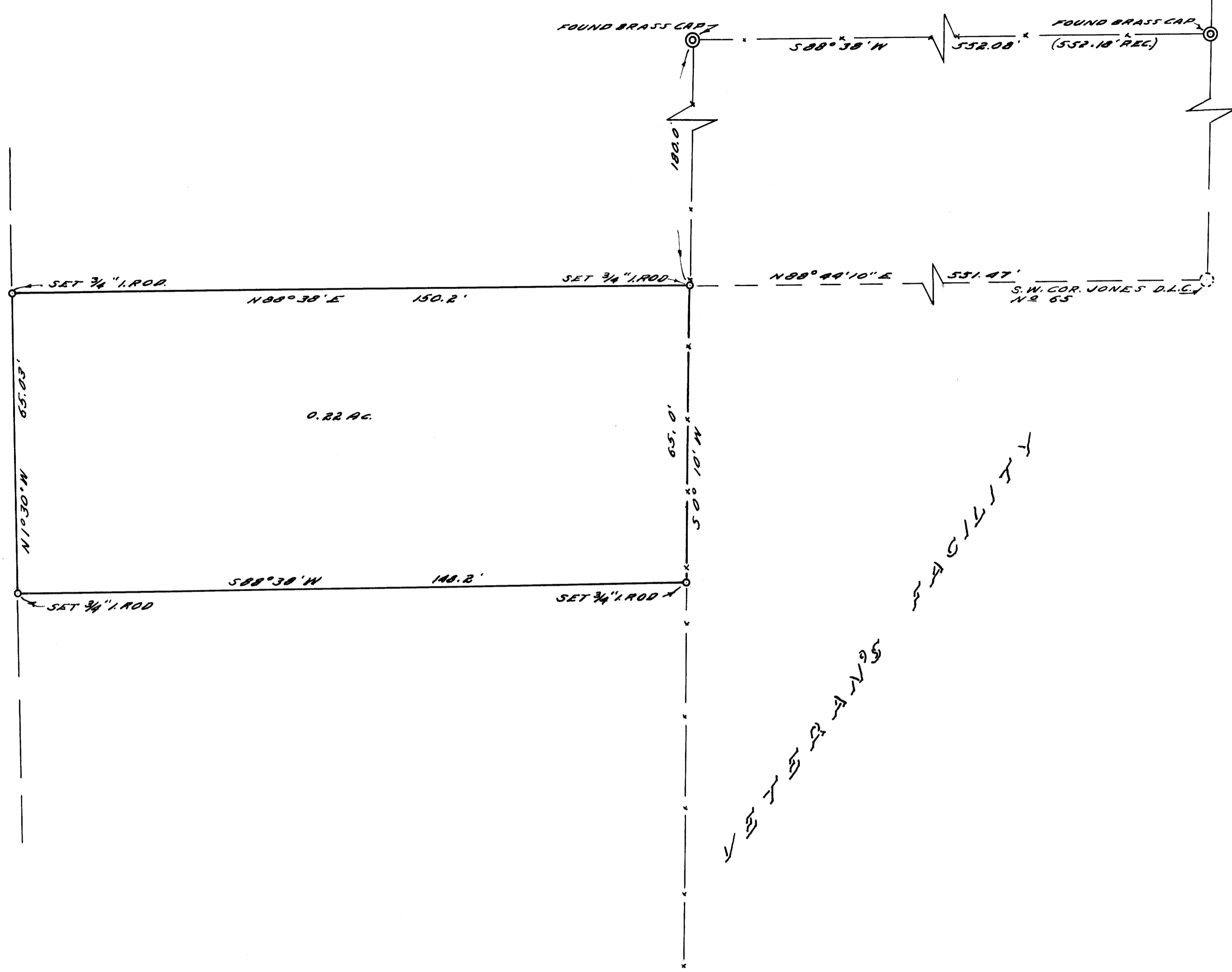


KEASEY ROAD



NOTE: BEARINGS BASED ON 588°38' W ALONG VETS. PROPERTY BETWEEN FOUND BRASS CAPS.

COUNTY SURVEYOR'S OFFICE  
DOUGLAS COUNTY, OREGON

SURVEY TO MONUMENT CORNERS -  
SECTION 14, T27S., R6W., W.M.

FRED M. DARBY COUNTY SURVEYOR  
SURVEYED JAN. 14, 1958 BY  
JAMES W. BYRON - DEPUTY SCALE 1" = 20'  
SURVEYED FOR G. F. REYNOLDS

REGISTERED  
OREGON  
LAND SURVEYOR

*James W. Byron*

200 S. 10th  
JAMES W. BYRON  
1958

COUNTY SURVEYORS FILE DA  
DO NOT REMOVE FROM FILE

CS FILE FOLDER

CONTAINS

MORE

INFORMATION