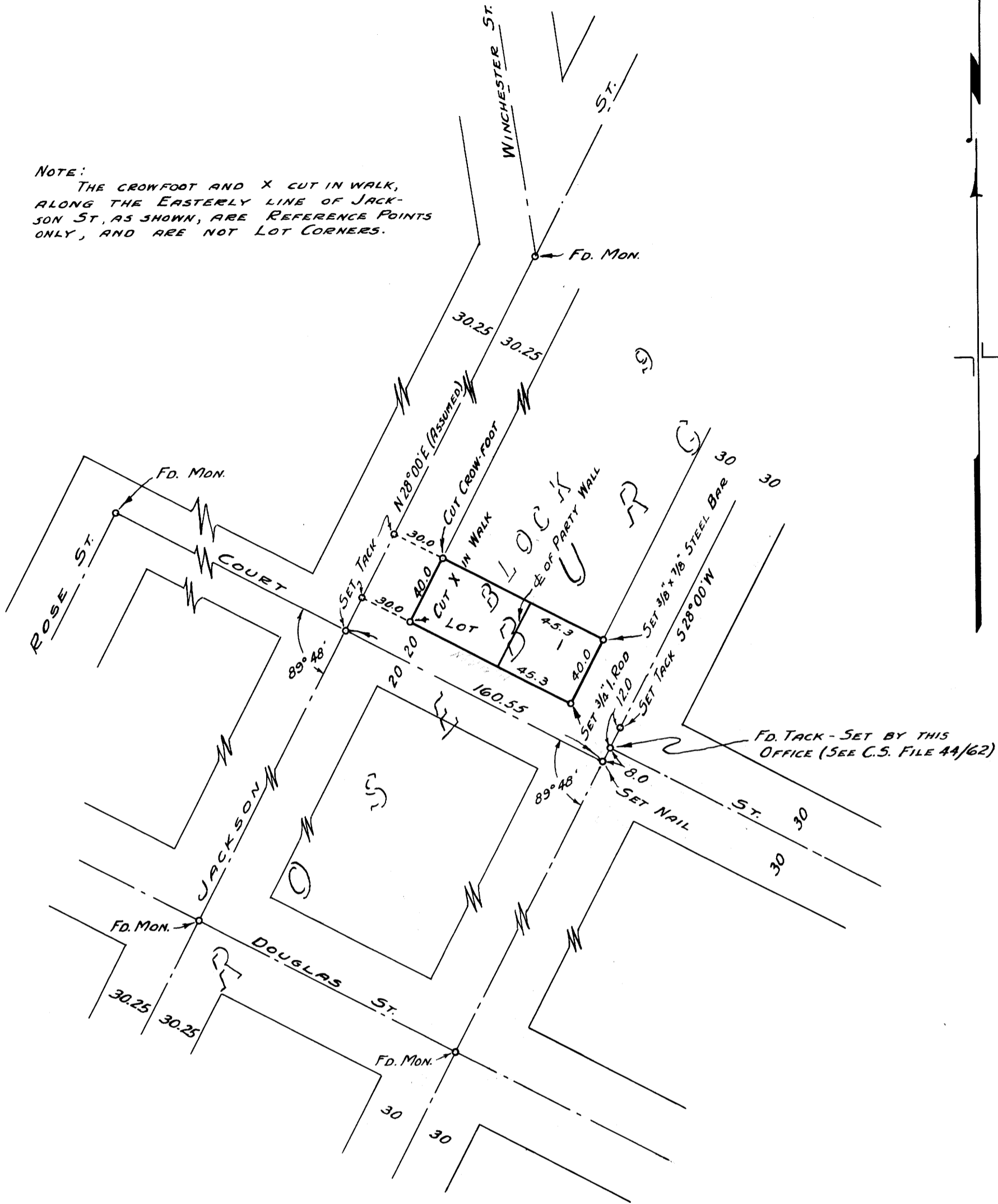


NOTE:
THE CROWFOOT AND X CUT IN WALK,
ALONG THE EASTERLY LINE OF JACK-
SON ST. AS SHOWN, ARE REFERENCE POINTS
ONLY, AND ARE NOT LOT CORNERS.



COUNTY SURVEYOR'S OFFICE
DOUGLAS COUNTY, OREGON

SURVEY TO SET PROPERTY
CORNERS.

BEN. B. IRVING COUNTY SURVEYOR
SURVEYED JUNE 15, 1951 BY
N. E. RICHARDSON DEPUTY

SCALE 1" = 60'

N. E. Richardson