

F.D. OLD COR. TREE AT END OF FENCE  
EVIDENCE OF 3 OLD FENCES - MARKED  
16" W. OAK - N 32° W 20.7 - C.S.B.T.

(WEST 64.50 CHS.)

SET 5/8" I. ROD  
RE-MARKED OLD B.T.'S IN BARK;  
10" FIR (NOW 24") N 15° 30' E 12 LKS.  
10" LAUREL S 89° W 18 LKS.

31 32  
6 5  
T 255, R 6W.  
T 265, R 6W.

(2.0 CHAINS)

SET 1" I.P. - BRASS CAP MK'D. 1/45  
32 T 255 R 6W - LOCATED FROM  
3 T 265 R 6W - O.B.T. - 12" Y. OAK  
SNAG - N 11° 15' W 261 LKS. - BLAZED - NO  
SCRIBING VISIBLE - CHECKS WITH COR.  
2 CHS. NORTH. BLAZED AND SCRIBED  
NEW B.T.'S.  
24" FIR - N 3° E 25.6 - 1/4532 - C.S.B.T.  
24" FIR - S 35° W 24.0 - 1/455 - C.S.B.T.

LOT 1  
SUBDIVISION OF THE N.T. DAY ESTATE  
(SEE CO. SURVEYORS F.B. 7-PG. 39)

(50° 16' W 25.95 CHS.)

SET 3/4" I. ROD AT FENCE COR.  
OLD B.T.'S DOWN, F.D. SCRIBING  
MK'D. NEW B.T.'S -  
12" FIR - S 83° 50' E 81.4'  
18" W. OAK - N 49° 40' E 75.0

SET 3/4" I. ROD ON  
HIGH BANK OF RIVER

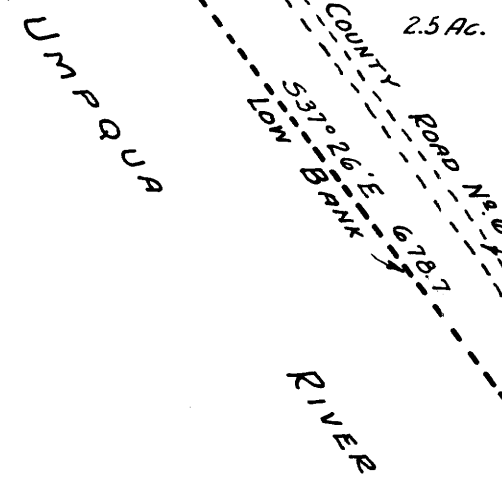
(WEST 40.12 CHS.)

SET 5/8" I. ROD FROM 30" B. OAK N 48°  
30' W 15 LKS. - DOWN & BURNED  
FENCE COR. IN PROPER LOCATION  
10" W. OAK - N 70° E 2.77 - C.S.B.T.  
10" W. OAK - N 40° W 23.3 - C.S.B.T.

NOTE -  
DATA SHOWN THUS (40.12 CHS.) IS  
TAKEN FROM "SUBDIVISION OF N.T. DAY  
ESTATE" SURVEY.

SET 3" I.P. - IN CO. RD. CUT-BANK  
POSITIONED FROM O.B.T. - W. OAK  
SNAG N 39° 45' E 58 LKS. - PART  
OF SCRIBING VISIBLE  
MK'D. 30" W. OAK - N 45° E 52.5 - M.C. 55. C.S.B.T.  
" 24" B. OAK - N 30° W 119.1 - M.C. 56. C.S.B.T.

SET 3/4" I. ROD - MK'D. 12" MAPLE  
N 73° E 4.3'



COUNTY SURVEYORS  
DO NOT REMOVE

COUNTY SURVEYOR S OFFICE  
DOUGLAS COUNTY. OREGON

SURVEY FOR DEED DESCRIPTION  
AND TO RENEW PROPERTY COR-  
NERS.

*Ben Irving*

BEN. B. IRVING COUNTY SURVEYOR  
SURVEYED DEC. 7. 11. 1951 SCALE 1" = 200'

M 7-40

M 7-40