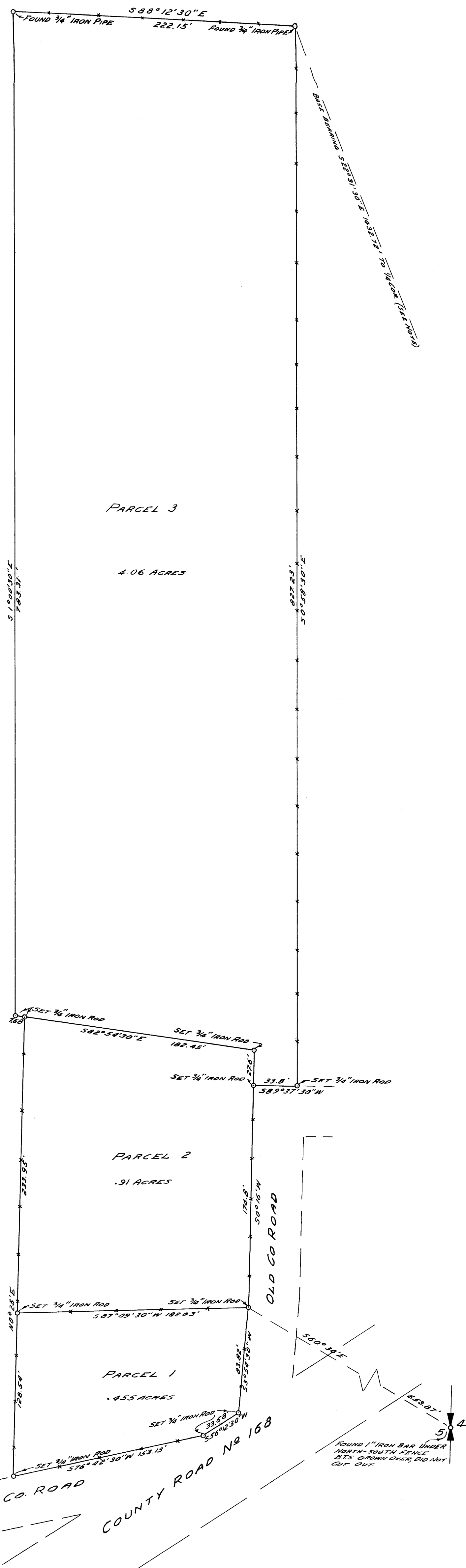




NOTE: BEARINGS ARE BASED ON THE T.B. OF 522°31'30"E FROM THE NORTH EAST CORNER OF PARCEL 3 TO 1/4 CORNER AS DETERMINED BY A SURVEY MADE IN 1927, C.S. FILE 37/98 WHICH IS BASED ON SOLAR OBSERVATION.



COUNTY SURVEYOR'S OFFICE
DOUGLAS COUNTY, OREGON

SURVEY FOR DEED DESCRIPTION
SECTION 5, T25S, R5W, W.M.

BEN B. IRVING COUNTY SURVEYOR
SURVEYED JULY, 1955 BY
JAMES W. BYRON - DEPUTY SCALE 1" = 50'
SURVEYED FOR ED. LAMOREAUX

REGISTERED
OREGON
LAND SURVEYOR
James W. Byron
NOV. 6, 1950
JAMES W. BYRON
203

COUNTY SURVEYORS FILE IN
DO NOT REMOVE FROM OFFICE