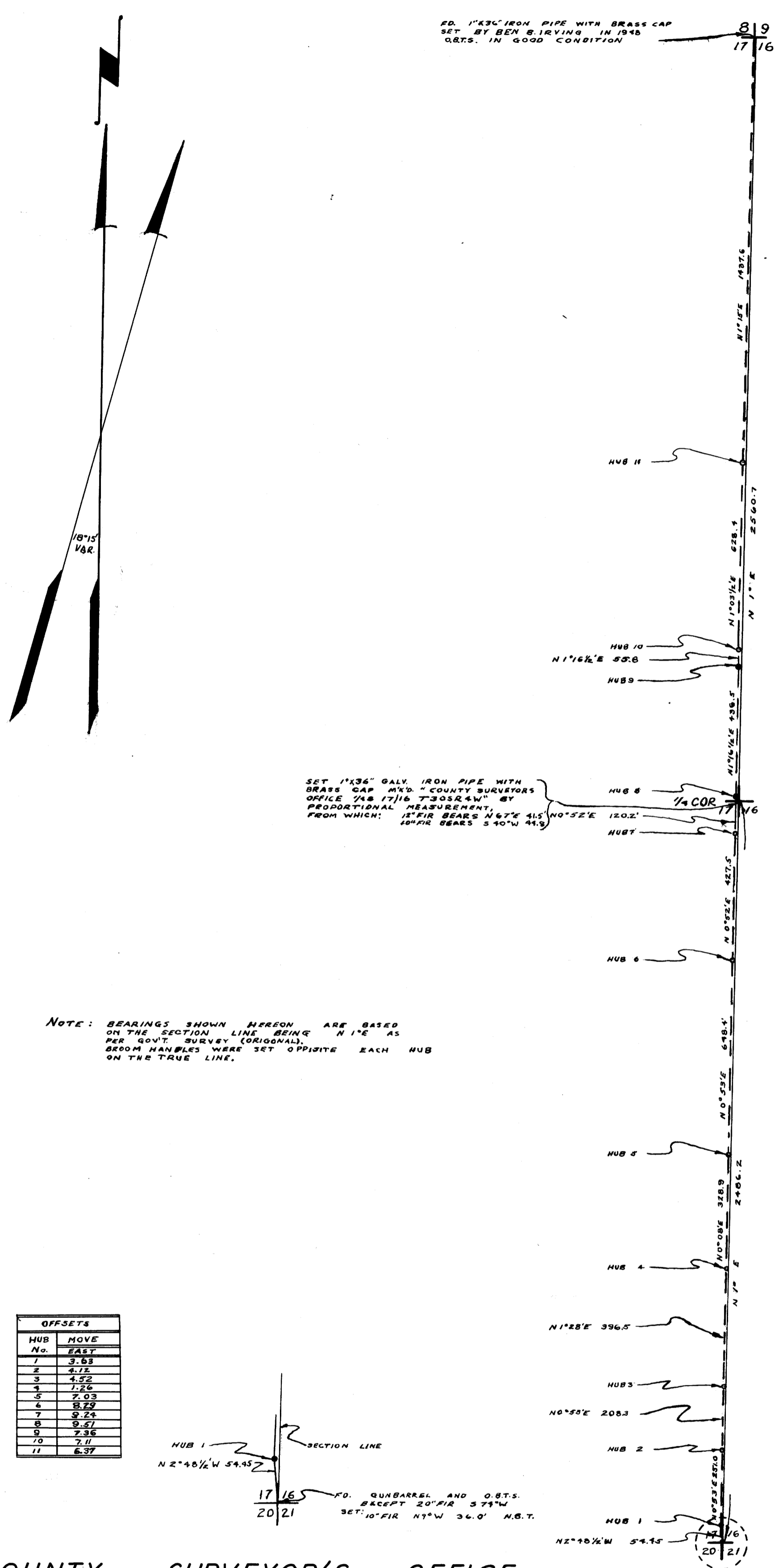


CS. 48/83



OFFSETS	
HUB No.	MOVE EAST
1	3.83
2	4.12
3	4.52
4	1.26
5	7.03
6	8.79
7	9.24
8	9.57
9	7.36
10	7.11
11	6.37

COUNTY SURVEYOR'S OFFICE
DOUGLAS COUNTY, OREGON

SURVEY TO ESTABLISH LINE
BETWEEN SECTION 16 & 17 T30S,R4W,W.M.

BEN B. IRVING COUNTY SURVEYOR
SURVEYED JAN. 17, 1955 BY
JAMES W. BYRON - DEPUTY SCALE 1" = 300'
SURVEYED FOR G. NEUNER, E. SUMNER & A. ROWE

COUNTY SURVEYORS FILE DATA
DO NOT REMOVE FROM OFFICE

REGISTERED
OREGON
LAND SURVEYOR

James W. Byron
NOV. 6, 1953
JAMES W. BYRON
303