

COUNTY SURVEYORS FILE DATE
DO NOT REMOVE FROM OFFICE

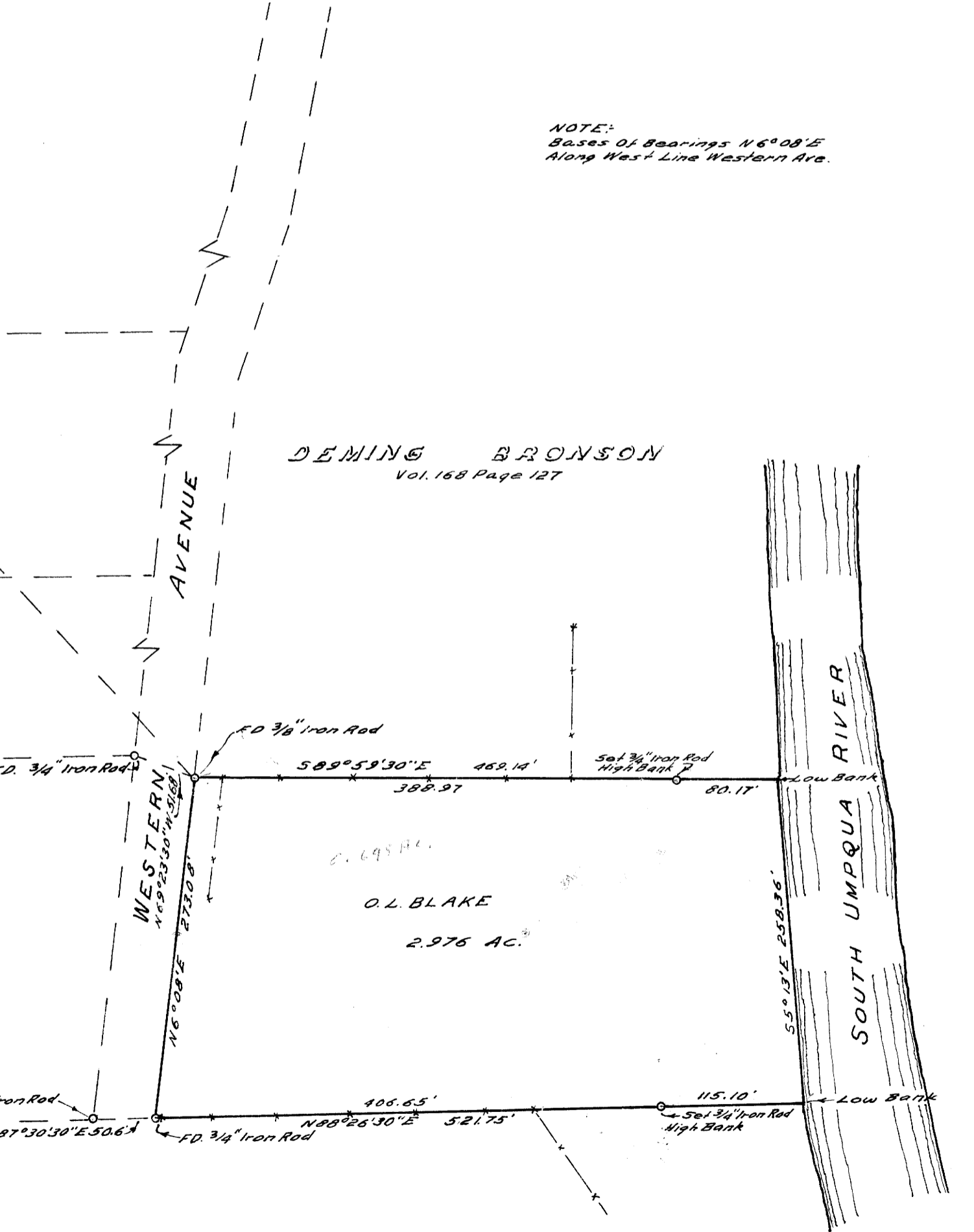
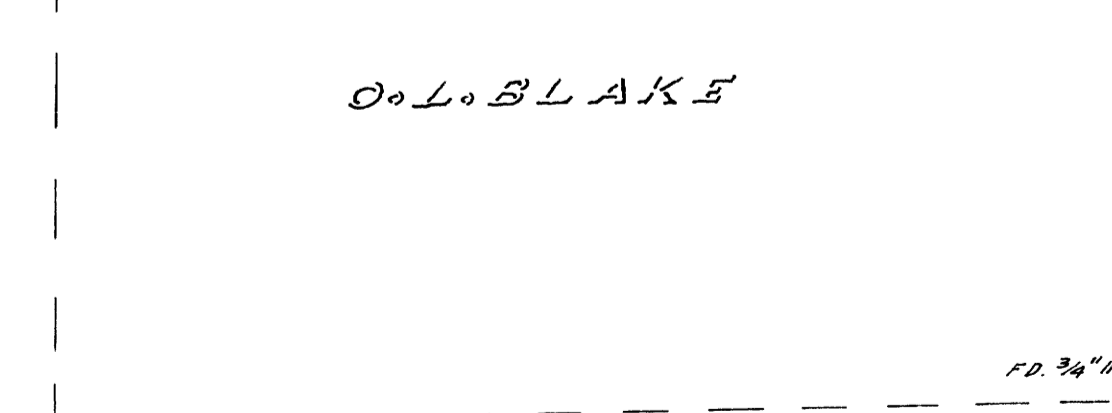
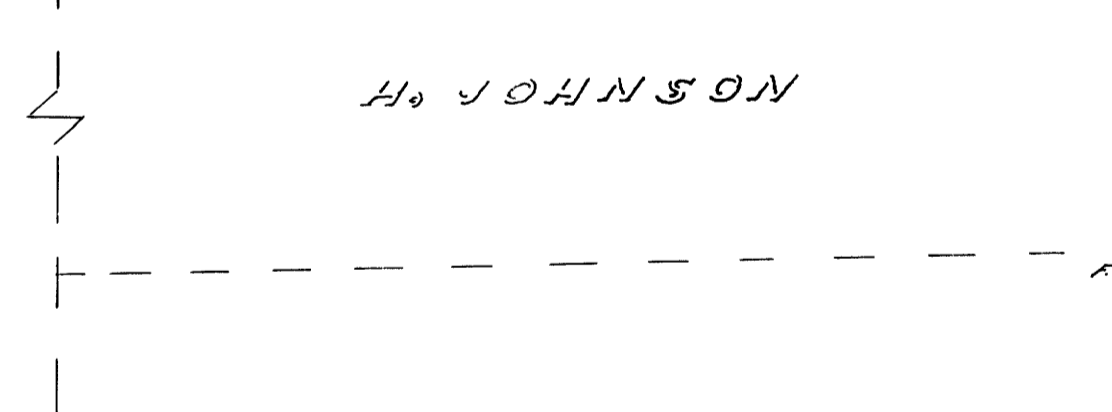
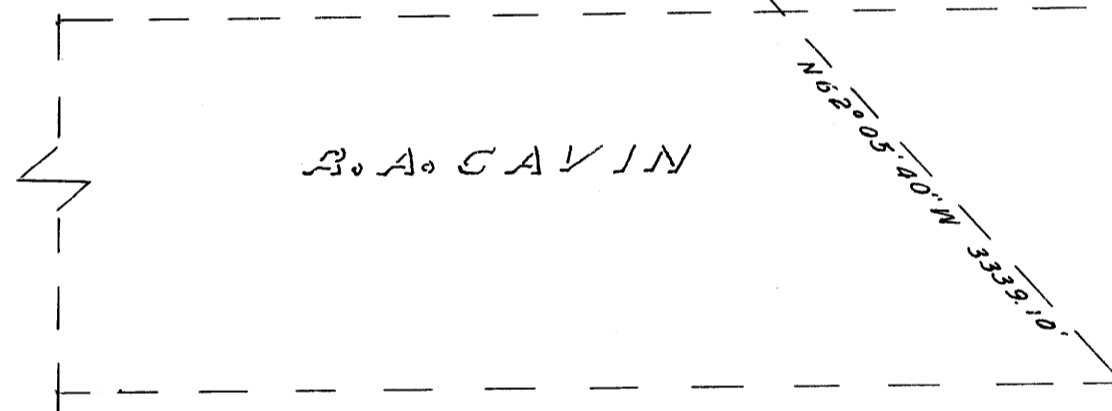
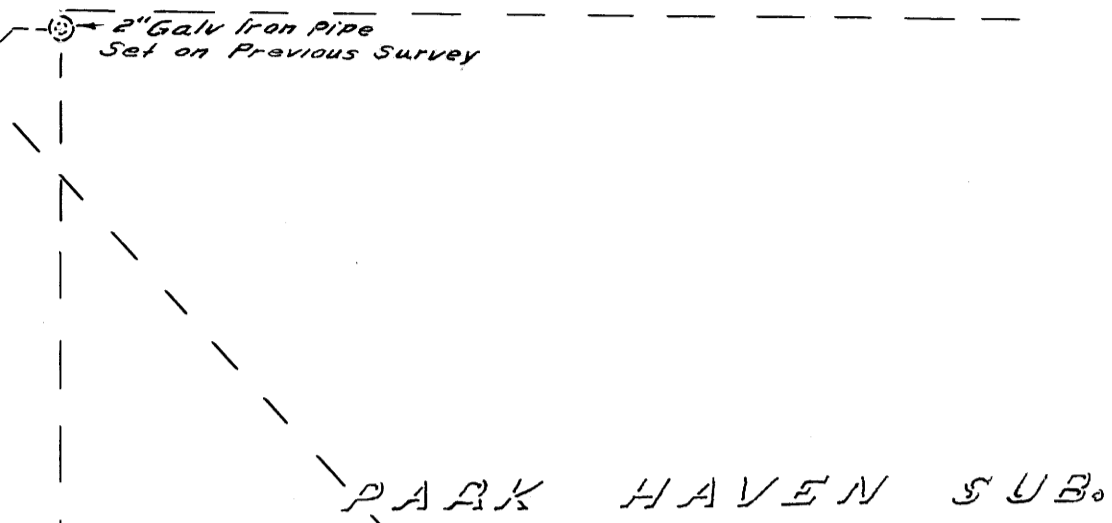
COUNTY SURVEYOR'S OFFICE
DOUGLAS COUNTY, OREGON



SURVEY FOR DEED DESCRIPTION,
SECTION 15, T27S., R6W, W.M.

BEN B. IRVING COUNTY SURVEYOR
SURVEYED JULY, 1955 SCALE 1" = 100'
SURVEYED FOR EMMA BRIGGS

16 589°14'E 2258.65
15 2" Galv Iron Pipe
Set on Previous Survey



NOTE:
Bases of Bearings N6°08'E
Along West Line Western Ave.



DEMING BRONSON
Vol. 158 Page 127

