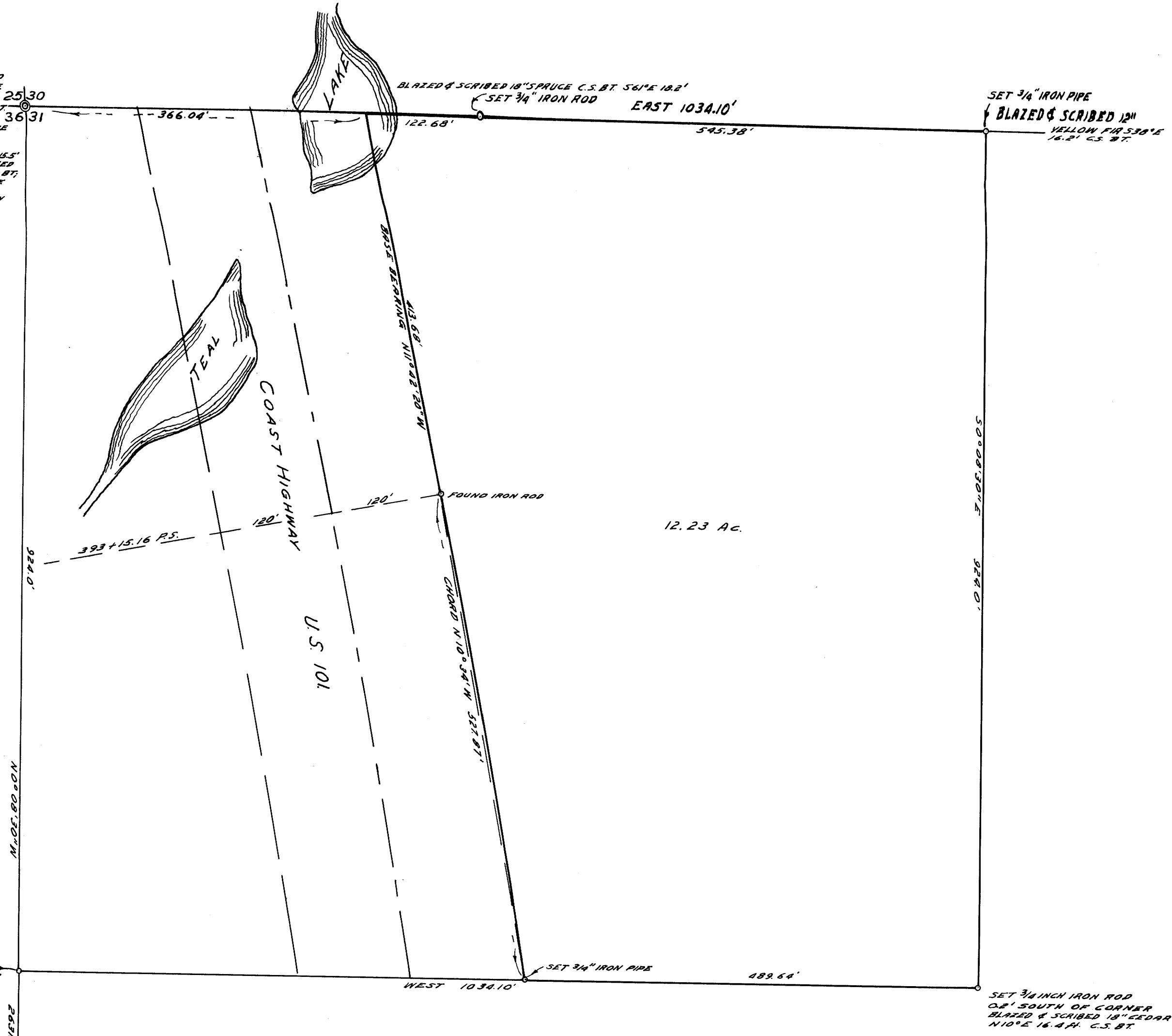


FOUND 1 1/4" AXLE 1' ABOVE GROUND
 8 1/2" PINE BEARS 5 1/2" E 15.7' KNIFE
 SCRIBED 31 8' T; A 12" PINE BEARS
 5 6 1/2" W 33 0' KNIFE SCRIBED 30 8' T
 BOTTOM OF OLD PINE STUMP
 5 5' E 37 6'; 8' BOTTOM OF OLD PINE
 STUMP N 28 1/2' E 5.9' (BOTH TREES
 CHECK FOR ORIGINAL B.T.S.)
 BLAZED & SCRIBED 6" PINE N 10 1/2' W 15.5'
 R 13 W 5 2 1/2' C.S. BT; BLAZED & SCRIBED
 6" PINE S 47 1/2' W 4 1/4' R 13 W 3 3 1/2' C.S. BT;
 BLAZED & SCRIBED 7" PINE S 8 1/2' W 12'
 26.3' R 13 W 5 3 1/2' C.S. BT; BLAZED &
 SCRIBED 7" PINE N 37 1/2' E 23.6' R 13 W
 5 3 0' C.S. BT.



COUNTY SURVEYOR'S OFFICE
 DOUGLAS COUNTY, OREGON

SURVEY FOR DEED DESCRIPTION,
 SECTION 31, T22S, R12W, W.M.

BEN B. IRVING COUNTY SURVEYOR
 SURVEYED MAR. 3, 1955 BY
 JAMES W. BYRON - DEPUTY SCALE 1" = 100'
 SURVEYED FOR A. WEST

NOTE:-
 BASES OF BEARING N 11° 42' 20" W
 FROM HIGHWAY SURVEY.
 0° 38' 50" U.S. USED AS CORRECTION
 FROM MAG. TO TRUE BEARING



REGISTERED
 OREGON
 LAND SURVEYOR

James W. Byron
 NOV. 6, 1950
 JAMES W. BYRON
 303

COUNTY SURVEYORS FILE MAPS
 DO NOT REMOVE FROM OFFICE

FOUND 3/4" X 10' IRON PIPE AT 3' X 3"
 SQ. POST SCRIBED 1/4" COR. ON NORTH
 FACE, 31 ON EAST FACE, 36 ON
 WEST FACE & DL. ON SOUTH FACE