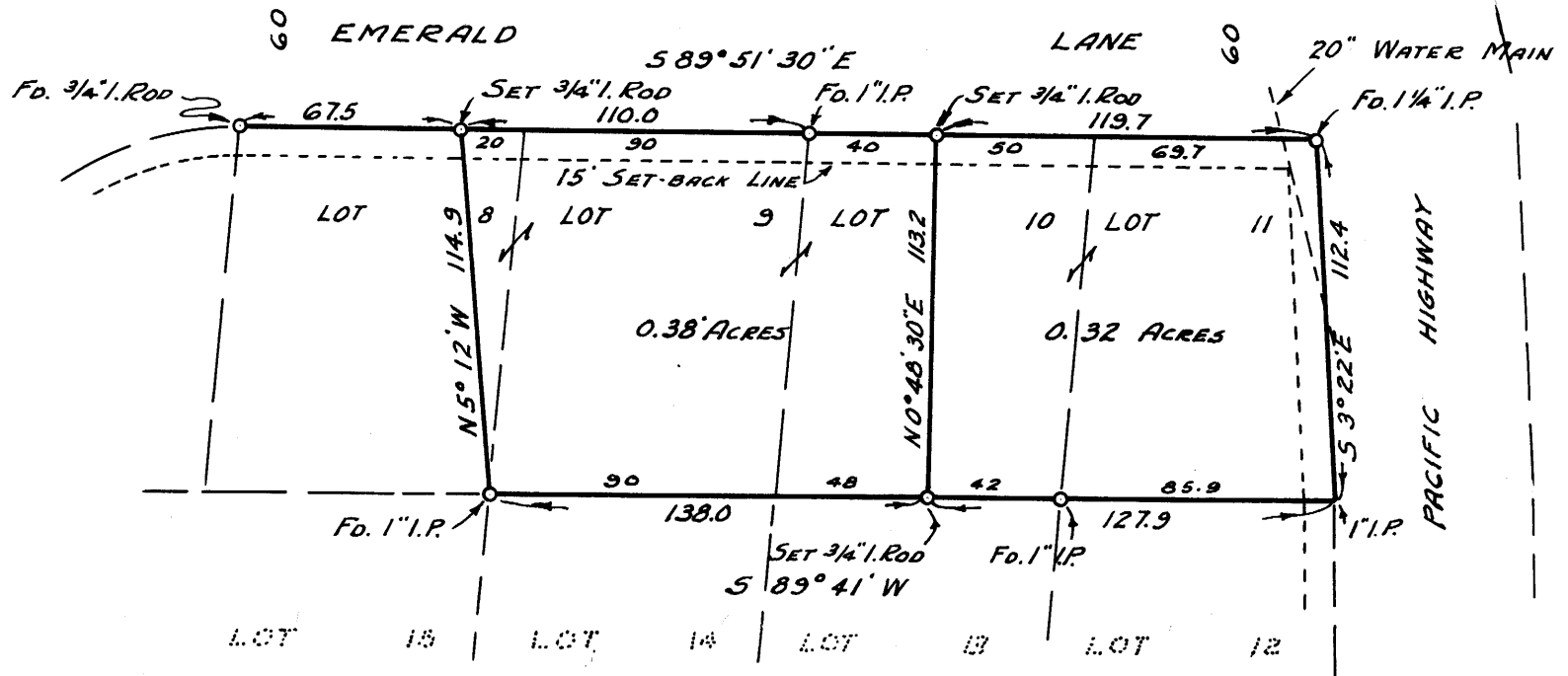


BONNYVIEW



TERRACE

COUNTY SURVEYORS FILE DATA
DO NOT REMOVE FROM OFFICE

COUNTY SURVEYOR'S OFFICE
DOUGLAS COUNTY, OREGON

Sec 12 T 27 R 6

SURVEY FOR DEED DESCRIPTION,
BONNYVIEW TERRACE.

James W. Byron

BEN B. IRVING
SURVEYED NOV. 24, 1954
JAMES W. BYRON - DEPUTY
SURVEYED FOR A.H. WEBER

COUNTY SURVEYOR
BY
SCALE 1" = 60'