

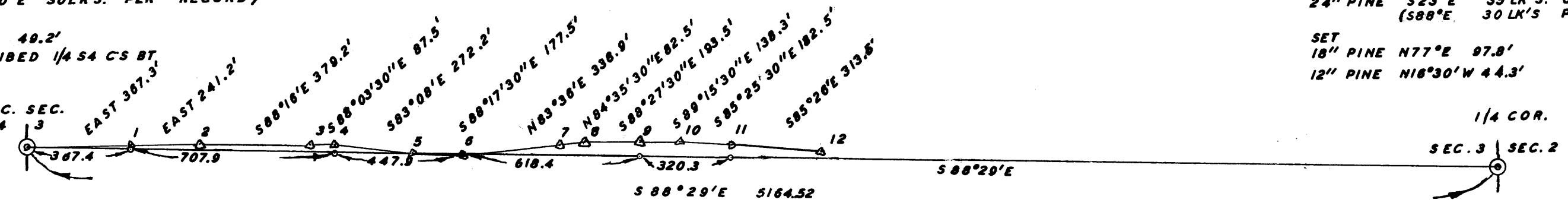
FD. BRASS CAP
8" LAUREL N80°W 11LK'S. DEAD
24" LAUREL S65°E 30LK'S. GOOD CONDITION
(S40°E 30LK'S. PER RECORD)

SET
10" FIR S10°W 49.2'
BLAZED & SCRIBED 1/4 S4 CS BT

FD. ROCK MOUND & OBT
24" PINE S23°E 35LK'S. GOOD CONDITION
(S88°E 30LK'S PER RECORD)

SET
18" PINE N77°E 97.8'
12" PINE N16°30'W 44.3'

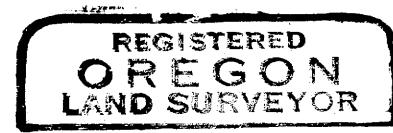
1/4 COR. SEC. SEC.



OFFSETS		
HUB NO.	MOVE	
	NORTH	SOUTH
1		8.78
2		18.17
3		14.77
4		14.13
5	11.23	
6	11.80	
7		34.93
8		44.89
9		44.82
10		48.70
11		38.88
12		20.32

COUNTY SURVEYOR'S OFFICE DOUGLAS COUNTY, OREGON

SURVEY OF EAST & WEST CENTERLINE SECTION 3, T.31S., R.7W., WM.,



SURVEYED FOR R. M. KING

BEN B. IRVING COUNTY SURVEY DEPUTY
J. W. BYRON

SCALE 1" = 400'

o DENOTES 3/4" IRON RODS

COUNTY SURVEYORS FILE DATA
DO NOT REMOVE FROM OFFICE

