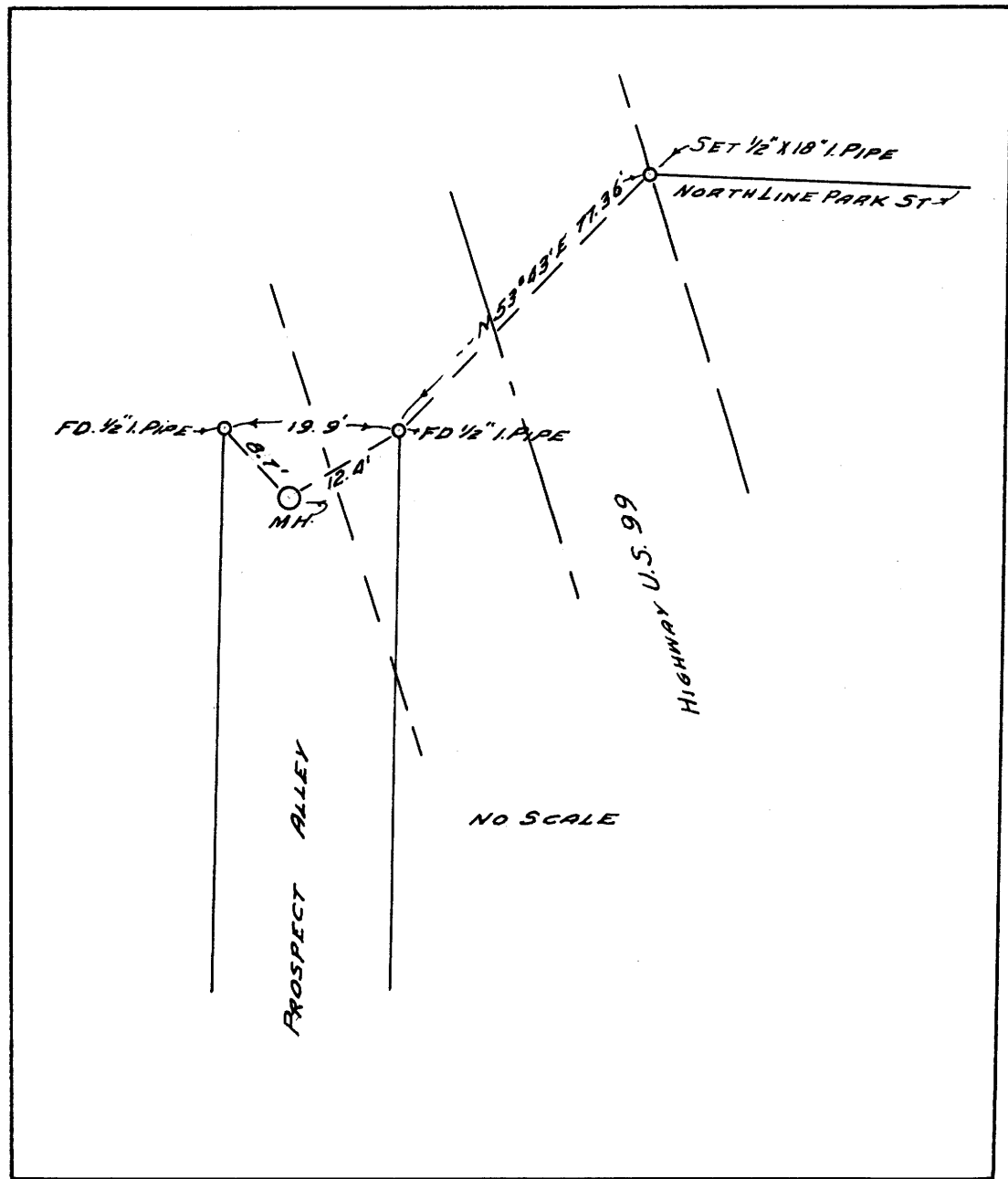
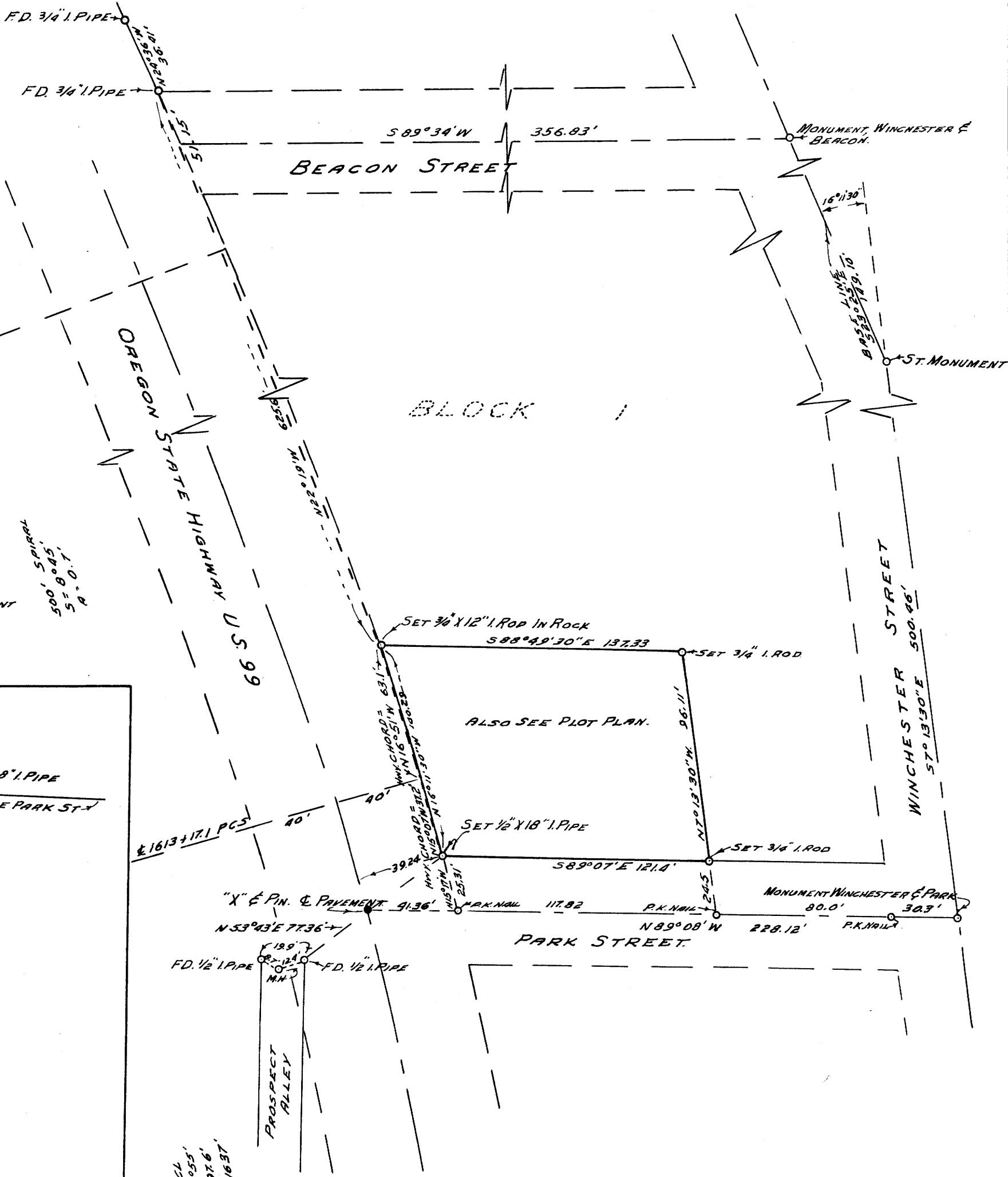


NOTE: - BASE BEARING S23°25'E FROM THE MONUMENT AT WINCHESTER & BEACON TO ST. MONUMENT IN WINCHESTER.



COUNTY SURVEYOR'S OFFICE
DOUGLAS COUNTY OREGON

SURVEY OF CHESTER HAMM PROPERTY
IN LOTS 1, 2, 13 & 14, BLOCK 1, NORTH
PARK ADDITION, ROSEBURG, OREGON

BEN B. IRVING
SURVEYED AUG. 24, 1954

COUNTY SURVEYOR
COUNTY SURVEYORS FILE DATA
DO NOT REMOVE FROM OFFICE



S 18 T 27 R 5