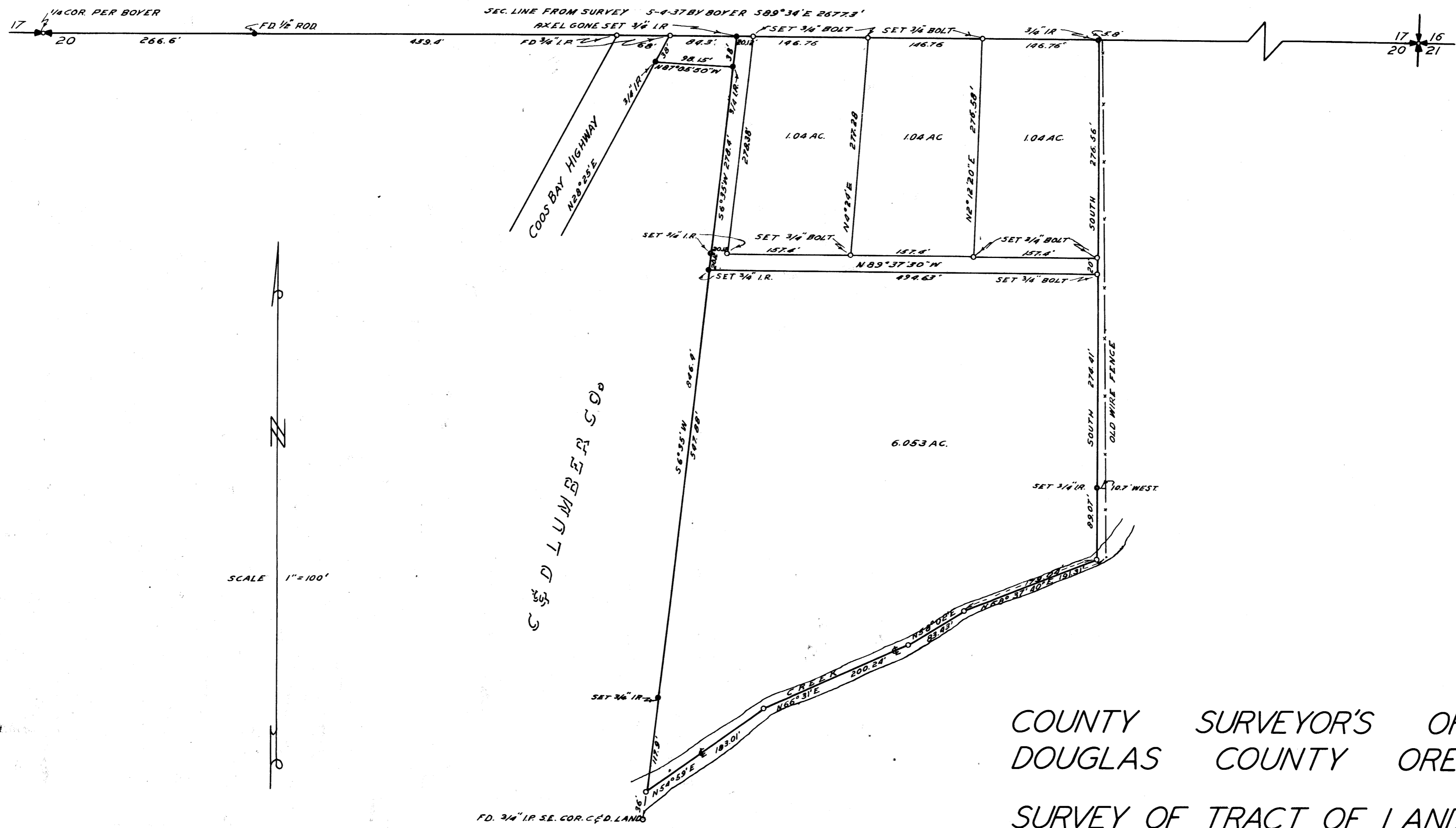


NOTE  
BASIS OF BEARINGS NORTH LINE SEC. 20  
AS SHOWN BY BOYER'S SURVEY, S-4-37  
C.S. FILE NR. 46/22



COUNTY SURVEYOR'S OFFICE  
DOUGLAS COUNTY OREGON

SURVEY OF TRACT OF LAND IN  
NE  $\frac{1}{4}$  SECTION 20, T. 29 S., R. 8 W., W. M.

FOR—LLOYD T. NELSEN

BEN B. IRVING COUNTY SURVEYOR  
SURVEYED MAY 6 27 1954 BY J. W. BYRON, DEPUTY

COUNTY SURVEYORS FILE DATA  
DO NOT REMOVE FROM OFFICE

REGISTERED  
OREGON  
LAND SURVEYOR

James W. Byron  
J.W. BYRON  
803