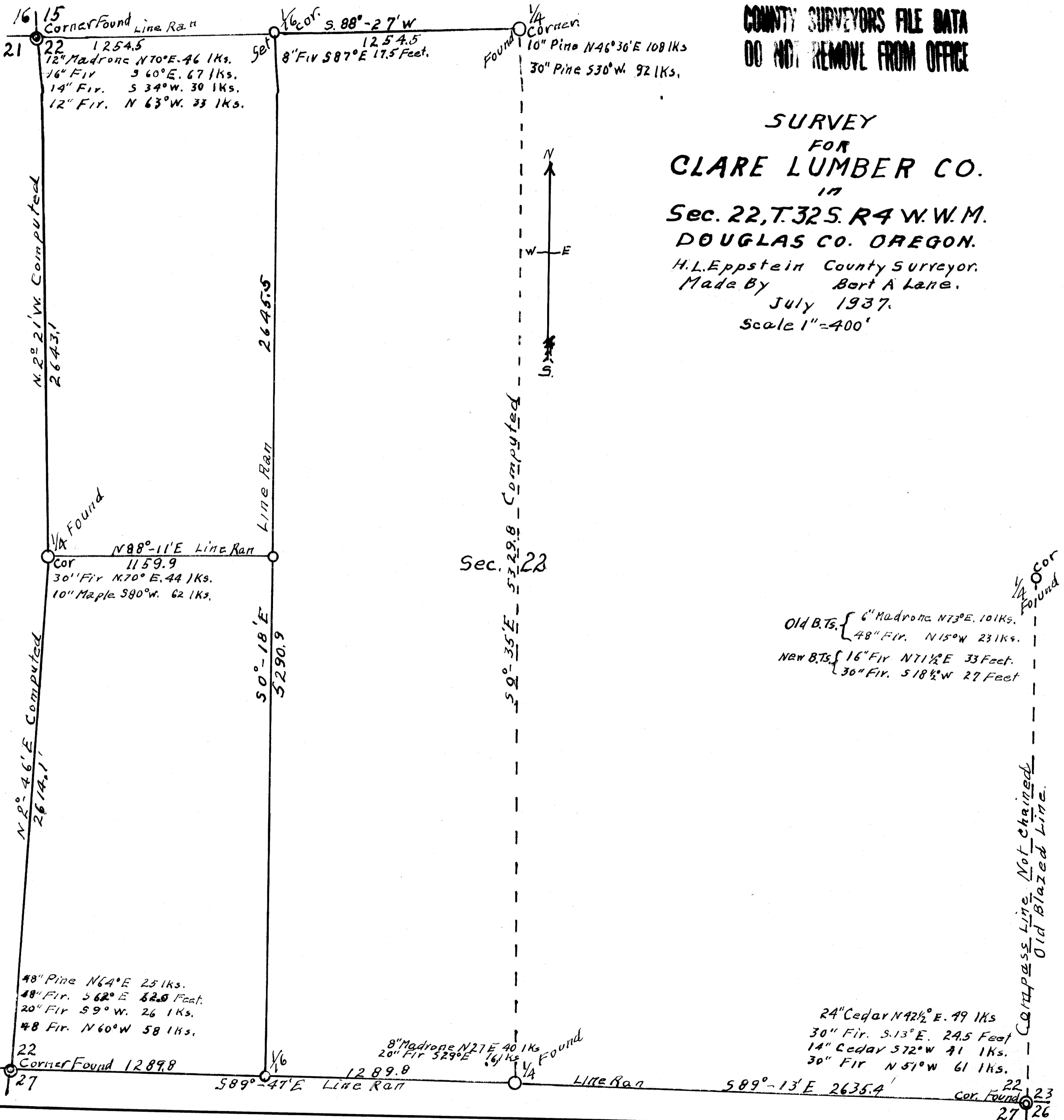


COUNTY SURVEYORS FILE DATA  
DO NOT REMOVE FROM OFFICE

SURVEY  
FOR  
CLARE LUMBER CO.  
17  
Sec. 22, T. 32 S. R. 4 W. W. M.  
DOUGLAS CO. OREGON.  
H. L. Epstein County Surveyor.  
Made By Bert A. Lane.  
July 1937.  
Scale 1" = 400'



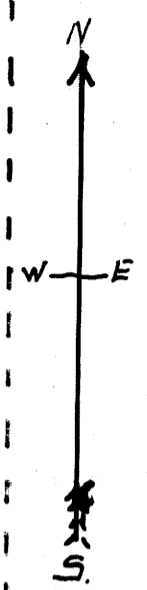
16 15  
Corner Found Line Ran  
21 22 1254.5  
12" Madrone N70°E. 46 1Ks.  
16" Fir S 60°E. 67 1Ks.  
14" Fir S 34°W. 30 1Ks.  
12" Fir N 63°W. 33 1Ks.

1/6 cor. S. 88°-27'W  
1254.5  
8" Fir S 87°E 17.5 Feet.

Found 1/4 Corner  
10" Pine N46°30'E 108 1Ks  
30" Pine S30°W. 92 1Ks.

N 22° 21' W Computed  
2643.1

2645.5



Sec. 22  
529.8 - Computed  
59°-35'E

1/4 Found  
N 88°-11'E Line Ran  
Cor 1159.9  
30" Fir N70°E. 44 1Ks.  
10" Maple S 80°W. 62 1Ks.

Line Ran

50°-18'E  
5290.9

N 2° 46' E Computed  
2614.1

Old B.Ts. { 6" Madrone N73°E. 101Ks.  
48" Fir. N15°W 231Ks.  
New B.Ts. { 16" Fir N71 1/2°E 33 Feet.  
36" Fir. S18 1/2°W 27 Feet

48" Pine N64°E 25 1Ks.  
48" Fir. S 62°E 32.0 Feet.  
20" Fir S 9°W. 26 1Ks.  
48" Fir. N 60°W 58 1Ks.

8" Madrone N27°E 40 1Ks Found  
20" Fir S29°E 16 1Ks

21 22  
Corner Found 1289.8  
28 27

1289.8  
589°-47'E Line Ran

Line Ran

589°-13'E 2635.4

24" Cedar N42 1/2°E. 49 1Ks  
30" Fir. S. 13°E. 24.5 Feet  
14" Cedar S72°W 41 1Ks.  
30" Fir N 51°W 61 1Ks.

1/4 Cor Found  
Compass Line Not chained  
Old Blazed Line.

22 23  
Cor. Found  
27 26