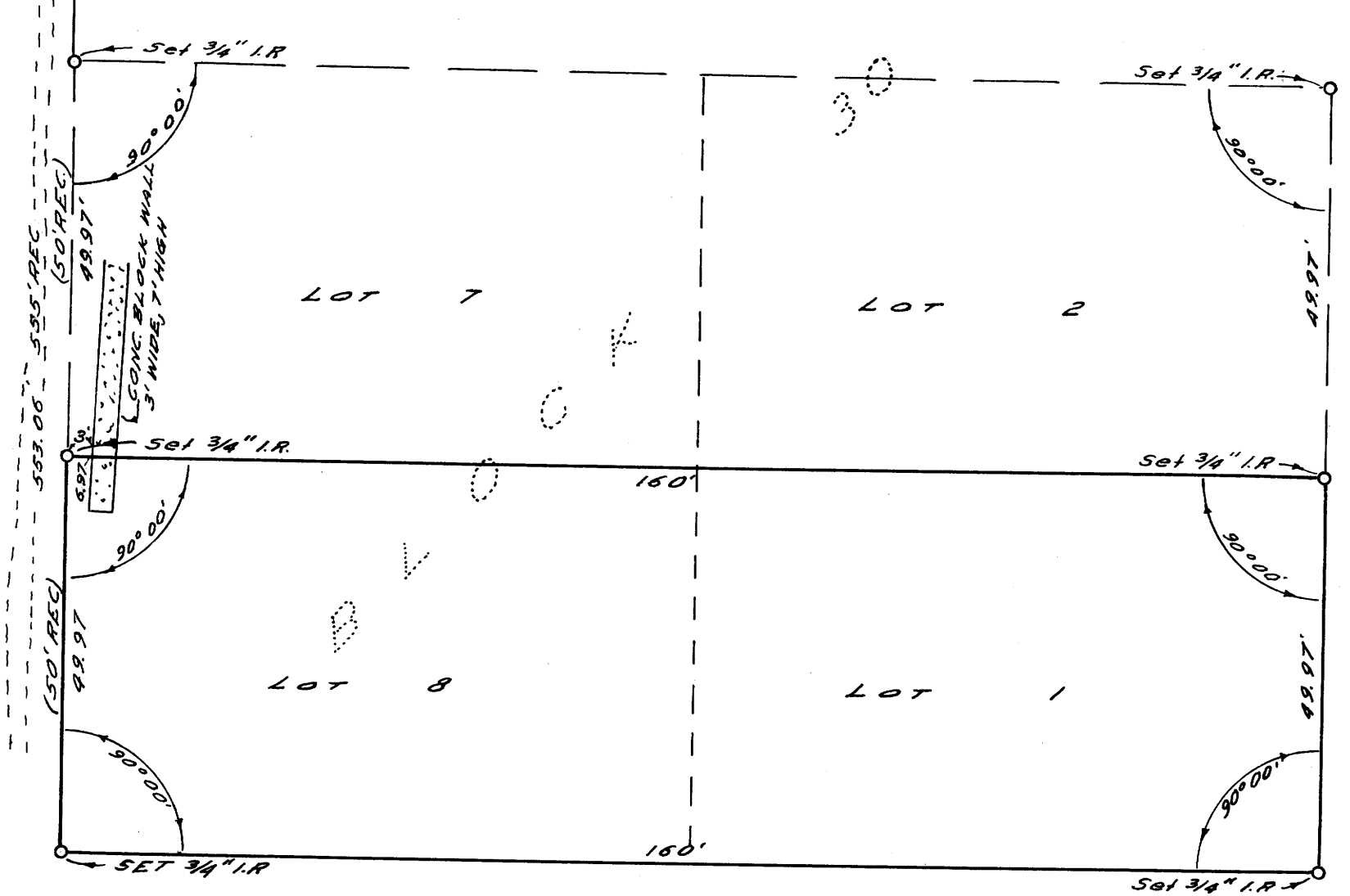


Fd. 3/4" I.R.
CENTER LINE
INTERSECTION OF
PLATEAU & SECOND STS.

PLATEAU STREET

NOTE:
Bases of Survey Along East
Line of Second Street.

SECOND STREET



CAMP STREET

COUNTY SURVEYOR'S OFFICE
DOUGLAS COUNTY, OREGON

SURVEY TO ESTABLISH LOT CORNERS
LOTS 1 & 8, BLOCK 30, REED'S 1ST
ADDITION TO GARDINER

FRED M. DARBY COUNTY SURVEYOR
SURVEYED FEB. 7, 1956 BY
JAMES W. BYRON - DEPUTY SCALE 1" = 20'
SURVEYED FOR O. H. HINSDALE

Fred M. Darby
COUNTY SURVEYOR

COUNTY SURVEYORS FILE DATA
DO NOT REMOVE FROM OFFICE

385.44'
HIGH STREET

FRONT ST.

Fd. Brass Cap Flagstaff Cor. At S.E. Cor. Blk. 22