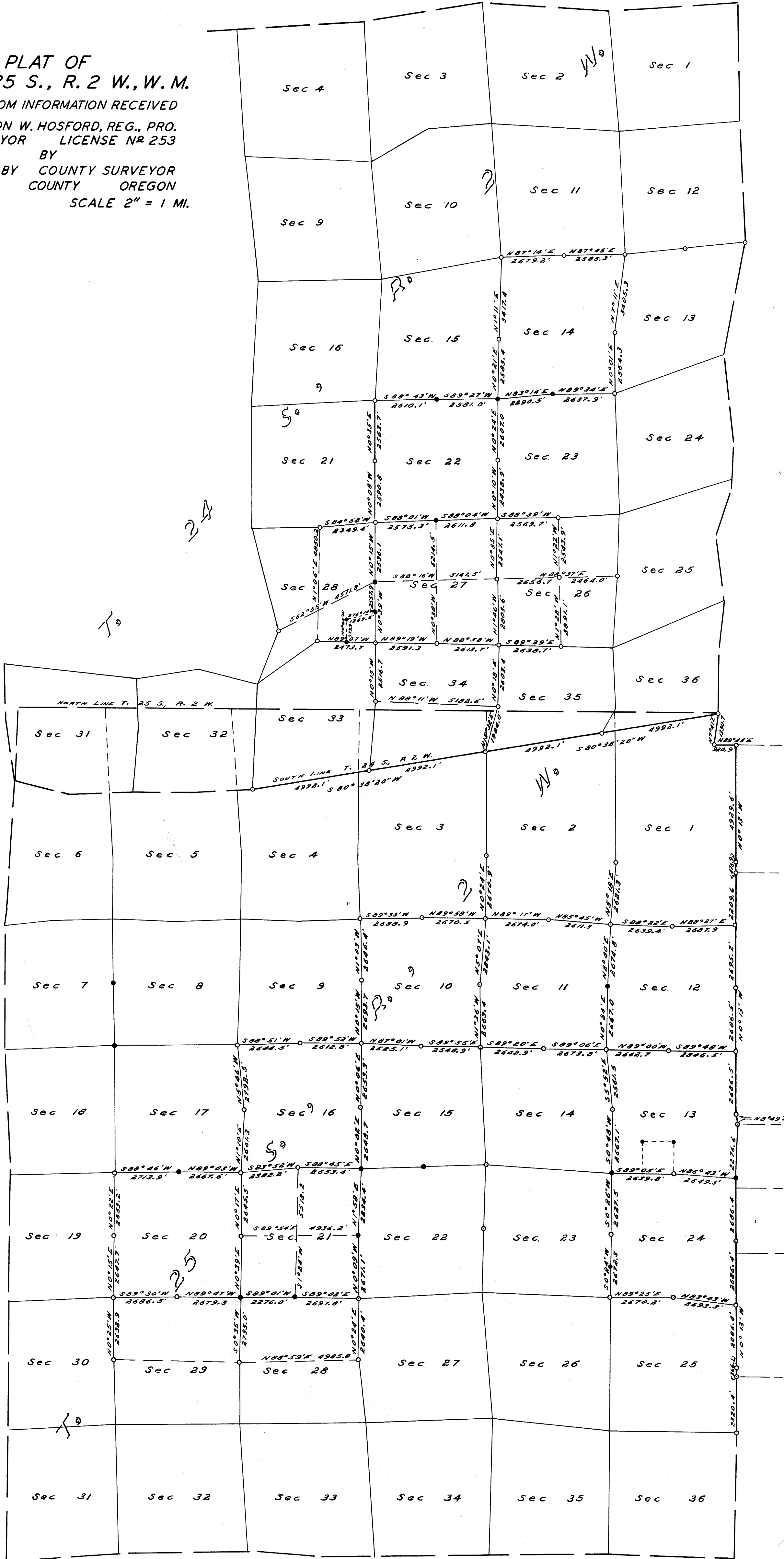


PLAT OF  
T. 24 & 25 S., R. 2 W., W.M.  
COMPILED FROM INFORMATION RECEIVED  
FROM VERNON W. HOSFORD, REG., PRO.  
LAND SURVEYOR LICENSE NO. 253  
BY  
FRED M. DARBY COUNTY SURVEYOR  
DOUGLAS COUNTY OREGON  
DEC. 23, 1957 SCALE 2" = 1 MI.



● = CORNERS FOUND & RENEWED  
○ = CORNERS FOUND

CS FILE FOLDER

CONTAINS

MORE

INFORMATION