

COUNTY SURVEYORS FILE DATA
DO NOT REMOVE FROM OFFICE

16 15
21 22

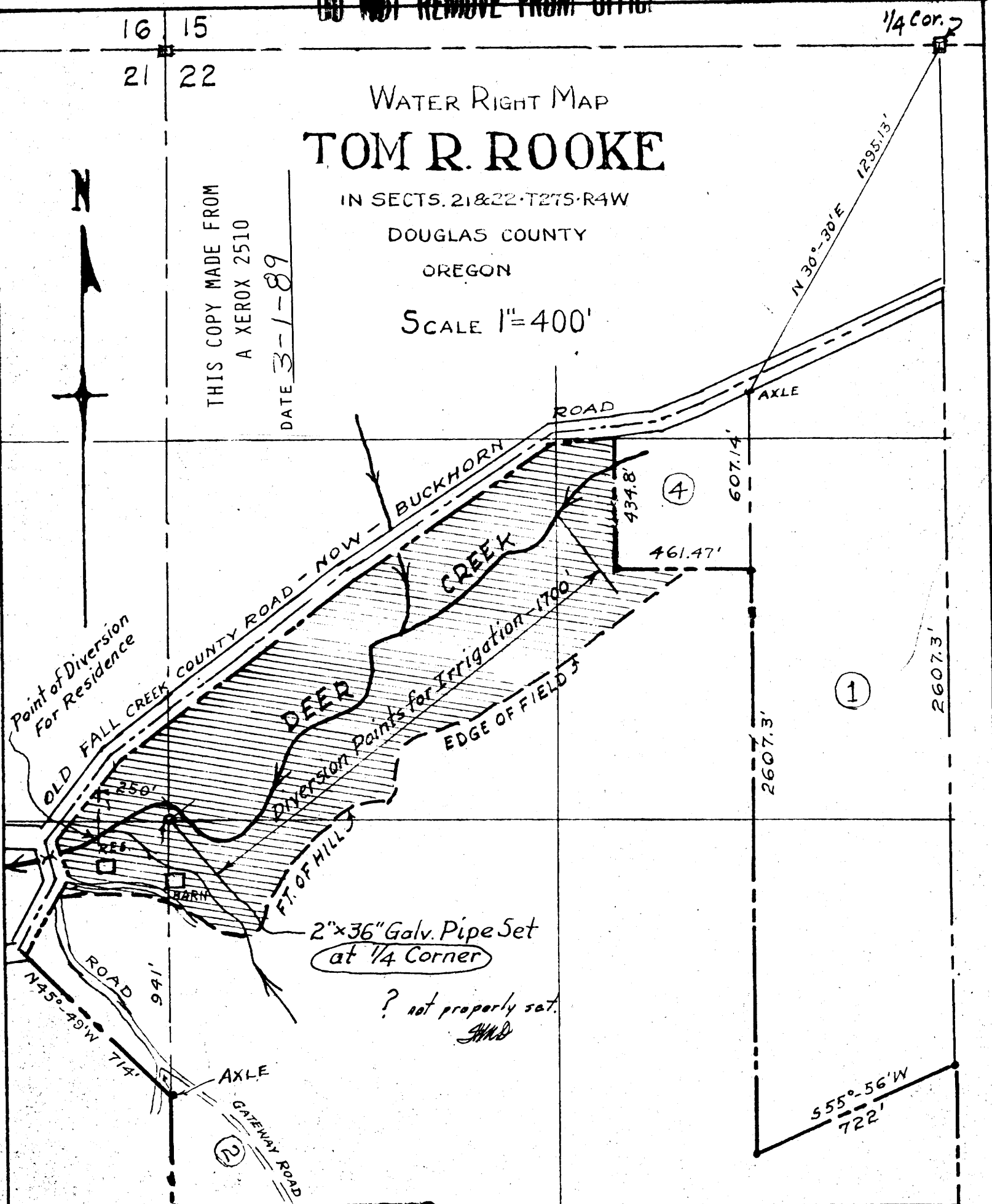
1/4 Cor. 2

WATER RIGHT MAP TOM R. ROOKE

IN SECTS. 21 & 22 - T27S - R4W
DOUGLAS COUNTY
OREGON

SCALE 1" = 400'

THIS COPY MADE FROM
A XEROX 2510
DATE 3-1-89



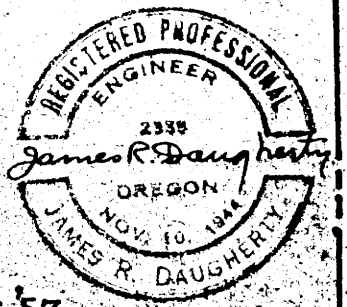
2" x 36" Galv. Pipe Set
at 1/4 Corner

? not properly set.
JMD

I, James R. Daugherty, of Roseburg, Ore.,
do hereby certify that this map was made from
notes taken during an actual survey made by me
on Dec. 13, 1957.

James R. Daugherty

SURVEYED & PLATTED
JAMES R. DAUGHERTY
CIVIL - SANITARY ENGR.
ROSEBURG - ORE.



21 22
28 27

742.5'

FILED
RECEIVED

Dec. 16, 57

1/4 Cor. 2

DEC 17 1957

COUNTY SURVEYOR
DOUGLAS COUNTY, ORE.