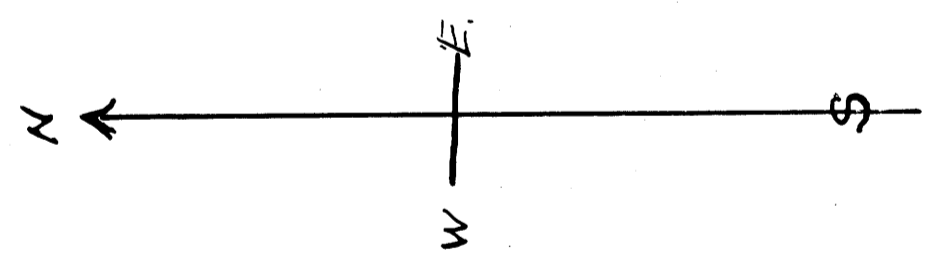
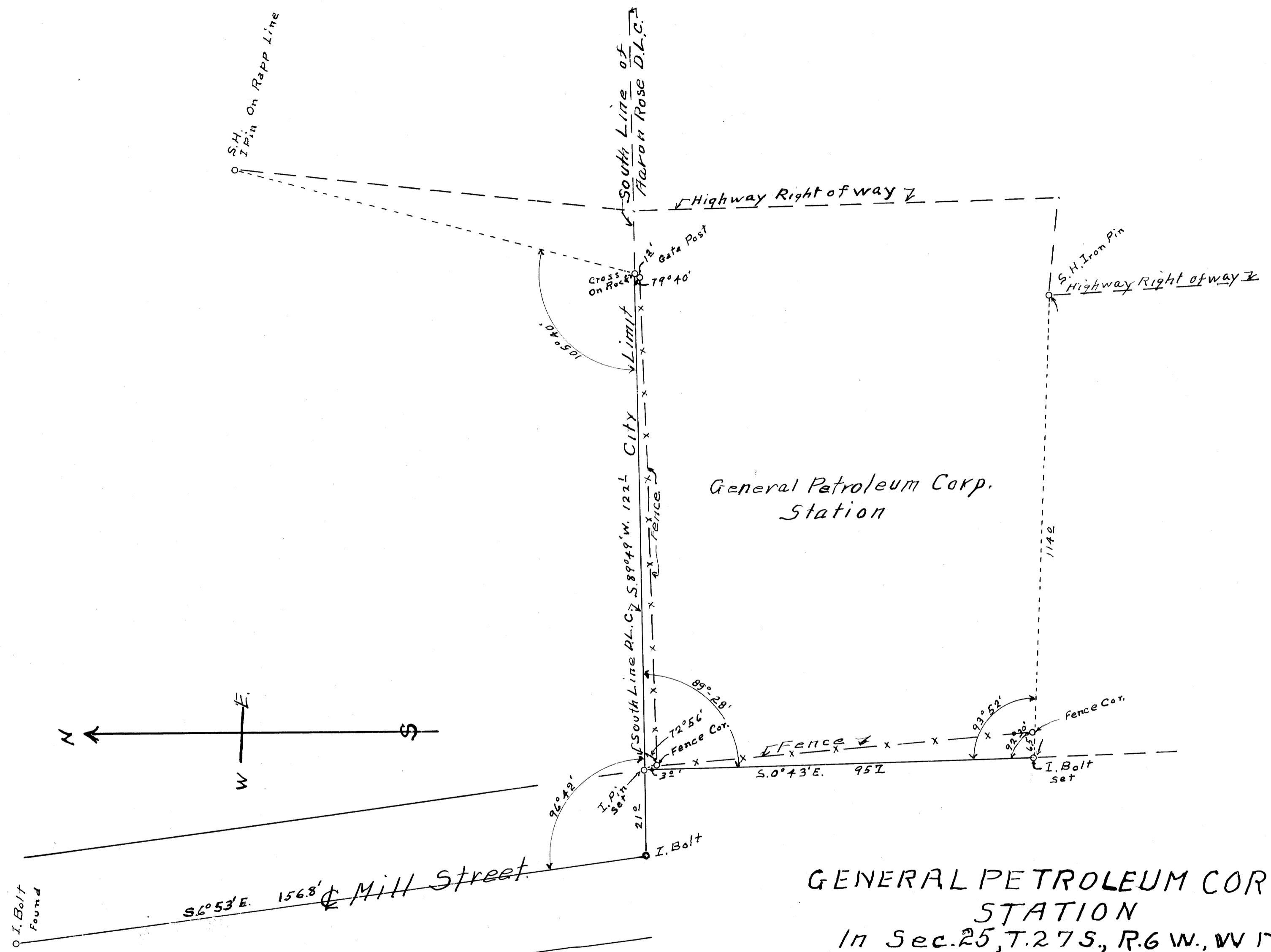


M6-38
V.21E.25



GENERAL PETROLEUM CORP.
STATION
In Sec. 25, T. 27 S., R. 6 W., W. 1 M.
Douglas County, Ore.
H. L. Eppstein Co. Surveyor.
Oct. 29, 1939.
Scale 1" = 20'

M6-38
V.21E.25

COUNTY SURVEYORS FILE DATA
DO NOT REMOVE FROM OFFICE