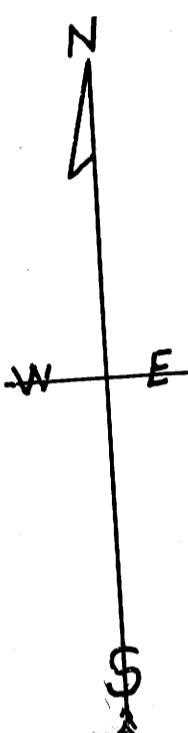


COUNTY SURVEYORS FILE DATA  
DO NOT REMOVE FROM OFFICE

MAP  
FOR  
THE INTERSTATE TRACTOR & EQUIPMENT CO.  
of  
PORTLAND, OREGON.  
IN  
BLOCK 7 KINNEY'S IMPROVED PLAT.  
ROSEBURG, OREGON  
Office of H. L. Epstein Co. Sur. Feb. 16<sup>th</sup> 1944.

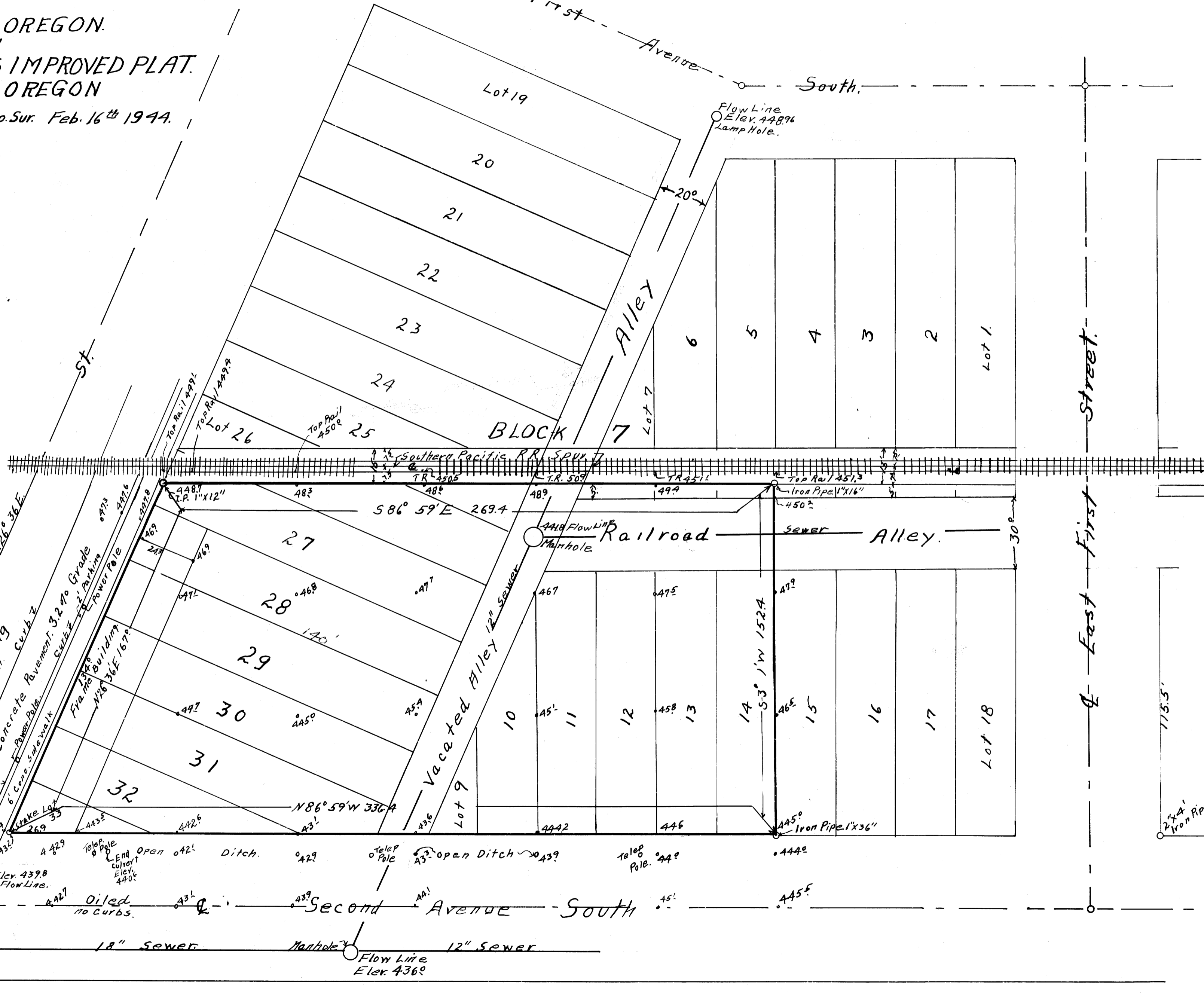


Scale 1 inch = 30' Feet.

St Monument

First Avenue South

Jackson - N26°36'E  
Parking  
Concrete Pavement 3.2% Grade  
6' Conc. Sidewalk  
Fire hydrant Building  
N26°36'E 167.9'



V. 32 E 25  
M 6-32

OS 32/25  
M 6-32