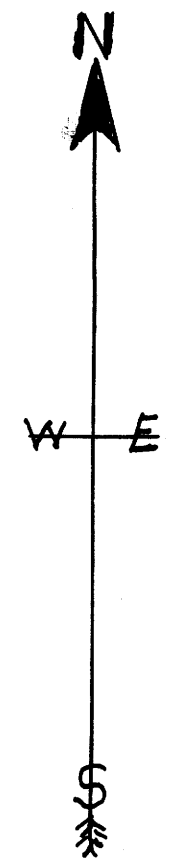
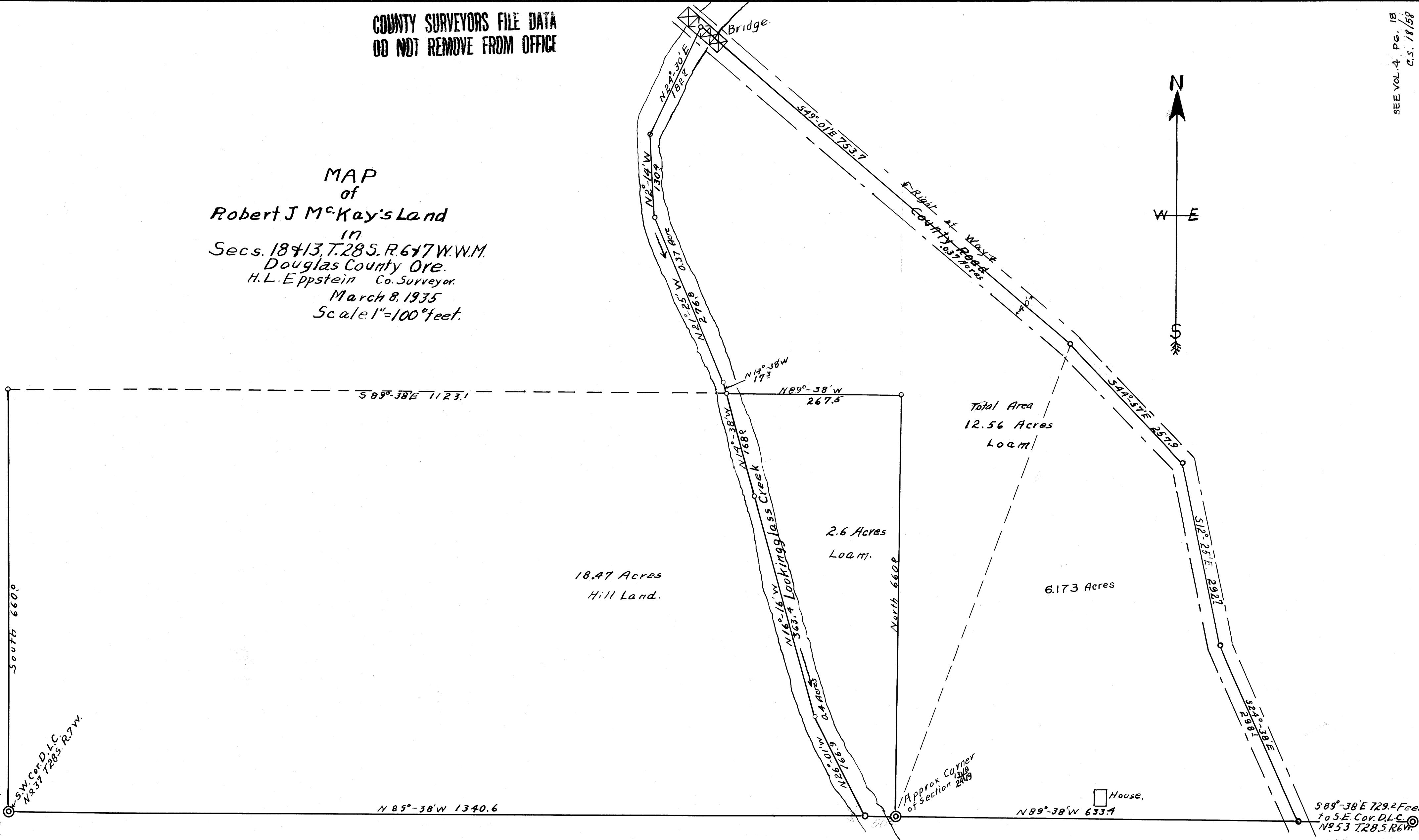


COUNTY SURVEYORS FILE DATA  
DO NOT REMOVE FROM OFFICE

SEE VOL. 4 PG. 18  
C.S. 18158  
M. 6-31

MAP  
of  
Robert J McKay's Land  
in  
Secs. 18 & 13, T. 28 S., R. 6 & 7 W., W.M.  
Douglas County Ore.  
H. L. Eppstein Co. Surveyor.  
March 8, 1935  
Scale 1" = 100' feet.



MAP FILE M. 6-31  
V. 18 E. 58

Drawer 58