

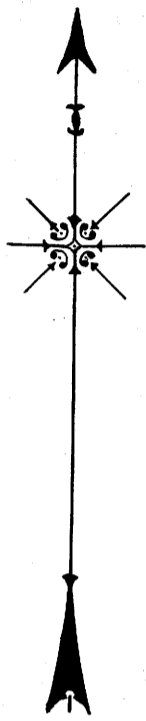
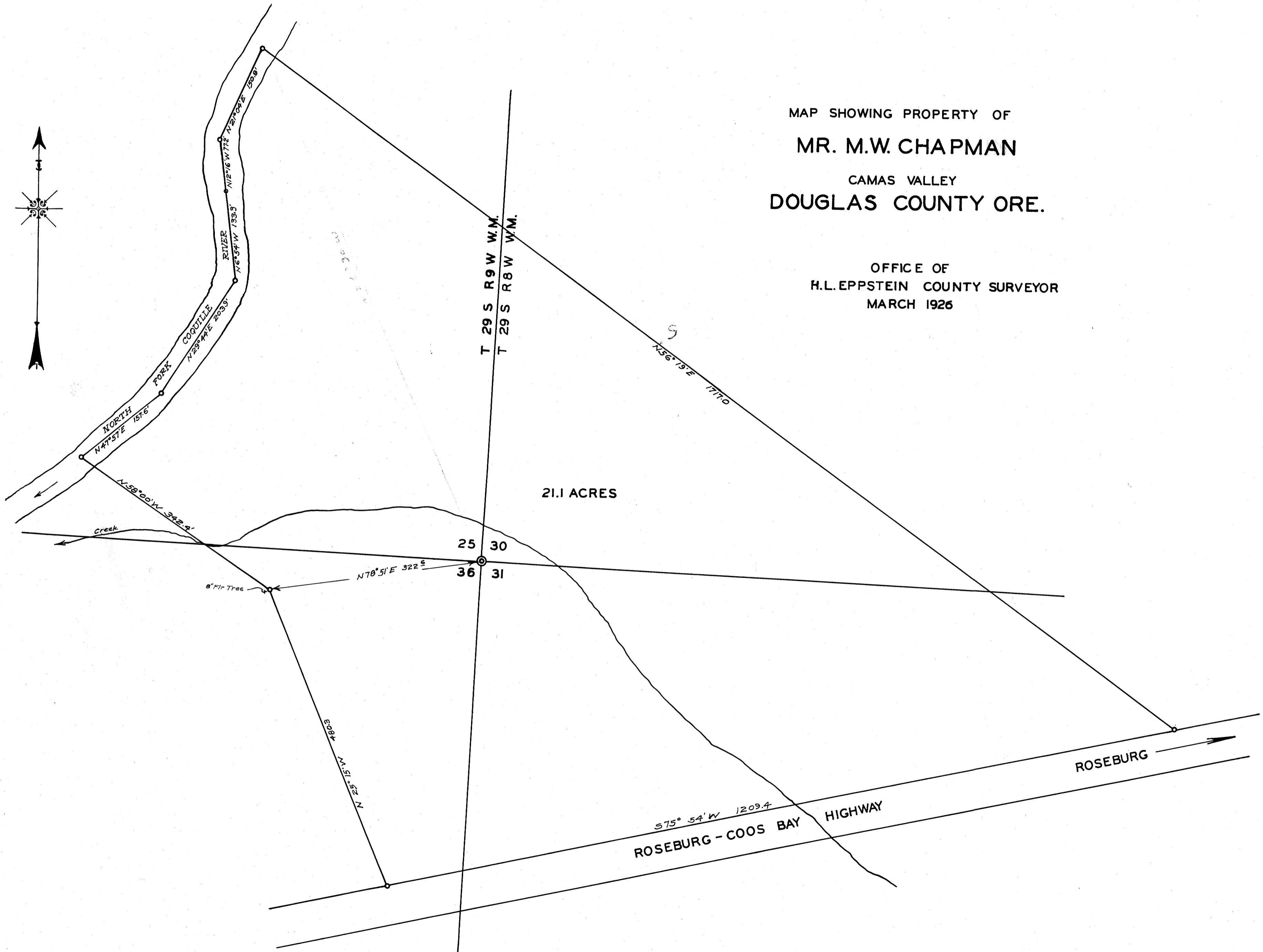
COUNTY SURVEYORS FILE DATA
DO NOT REMOVE FROM OFFICE

M 6-29
C.S. FILE NO. 3/41
MAP FILE M 6-29

MAP SHOWING PROPERTY OF
MR. M.W. CHAPMAN
CAMAS VALLEY
DOUGLAS COUNTY ORE.

OFFICE OF
H.L. EPPSTEIN COUNTY SURVEYOR
MARCH 1926

21.1 ACRES



C.S. FILE NO. 3/41
M 6-29
Drawn Mrs. Bowker. File 3-40