

MAP OF

R. B. MONTGOMERY'S RANCH

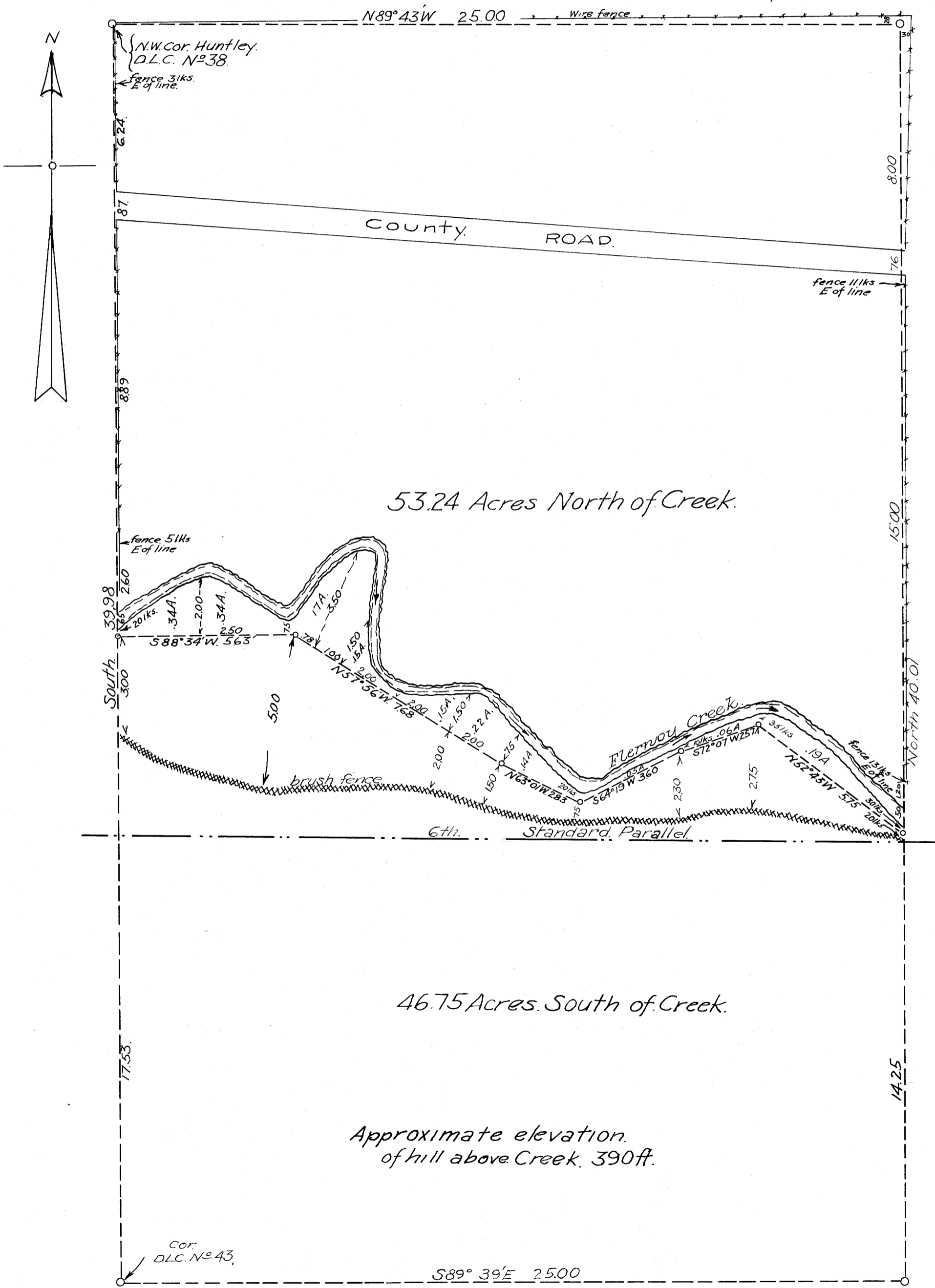
LOCATED IN T. 27 and 28 S. R. 7 W. Secs. 33-34-3-4.

Showing Areas of Portions N. and S. of Flerroy Creek.

Jan 1915

Scale 1 in = 3 Chns.

Surveyed by F. J. Cole.
Platted by J. W. Cole.



Approximate elevation
of hill above Creek. 390 ft.