

STEPHEN R. MILLER

ESTATE

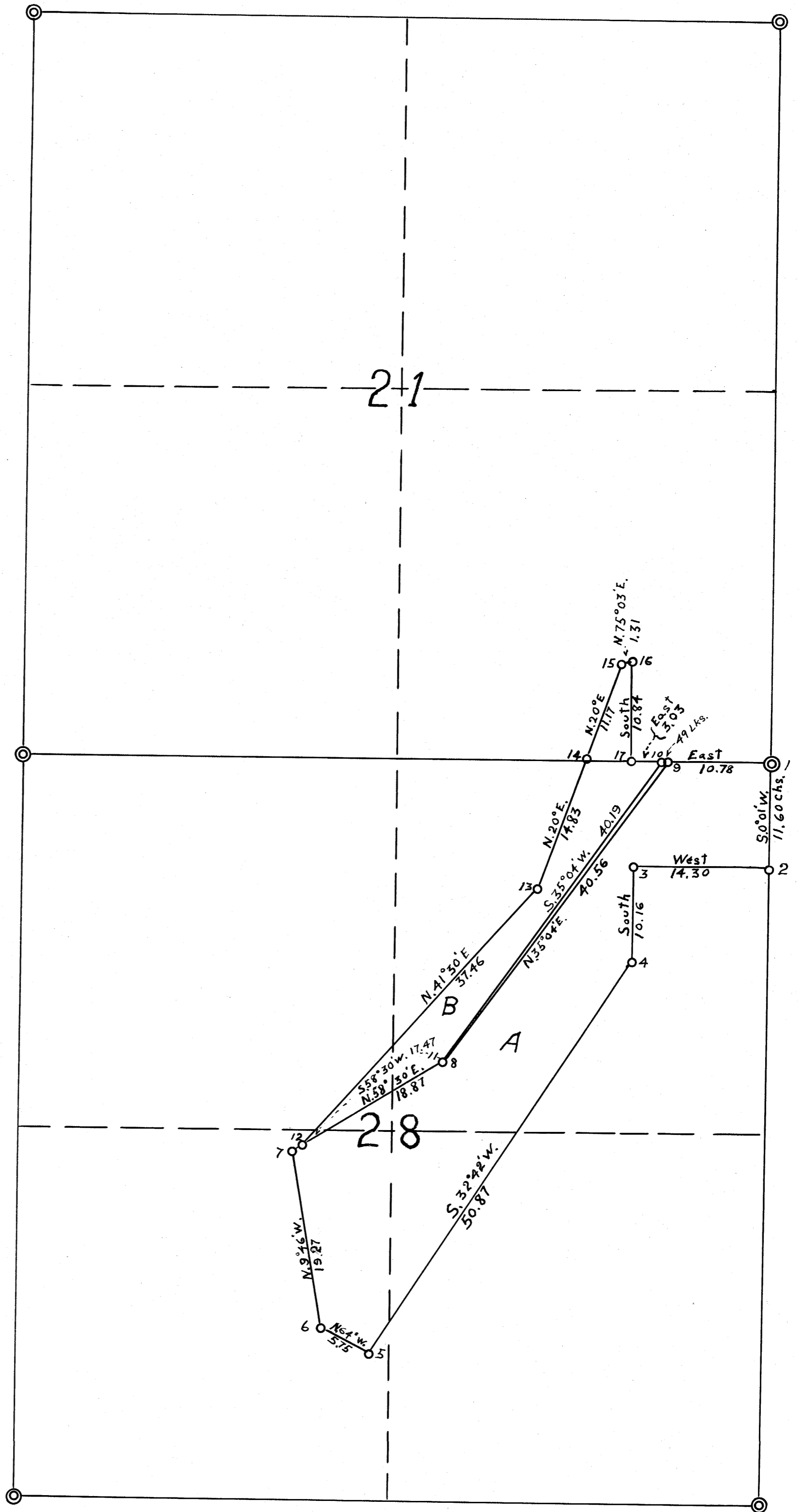
T.32S. R.3 W. W.M.

Douglas County Oregon.

By

Office of Co. Surveyor

H.L. Eppstein Co. Surveyor



COUNTY SURVEYORS FILE DATA
DO NOT REMOVE FROM OFFICE

N.E.R.

M6-20

D-58