

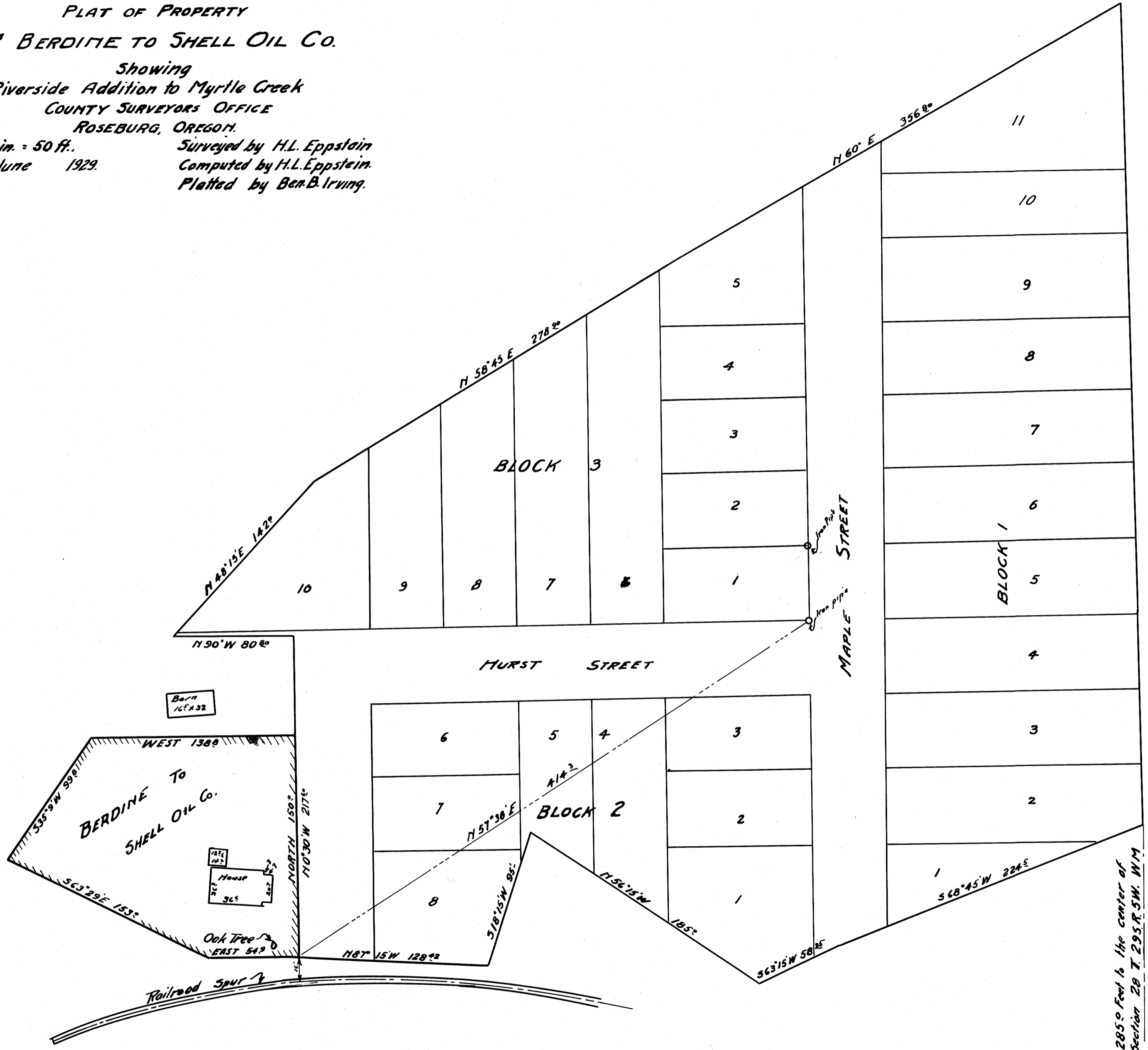
COUNTY SURVEYORS FILE DATA
DO NOT REMOVE FROM OFFICE

PLAT OF PROPERTY
WM BERDINE TO SHELL OIL CO.

Showing
Riverside Addition to Myrtle Creek
COUNTY SURVEYORS OFFICE
ROSEBURG, OREGON.

Scale: 1 in. = 50 ft.
Date: June 1929.

Surveyed by H.L. Eppstein
Computed by H.L. Eppstein
Platted by Ben B. Irving.



2850 Feet to the center of
Section 28 T 29 S R 5 W. W.M.

Drawer 58

C.S. File No. 1415
M 6 - 15

MAP FILE M 6 - 15