

COUNTY SURVEYORS FILE DATA  
DO NOT REMOVE FROM OFFICE

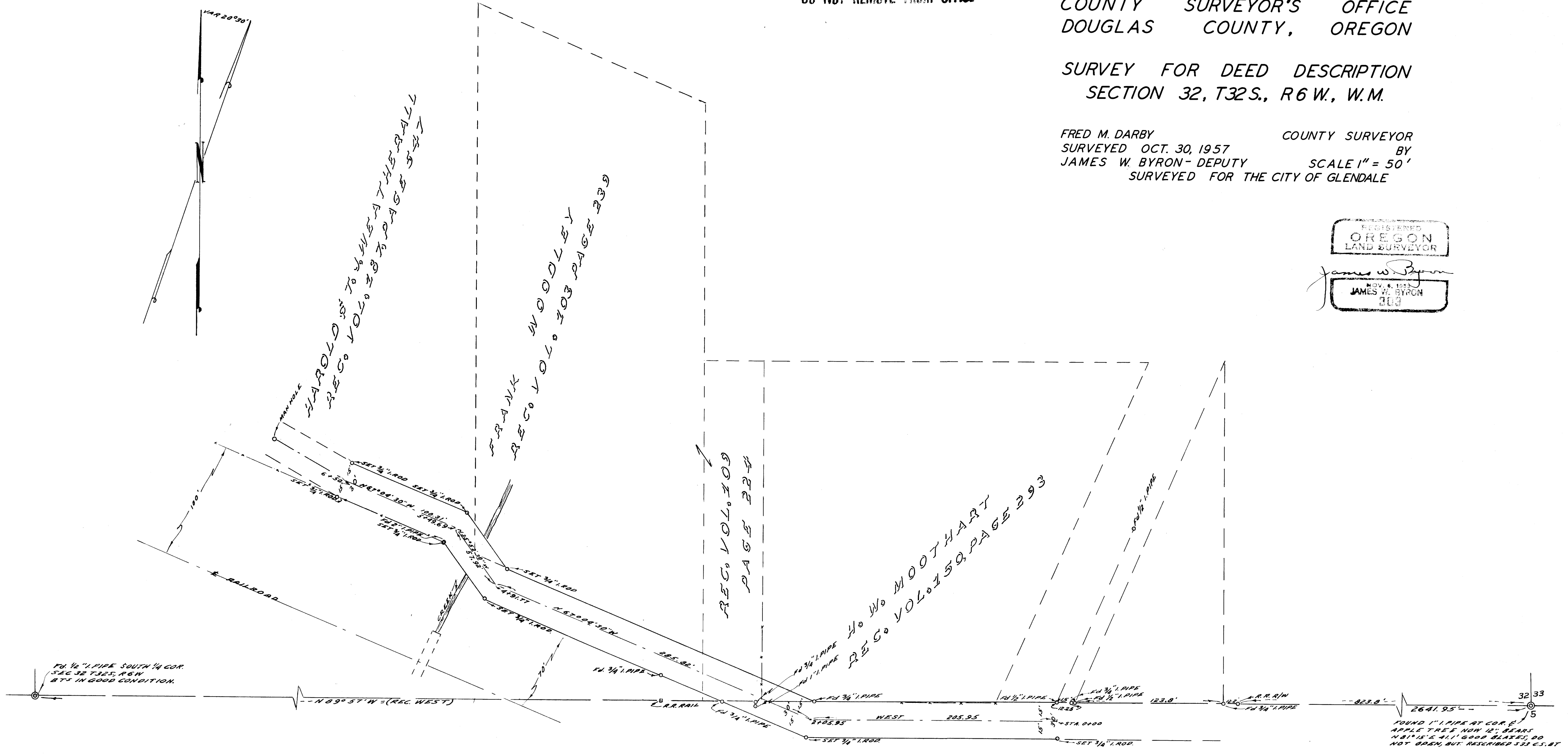
COUNTY SURVEYOR'S OFFICE  
DOUGLAS COUNTY, OREGON

SURVEY FOR DEED DESCRIPTION  
SECTION 32, T32S., R6W., W.M.

FRED M. DARBY COUNTY SURVEYOR  
SURVEYED OCT. 30, 1957 BY  
JAMES W. BYRON-DEPUTY SCALE 1" = 50'  
SURVEYED FOR THE CITY OF GLENDALE

REGISTERED  
OREGON  
LAND SURVEYOR

*James W. Byron*  
NOV. 6, 1953  
JAMES W. BYRON  
309



FD 1/2" I. PIPE SOUTH 1/4 COR.  
SEC 32 T32S. R6W  
BTS IN GOOD CONDITION.

FOUND 1" I. PIPE AT COR. E  
APPLE TREE NOW 12" BEARS  
N 81° 15' E ALL GOOD BLAZES, DO  
NOT OPEN, BUT REDESCRIBED 333 C.S. BT

21-9-54  
12/22/54 5717.57

21-9-54  
12/22/54 5717.57

CS FILE FOLDER

CONTAINS

MORE

INFORMATION