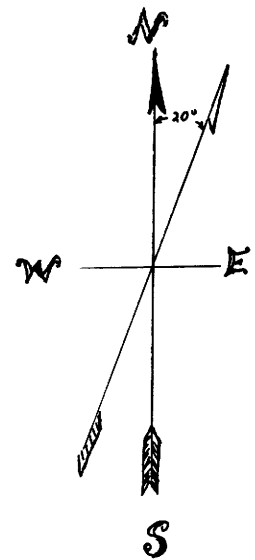


COUNTY SURVEYORS FILE DATA
DO NOT REMOVE FROM OFFICE

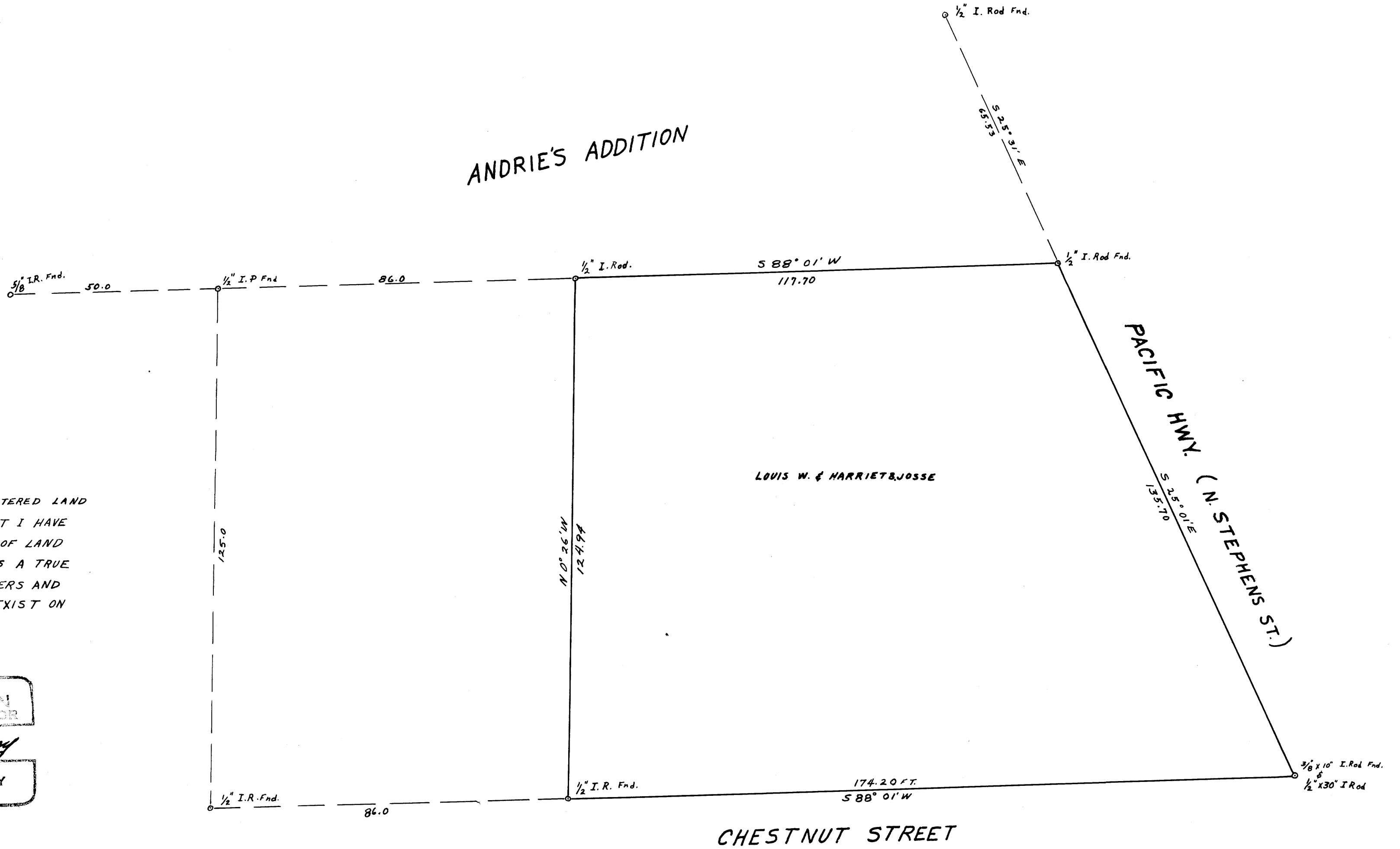
LOUIS W. & HARRIET B. JOSSE

PROPERTY
SECTIONS 18 & 13, T 27 S. R 5 & 6 W. W.M.
DOUGLAS Co. OREGON

M 6-10



ANDRIE'S ADDITION



I, A.R. TUCKEY, A REGISTERED LAND SURVEYOR, CERTIFY THAT I HAVE SURVEYED THIS PARCEL OF LAND AND THAT THIS MAP IS A TRUE REPRESENTATION OF CORNERS AND DISTANCES AS THEY EXIST ON THE GROUND.

REGISTERED
OREGON
LAND SURVEYOR
A. R. Tuckey
MAY 4, 1956
A. R. TUCKEY
380

FILED
RECEIVED
OCT 10 1957
COUNTY SURVEYOR
DOUGLAS COUNTY, ORE.

SURVEY FOR
Louis W. & Harriet B. JOSSE
Scale: 1 inch = 20 feet
Drawn: October 1, 1957 by A.R. Tuckey

01-9 W