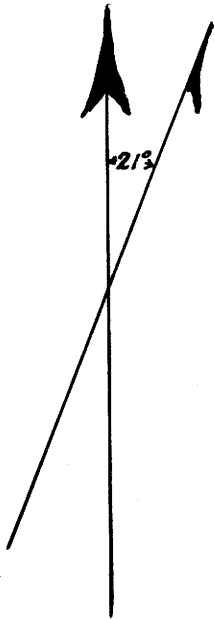


**COUNTY SURVEYORS FILE DATA
DO NOT REMOVE FROM OFFICE**

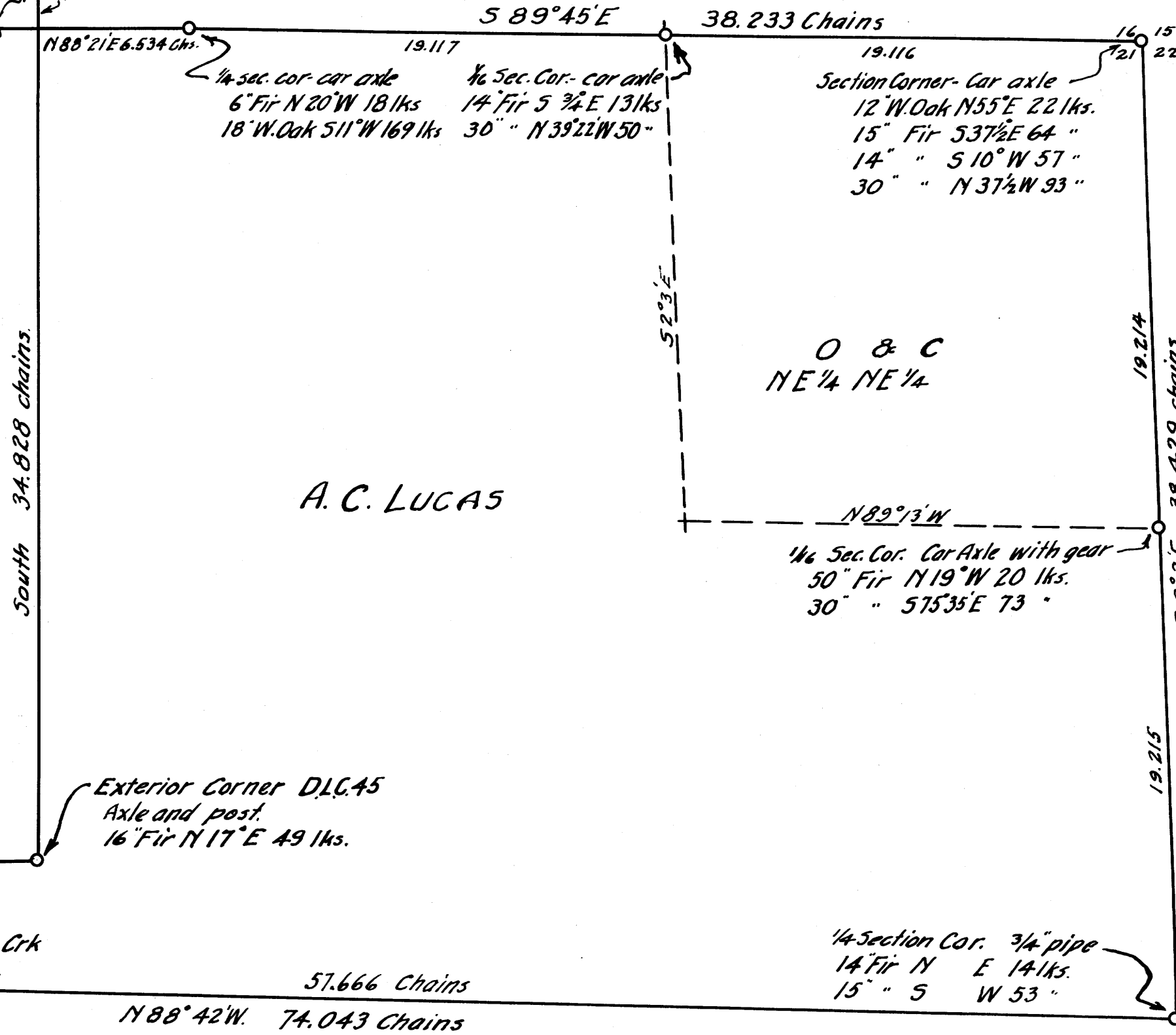
A.C. LUCAS SURVEY

Section 21 T. 29S R. 6W.
Surveyed by BEN. B. IRVING
Jan. Feb. 1929 Scale - 1 in = 5 Chains

A.D. Willis. D.L.C. #45.



NE Cor. C1.45
2.00 Chains



N 88° 21' E 6.534 Chs.

1/4 Sec. Cor. car axle
6" Fir N 20° W 18 lks
18" W. Oak S 11° W 169 lks

1/6 Sec. Cor. car axle
14" Fir S 7/4° E 13 lks
30" " N 39° 22' W 50"

Section Corner - Car axle
12" W. Oak N 55° E 22 lks.
15" Fir S 37 1/2° E 64 "
14" " S 10° W 57 "
30" " N 37 1/2° W 93 "

O & C
NE 1/4 NE 1/4

1/6 Sec. Cor. Car Axle with gear
50" Fir N 19° W 20 lks.
30" " S 75° 35' E 73 "

Interior Corner DLC 45 Car Axle
12" Fir S 15° W 49 lks
30" " N 6° W 24 "

Exterior Corner DLC 45
Axle and post.
16" Fir N 17° E 49 lks.

1/4 Sec. Cor. Car Axle
12" W. Oak N 30° W 79 lks.
12" Fir S 89° E 43 lks.

S.W. Cor. Lot 7
Car Axle in Willis Crk
18" Fir S 16° E 34 lks.

1/4 Section Cor. 3/4" pipe
14" Fir N E 14 lks.
15" " S W 53 "

South 4.807 Chs.

West 12.386 Chains

57.666 Chains

N 88° 42' W. 74.043 Chains

19.214

38.429 chains

19.215

5.203' E

19.116

38.233 Chains

19.117

FILE 22/33
M 6-1
Vol. 3 Pg. 290 M 6-1

Facing page 290 Book 3 County Surveyors Records.

1-9 W