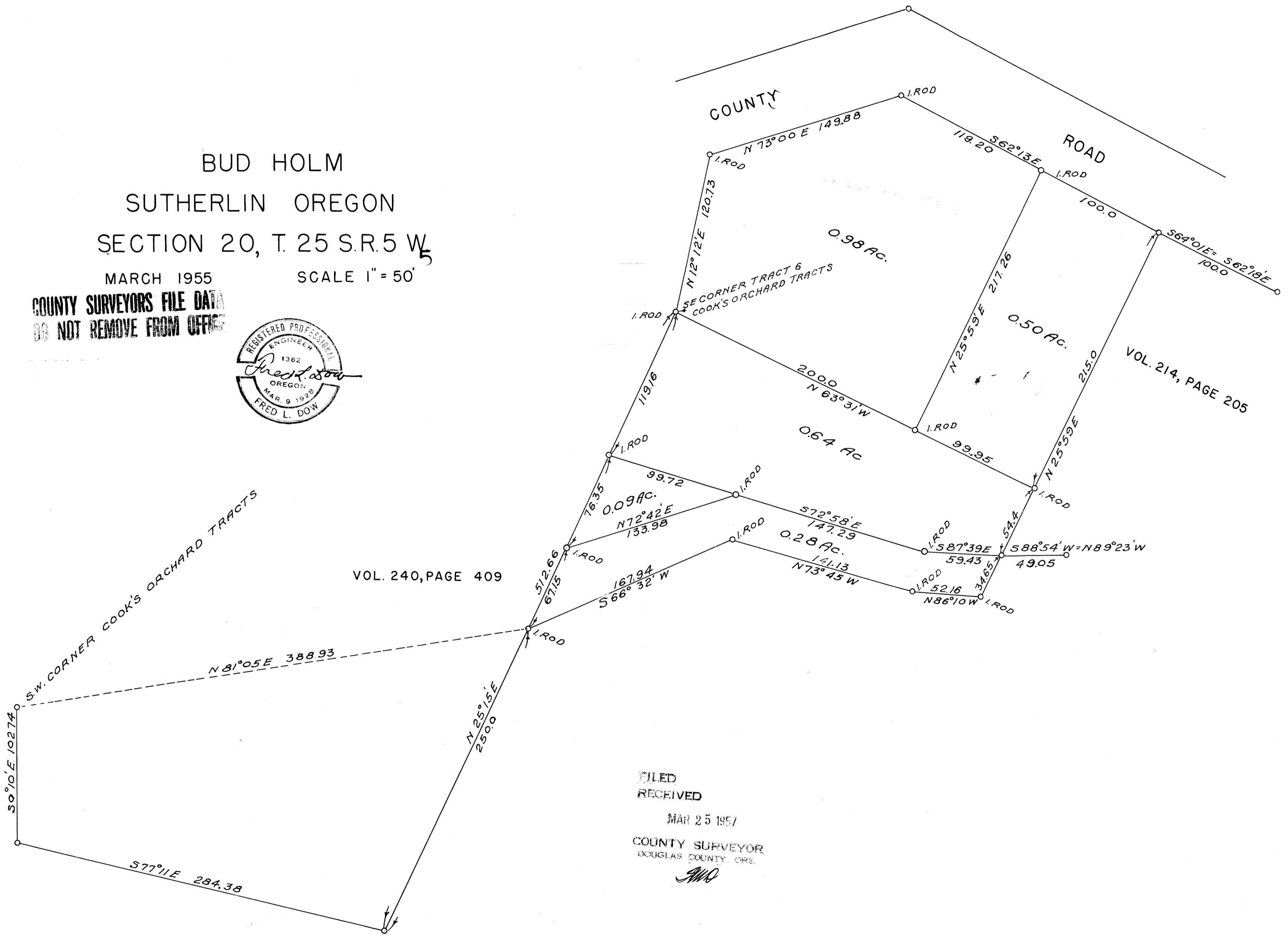


BUD HOLM  
 SUTHERLIN OREGON  
 SECTION 20, T. 25 S. R. 5 W.

MARCH 1955 SCALE 1" = 50'

COUNTY SURVEYORS FILE DATA  
 DO NOT REMOVE FROM OFFICE



VOL. 240, PAGE 409

VOL. 214, PAGE 205

FILED  
 RECEIVED  
 MAR 25 1957  
 COUNTY SURVEYOR  
 DOUGLAS COUNTY, ORE.  
 AND

(SEE ALSO M5/8)  
 MAP FILE M5 19

MAP FILE M5 19  
 (SEE ALSO M5/8)