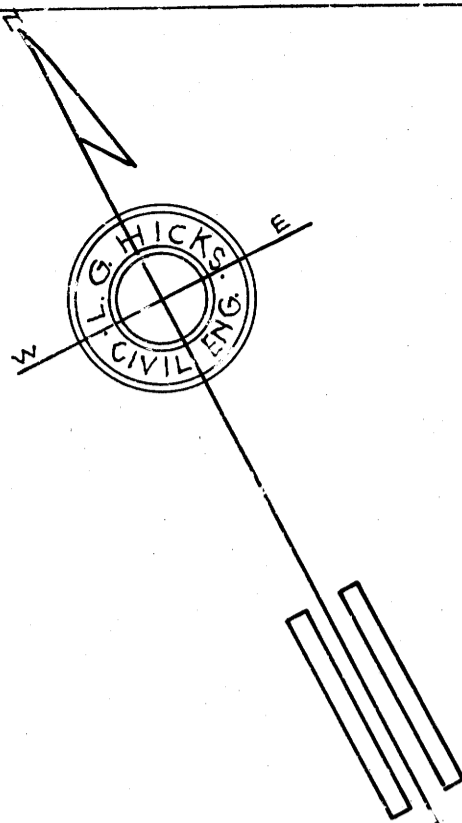


TRIM SURVEYORS FILE DATA  
TO BE REMOVED FROM OFF

# HIGH SCHOOL TRACT. ROSEBURG ORE.

## SCHOOL DISTRICT No. 4.



The alley shown between Lots 1-2 and 9 in Block 17 vacated by an Ordinance of the City Council of Roseburg, Oregon on Ordinance No. 658

*L.G. Hicks*  
City Recorder

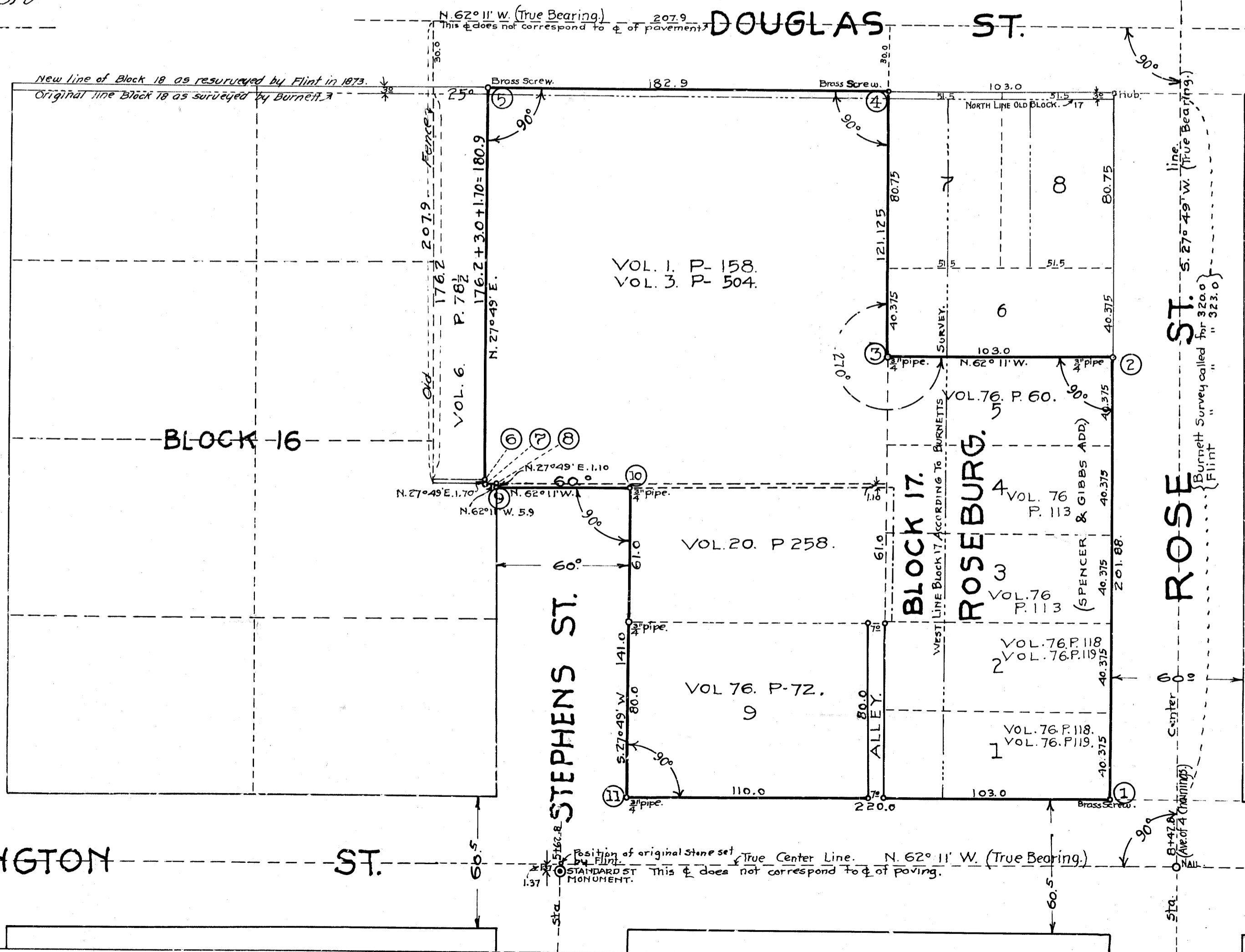
HIGH SCHOOL TRACT			
STA	COURSE.	DISTANCE.	DESCRIPTION OF CORNER.
1	N. 27° 49' E.	201.88	BRASS SCREW IN WALL.
2	N. 62° 11' W.	103.00	3/4" PIPE.
3	N. 27° 49' E.	121.125	2 1/2" PIPE.
4	N. 62° 11' W.	182.90	BRASS SCREW IN WALK.
5	S. 27° 49' W.	179.20	" " "
6	S. 27° 49' W.	1.70	1/2" PIPE.
7	S. 62° 11' E.	5.90	2 1/2" PIPE.
8	S. 27° 49' W.	1.10	IRON ROD.
9	S. 62° 11' E.	60.00	1/2" PIPE.
10	S. 27° 49' W.	141.00	1/2" PIPE.
11	S. 62° 11' E.	220.00	2 1/2" PIPE.

I hereby certify that I have surveyed the High School SITE as shown on the accompanying plot and have set corners as indicated.

*L.G. Hicks*  
Civil Engineer.

Roseburg, Ore.  
May 11-1916.

SCALE 1 IN = 40 FT.



VOL. 3 PG. 272  
 SUR. FILE 19/23  
 MAP FILE M. 5 - 80

MAP FILE M. 5 - 80

BLOCK 17  
 Original Survey of 1873.  
 Station 0+00