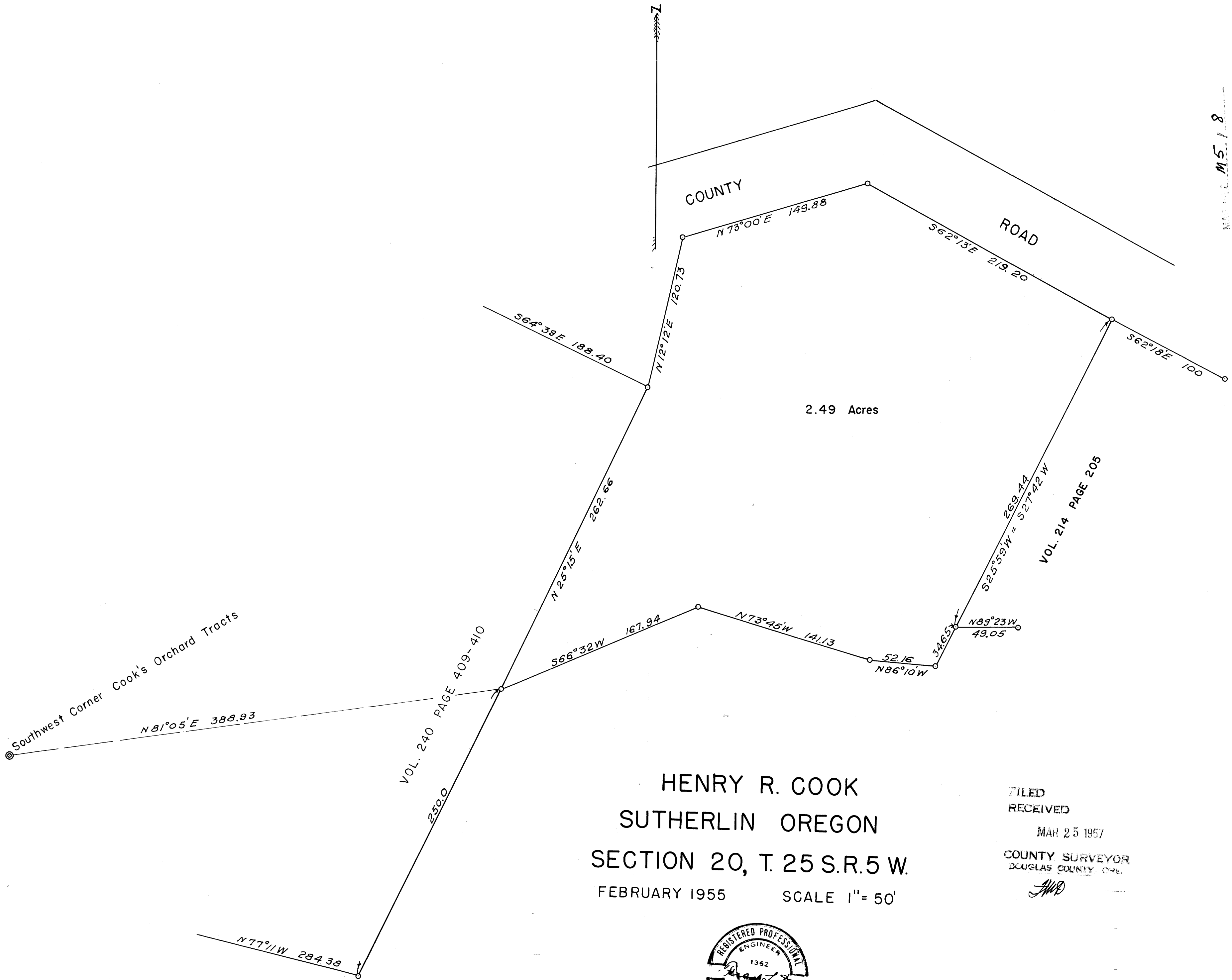


MAP FILE M5-18  
(SEE ALSO M5/19)



2.49 Acres

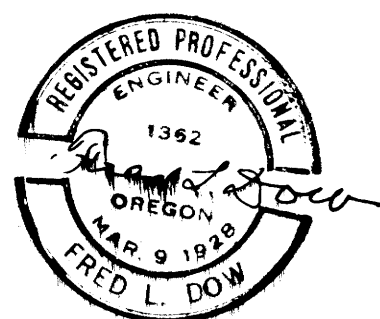
Southwest Corner Cook's Orchard Tracts

VOL. 240 PAGE 409-410

VOL. 214 PAGE 205

HENRY R. COOK  
 SUTHERLIN OREGON  
 SECTION 20, T. 25 S. R. 5 W.  
 FEBRUARY 1955 SCALE 1" = 50'

FILED  
 RECEIVED  
 MAR 25 1957  
 COUNTY SURVEYOR  
 DOUGLAS COUNTY, ORE.  
*FWD*



COUNTY SURVEYORS FILE DATA  
DO NOT REMOVE FROM OFFICE

(SEE ALSO M5/19)  
MAP FILE M5-18  
8