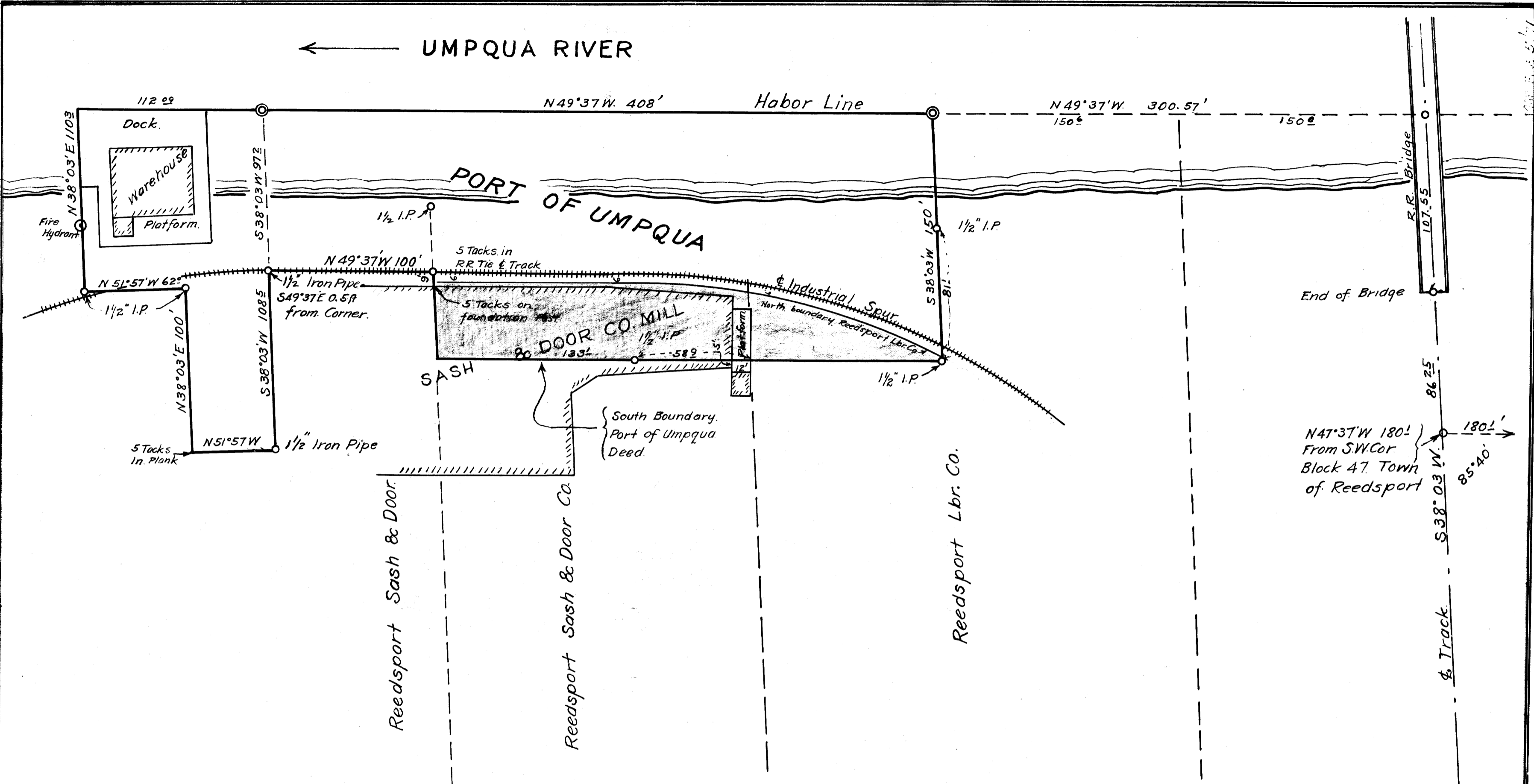


← UMPQUA RIVER



MAP OF SURVEY

MADE FOR

PORT OF UMPQUA

In Lot 2 Sec. 35 T 21 S R 12 W. W.M.

Showing overlap of Deeds held by Port of Umpqua,
 Reedsport Lbr. Co. and Reedsport Sash and Door Co.
 Portion of deeds overlapping shown by shaded area.

Scale 50 ft to 1 inch.

Surveyed April 1924

J.W. Cole. Co. Sur.

COUNTY SURVEYORS
 DO NOT REMOVE FROM FILE

FB. 9-31
 Vol. 3 Pg. 178
 E.M. 5-71

M 5-71