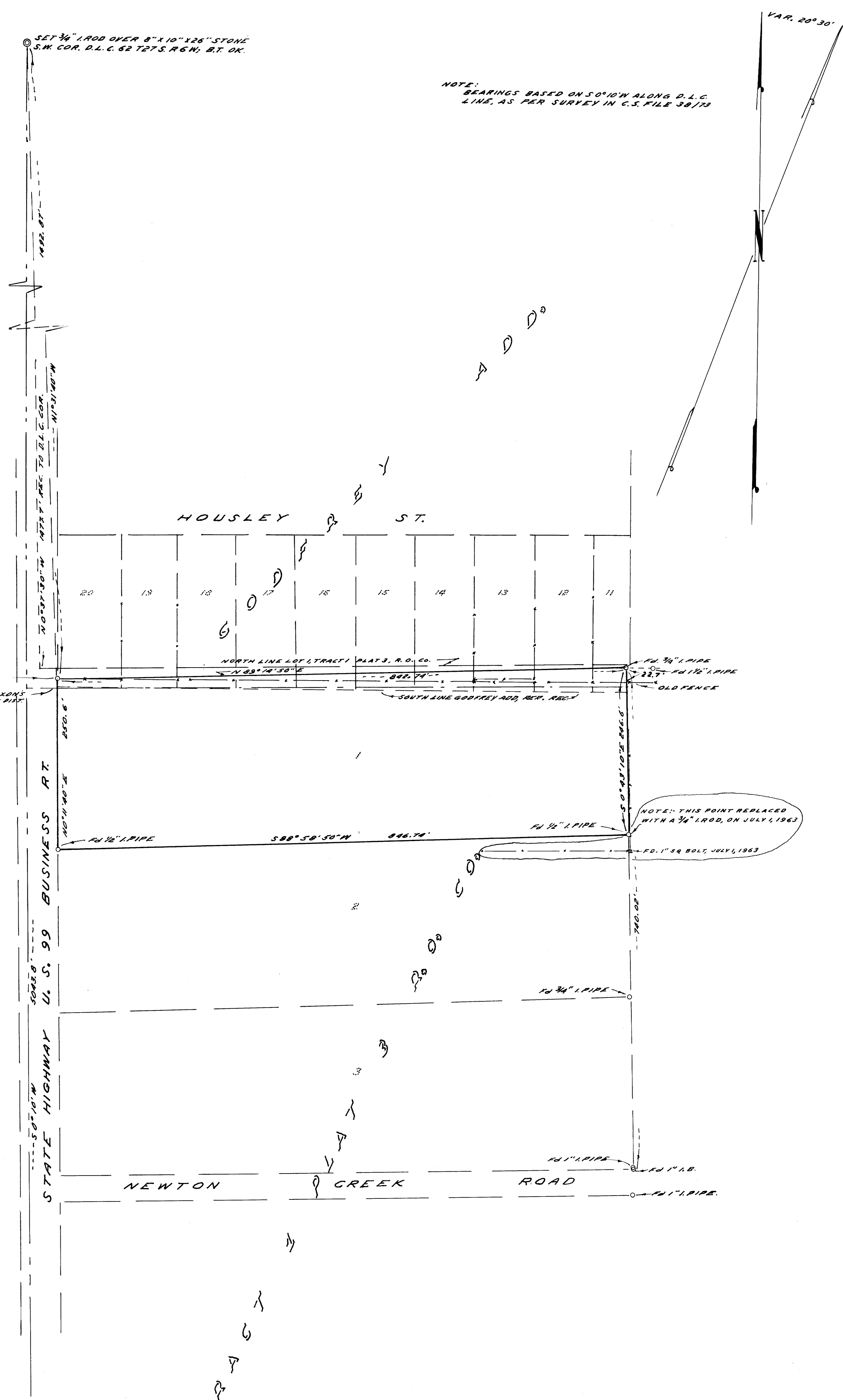


SET 3/4" I. ROD OVER 8" X 10" X 26" STONE
S.W. COR. D.L.C. 62 T27S. R6W; B.T. OK.

NOTE:
BEARINGS BASED ON S0°10'W ALONG D.L.C.
LINE, AS PER SURVEY IN C.S. FILE 38/73

VAR. 20°30'



SOUTH LINE LOTS AS PER DIXON'S
ADD. BY PROPORTION BASED ON DIST.
BETWEEN D.L.C. CORNERS.

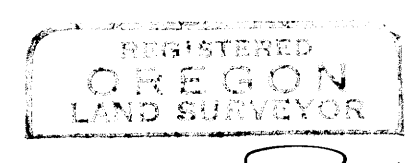
NOTE: THIS POINT REPLACED
WITH A 3/4" I. ROD, ON JULY 1, 1963

COUNTY SURVEYOR'S OFFICE
DOUGLAS COUNTY, OREGON

SURVEY TO LOCATE MONUMENTS
SECTION 1, T27S., R6W., W.M.

FRED M. DARBY COUNTY SURVEYOR
SURVEYED SEPT. 4, 1957 BY
JAMES W. BYRON - DEPUTY SCALE 1" = 100'
SURVEYED FOR R. B. SPRINGER

S.W. COR. D.L.C. 99 AS PER
C.S. FILE 38/73



James W. Byron
REGISTERED
JAMES W. BYRON
303

COUNTY SURVEYOR
DO NOT REMOVE

CS FILE FOLDER

CONTAINS

MORE

INFORMATION