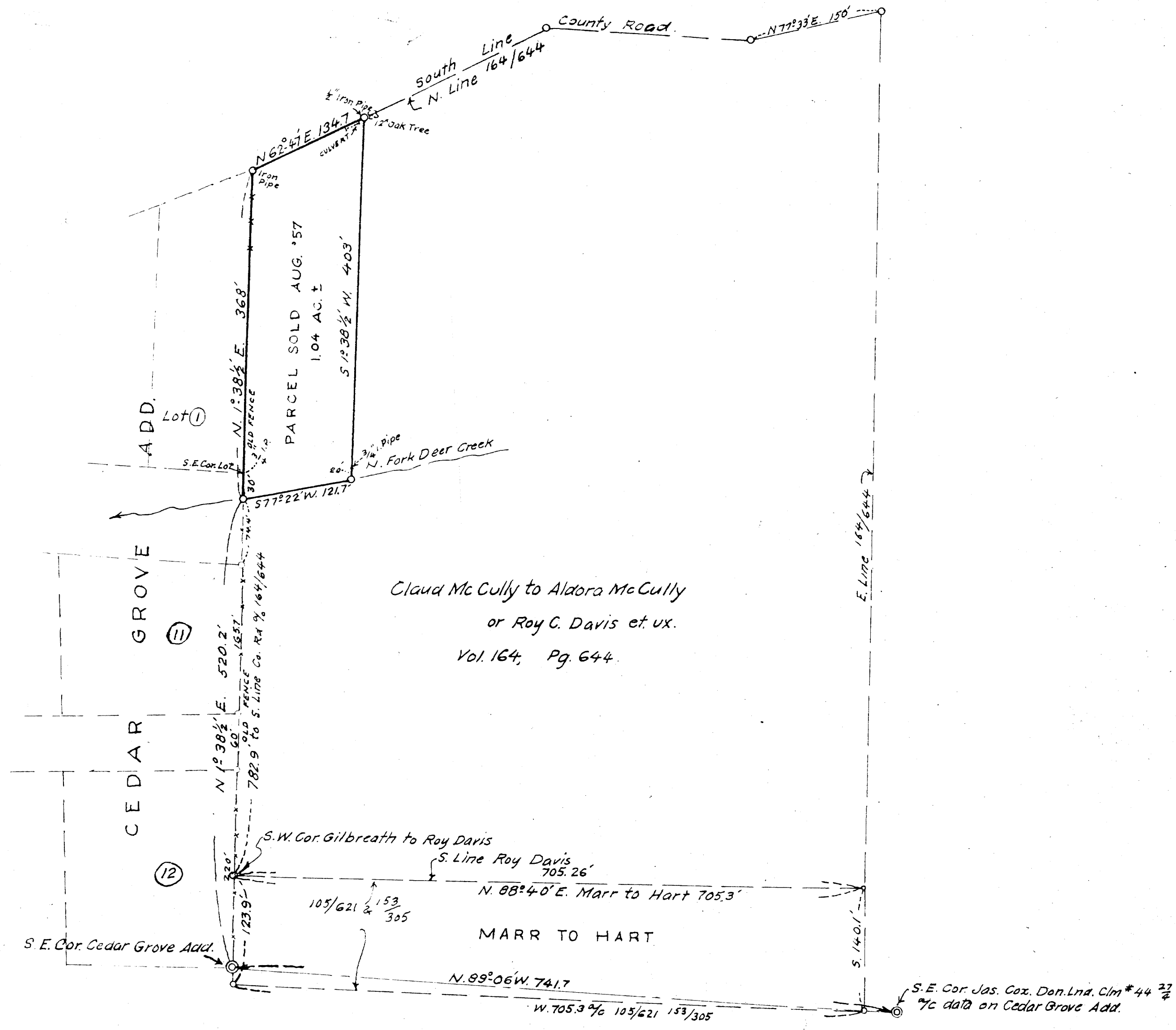


M 5-60



Claud McCully to Aldora McCully  
or Roy C. Davis et ux.  
Vol. 164, Pg. 644.

THIS COPY MADE FROM  
A XEROX 2510  
DATE 2-23-89

COUNTY SURVEYORS FILE  
NOT REMOVE FROM OFFICE

FILED  
RECEIVED  
SEP 10 1957  
COUNTY SURVEYOR  
DOUGLAS COUNTY, ORE.

PT. OF ROY C. DAVIS RANCH  
SHOWING PORTION SOLD WHICH IS  
SOUTH OF COUNTY ROAD & EAST OF  
CEDAR GROVE ADD. IN SEC. 21, T27S, R4W, W.M.  
AUG. 1957  
*Arthur Boyer* 1" = 100 ft.

M 5-60