

37.2
2nd St.

PACIFIC

AVENUE

SECOND

FIRST

COUNTY SURVEYORS FILE
DO NOT REMOVE FROM FILE

Section Line

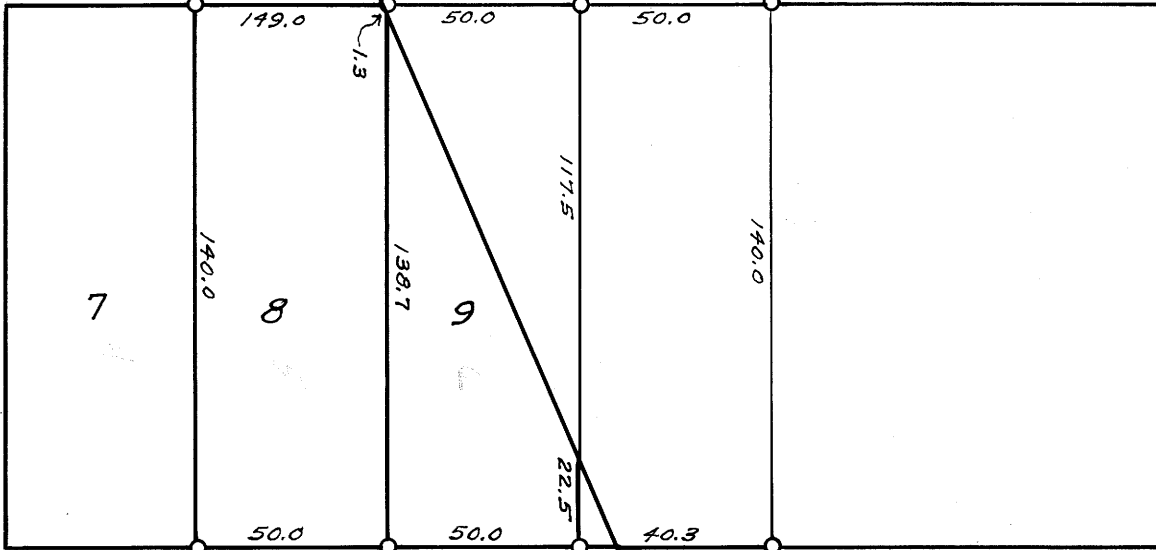
9

5

20.0
BLOCK 1

ST.

ST.



WILLIS

AVENUE

COUNTY SURVEYOR'S OFFICE
DOUGLAS COUNTY, OREGON.

SURVEY FOR
SCHOOL DISTRICT # 77
IN CITY OF GLENDALE IN BLOCK 1
and LAND ADJOINING
GEO. J. WENDEROTH, DEPUTY, AUG. 1957
SCALE 1"=50 FT.

FILED
RECEIVED

AUG 23 1957

COUNTY SURVEYOR
DOUGLAS COUNTY, ORE.

MAP FILE M 5-54

DOUGLAS COUNTY
OREGON
GEO. J. WENDEROTH
DEPUTY COUNTY SURVEYOR

73-6-8-4-3