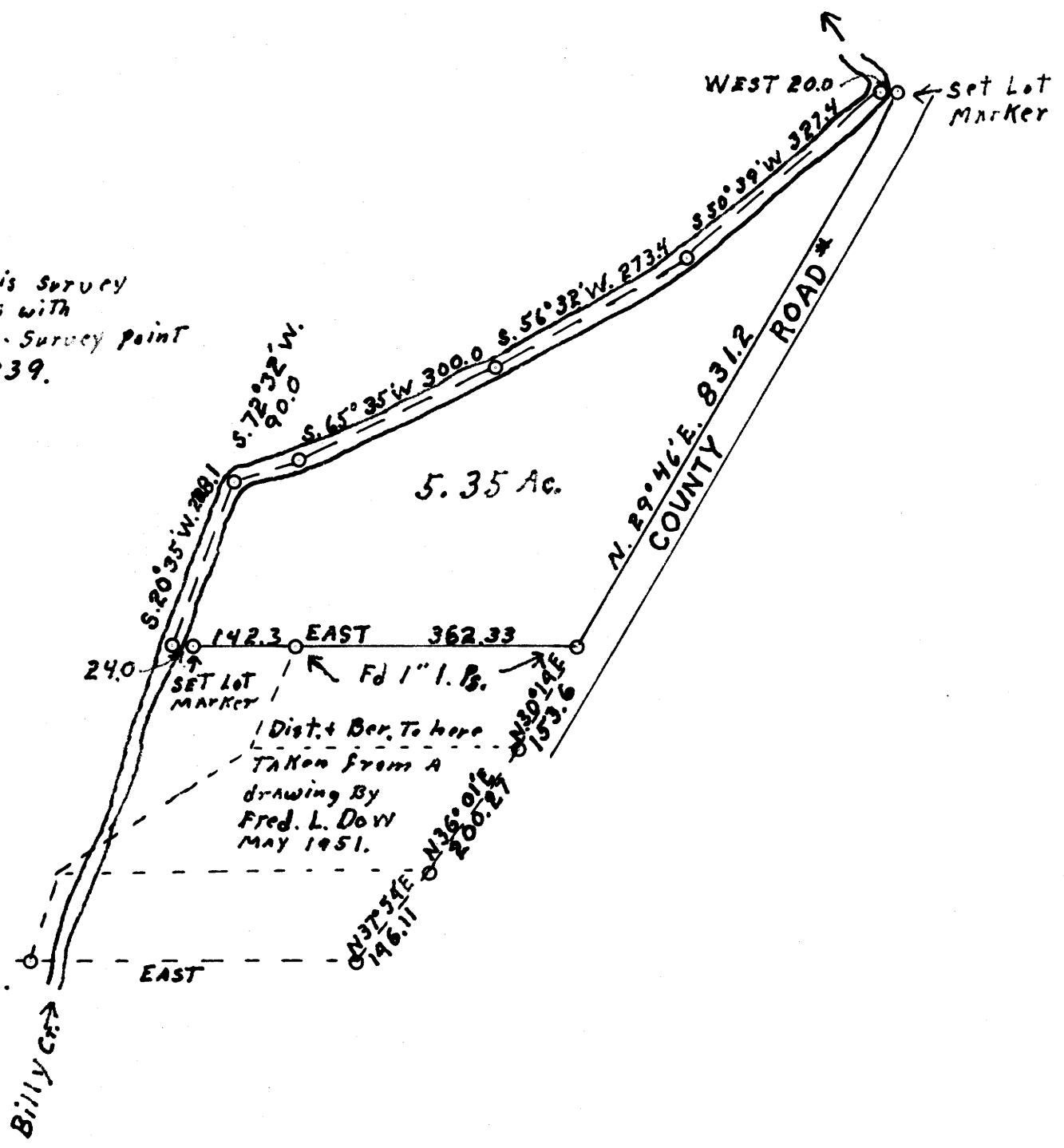
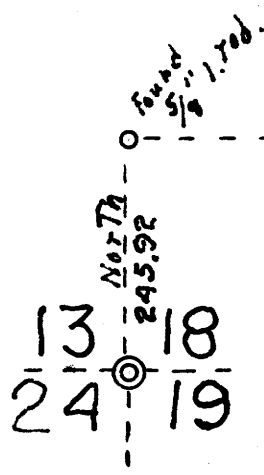
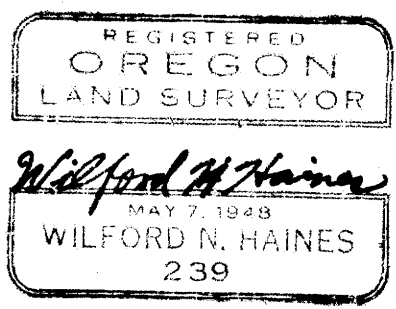


Note

Lot Markers set on this survey are 36" x 1" T IRONS with brass caps inscribed Survey point Wilford N. Haines # 239.



FILED
RECEIVED

AUG 19 1957

COUNTY SURVEYOR
DOUGLAS COUNTY, ORE.

JAMES O. HAINES
EIKTON OREGON
SECTION 18 T.22S., R.5 W.
JULY 1957 SCALE 1" = 200'

COUNTY SURVEYORS
DO NOT REMOVE FROM