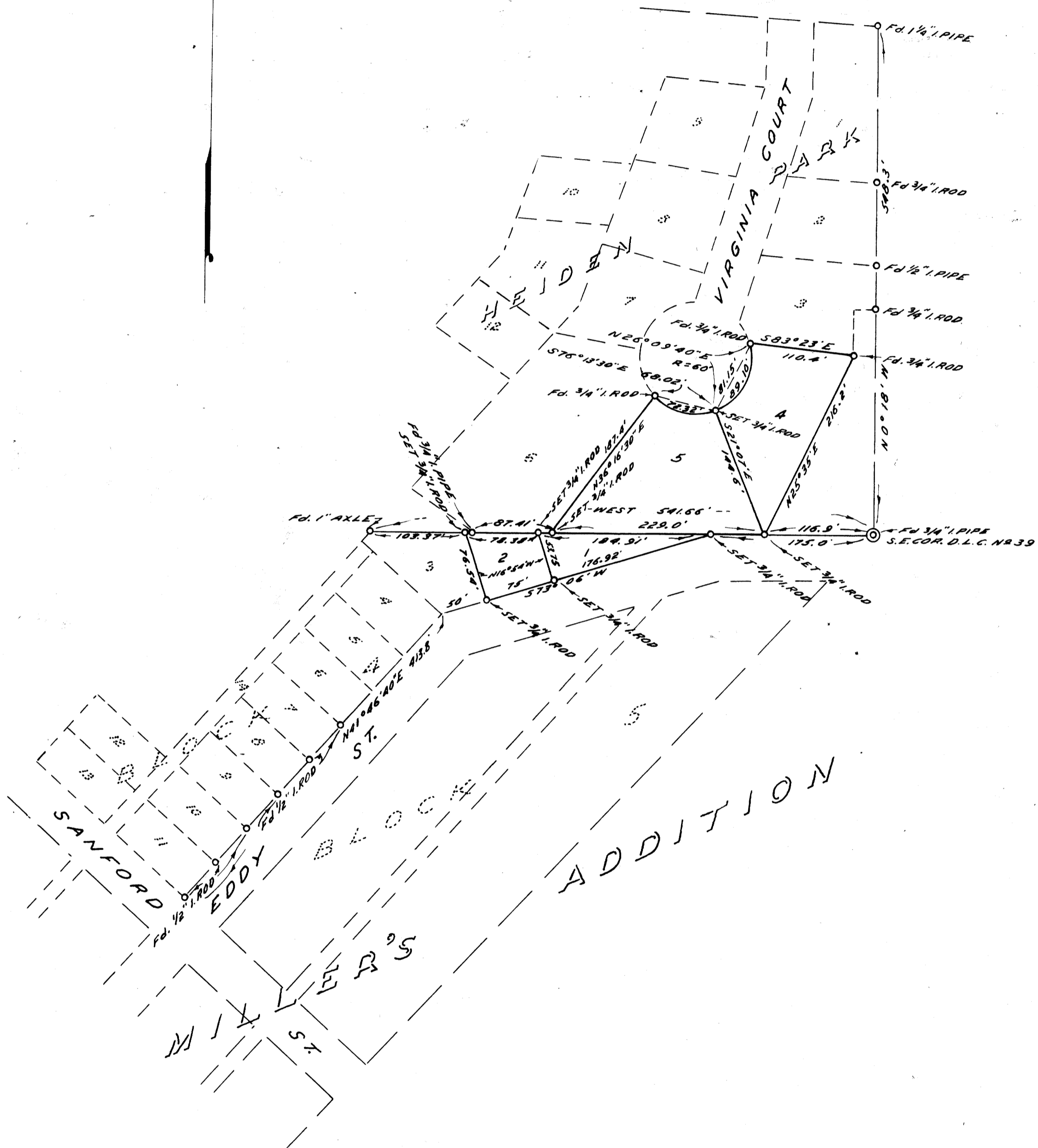


NOTE: BEARINGS SHOWN ARE TRUE, AS PER THE PLAT OF HEIDEN PARK THE BASE BEARING BEING N 0° 18' W, ALSO SEE MONTGOMERY SURVEY FOR CONTINUATION OF COORDINATES
NOTE: SEE PLAT OF HEIDEN PARK & NOTE EQUATIONS IN BEARINGS AROUND LOTS 4 & 5.



COUNTY SURVEYOR'S OFFICE
DOUGLAS COUNTY, OREGON

SURVEY OF LOTS 4 & 5 HEIDEN PARK
ROSEBURG OREGON

FRED M. DARBY COUNTY SURVEYOR
SURVEYED JULY 1957 BY
JAMES W. BYRON - DEPUTY SCALE 1" = 100'
SURVEYED FOR EARL WILEY

DO NOT REMOVE THIS FILE

James W. Byron