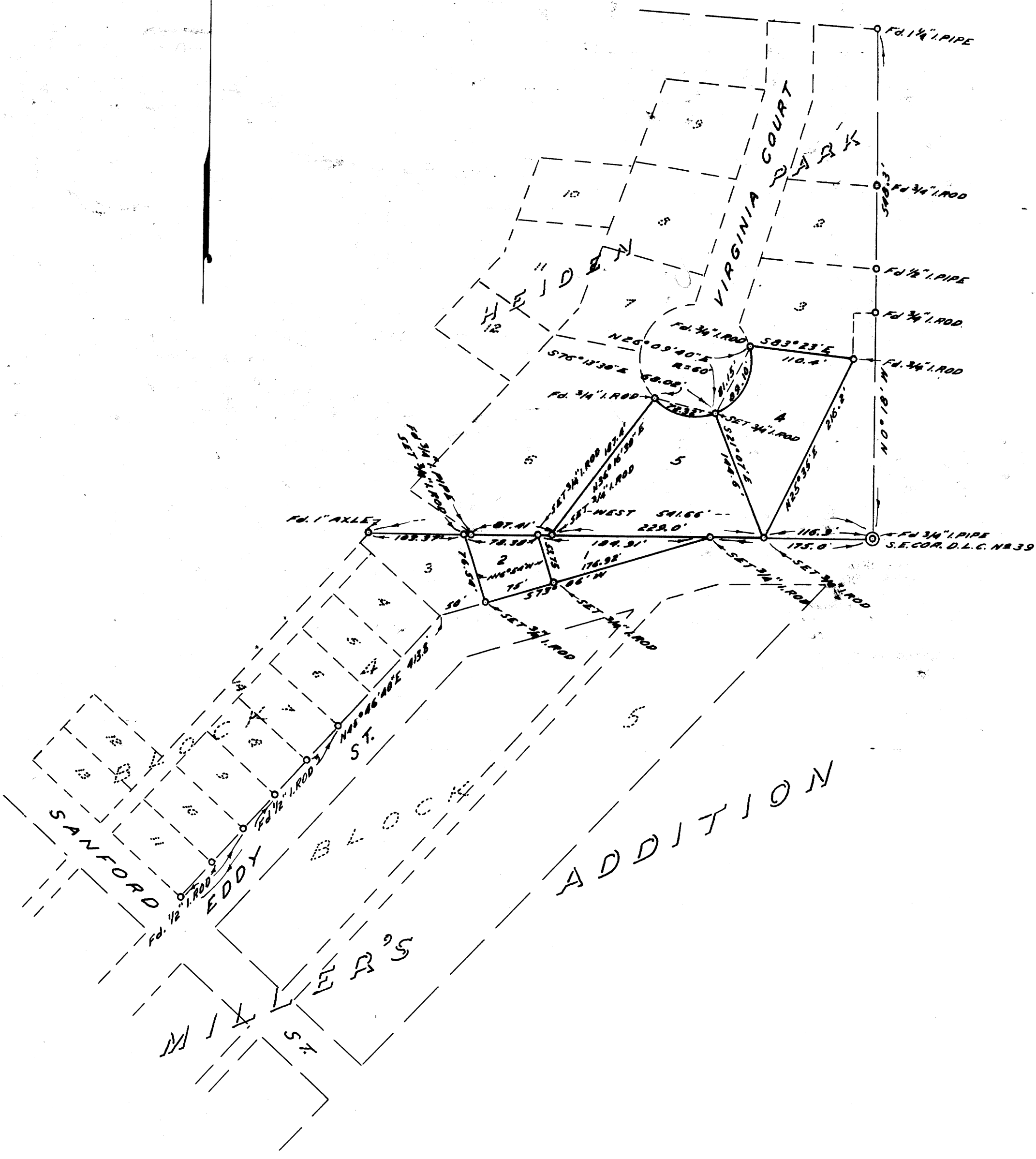


NOTE: BEARINGS SHOWN ARE TRUE, AS PER THE  
PLAT OF HEIDEN PARK THE BASE BEARING  
BEING N 0° 18' 16" ALSO SEE MONUMENTARY  
SURVEY FOR CONTINUATION OF COORDINATES  
NOTE: SEE PLAT OF HEIDEN PARK & NOTE  
EQUATIONS IN BEARINGS AROUND LOTS  
4 & 5.



COUNTY SURVEYOR'S OFFICE  
DOUGLAS COUNTY, OREGON  
T 27 S R 5 W SEC. 30  
SURVEY OF LOTS 1 & 2 BLOCK 4  
MILLER'S ADDITION TO ROSEBURG

FRED M. DARBY COUNTY SURVEYOR  
SURVEYED AUG. 13, 1957 BY  
JAMES W. BYRON - DEPUTY SCALE 1" = 100'  
SURVEYED FOR ELMER GILES

COUNTY SURVEYORS FILE IN  
DO NOT REMOVE FROM

REGISTERED  
COUNTY  
LAND SURVEYOR  
James W. Byron  
JAMES W. BYRON  
1957