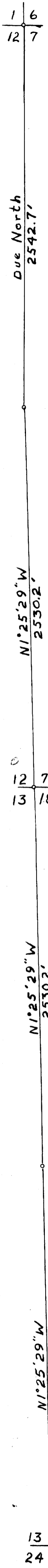


MS 171 SW

T29S, R6 & 7W



Resurvey of Sec. Line between Secs. 7 & 12 and Secs. 13 & 18, T29S, R6 & 7W, W.M. Scale 1" = 500' May 21, 1957



Old corner found  
Used corner as re-established by GLO in May, 1957

Old corner found  
Remains of the B. Oak and the Laurel witness trees were found. Corner to be re-established by County Surveyor's office. (Sec 47/194)

Explanation Note:

Commencing at Sec. Cor. 13/18 I run a Transit traverse in a northerly direction tying in to 1/4 Cor between Secs. 7 & 12 and the Sec. Cor. 116/127. thence in a southerly direction back to point of beginning. The traverse was calculated revealing a reasonable error of closure (approximately 1:4340 ft.) and then the coordinates for the Sec. Cor. 12/7 and the 1/4 Cor between Secs. 13 & 18 were computed. Calculated bearings are based upon a magnetic North-South line at Sec. Cor. 13/18 Using 20° E. Declination.

Set 1" Iron Pipe for Sec. Cor. from which bears  
A Maple, 14" in diameter bearing N77°30'E a distance of 70.2 ft. scribed T29S R6W S7 BT  
A Maple, 16" in diameter bearing S41°10'E a distance of 86.8 ft. Scribed T29S R7W S18 BT  
A Fir, 14" in diameter bearing S70°W a distance of 125.0 ft. scribed T29S R7W S13 BT  
No trees in NW Quarter.

Set 3/4" Iron Pipe for 1/4 Cor. from which bears  
A Fir, 14" in diameter bearing S78°50'E a distance of 36.6 ft. scribed 1/4 T29S S18 BT  
A Fir, 12" in diameter bearing S62°W a distance of 70.7 ft. scribed 1/4 T29S S13 BT

FILED  
RECEIVED  
JUL 16 1957  
COUNTY SURVEYOR  
DOUGLAS COUNTY, ORE.

THIS COPY MADE FROM  
A XEROX 2510  
DATE 2-22-89

Old corner found  
Used corner as re-established by GLO in May, 1957