

C&D. Lbr. Co. 1957

MAP FILE MS 138

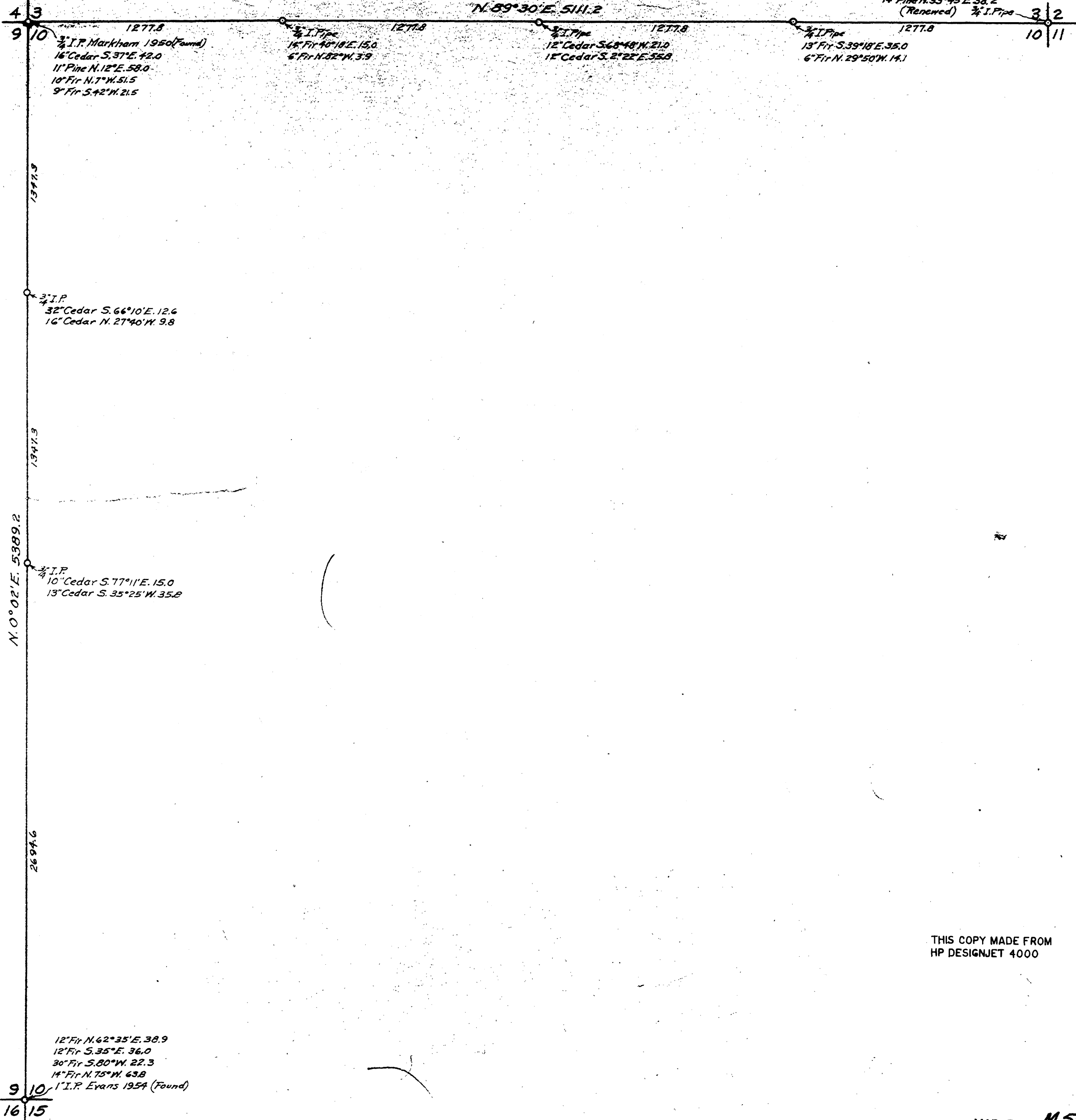
COUNTY SURVEYOR'S OFFICE
DOUGLAS COUNTY, OREGON.
SURVEYS IN
SECTION 10, T. 29S, R. 5W, W.M.
Geo. J. WENDEROTH, DEPUTY. Scale 1" = 400'

REGISTERED
OREGON
LAND SURVEYOR

Geo. J. Wenderoth

Commission Expires

16" W. Oak S. 3° N. 345.0
13" W. Oak S. 31° 26' E. 22.5
16" Pine N. 30° 13' W. 28.5
14" Pine N. 35° 45' E. 38.2
(Renewed) 3/4 I. Pipe



THIS COPY MADE FROM
HP DESIGNJET 4000

MAP FILE MS 138 P