

C.S. 47/118
M.S. 135

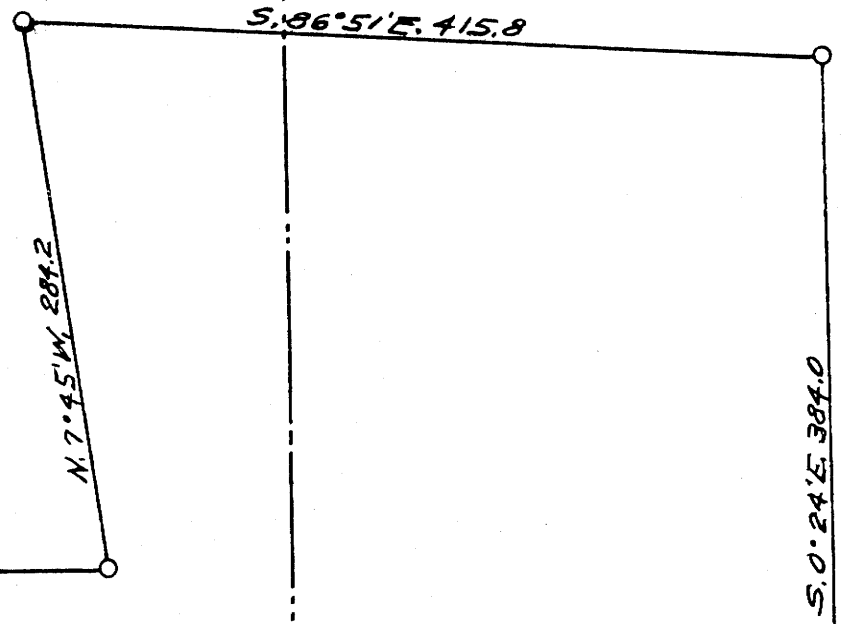
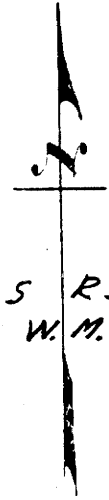
COUNTY SURVEY
DO NOT REMOVE FROM

DATE July 26, 89

THIS COPY MADE FROM
A XEROX 2510

Geo. J. Wenderoth

T305 R5W
W.M.



4.52 Ac. in N.W. 1/4 of
S.E. 1/4 of Sec. 27

J. Clarke D.L.C. #51

5.86 Ac. in D.L.C. #51

Canyon Creek
N. 8° 53' E. 103.1

1" I.P. Point of
Diversions between
Points

N. 67° 48' W. 404.8

West 424.0

N.E. Cor. D.L.C. #59
1" I.P. with Brass Cap

82.5

S. 89° 12' W. 257.3

S. 0° 24' E. 477.8

S. 89° 12' W.
26.7

J. Roberts D.L.C. #59

I, Geo. J. Wenderoth, of Azalea, Oregon do hereby
certify that this map was made from notes taken
during an actual survey made by me on Sept. 10, 1956;
that the monument shown on this map consisting
of a inch iron pipe is N. 67° 48' W. 404.8 ft. from the
Northeast Corner of D.L.C. #59.

Geo. J. Wenderoth

J. Reynolds D.L.C. #58
T305, R5W, W.M.

COUNTY SURVEYOR'S OFFICE
DOUGLAS COUNTY, OREGON.
SURVEY FOR
SCHOOL DISTRICT #8 FOR
WATER APPLICATION.

Scale 1"=100'

Sept. 24, 1956
MAP FILE M.S. 135
47/118