

FILED
RECEIVED

MAR 25 1957

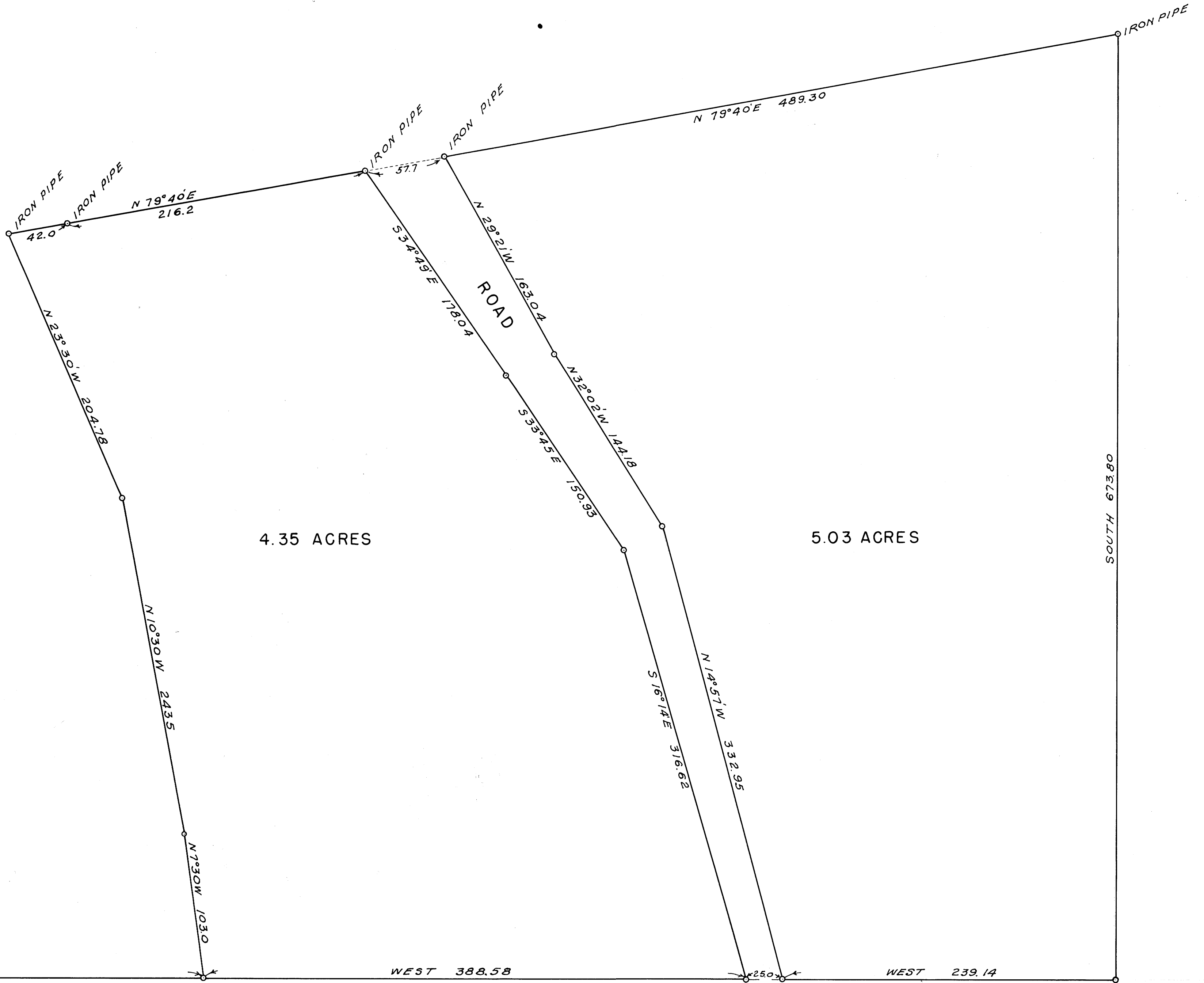
COUNTY SURVEYOR
DOUGLAS COUNTY, ORE.

JWB

COUNTY SURVEYORS FILE DATA
DO NOT REMOVE FROM OFFICE

ALFRED Le BLAC
SEC. 22, T. 30 S.R. 5 W.
OCTOBER 1954 SCALE 1"=50'

Frederick Dow



MAP FILE MS-1-3

MS-1-3

MAP FILE MS-1-3

S.W. CORNER OF THE SAM SAZLEY D.L.C. No. 49
SECTION 22, T. 30 S.R. 5 W.