

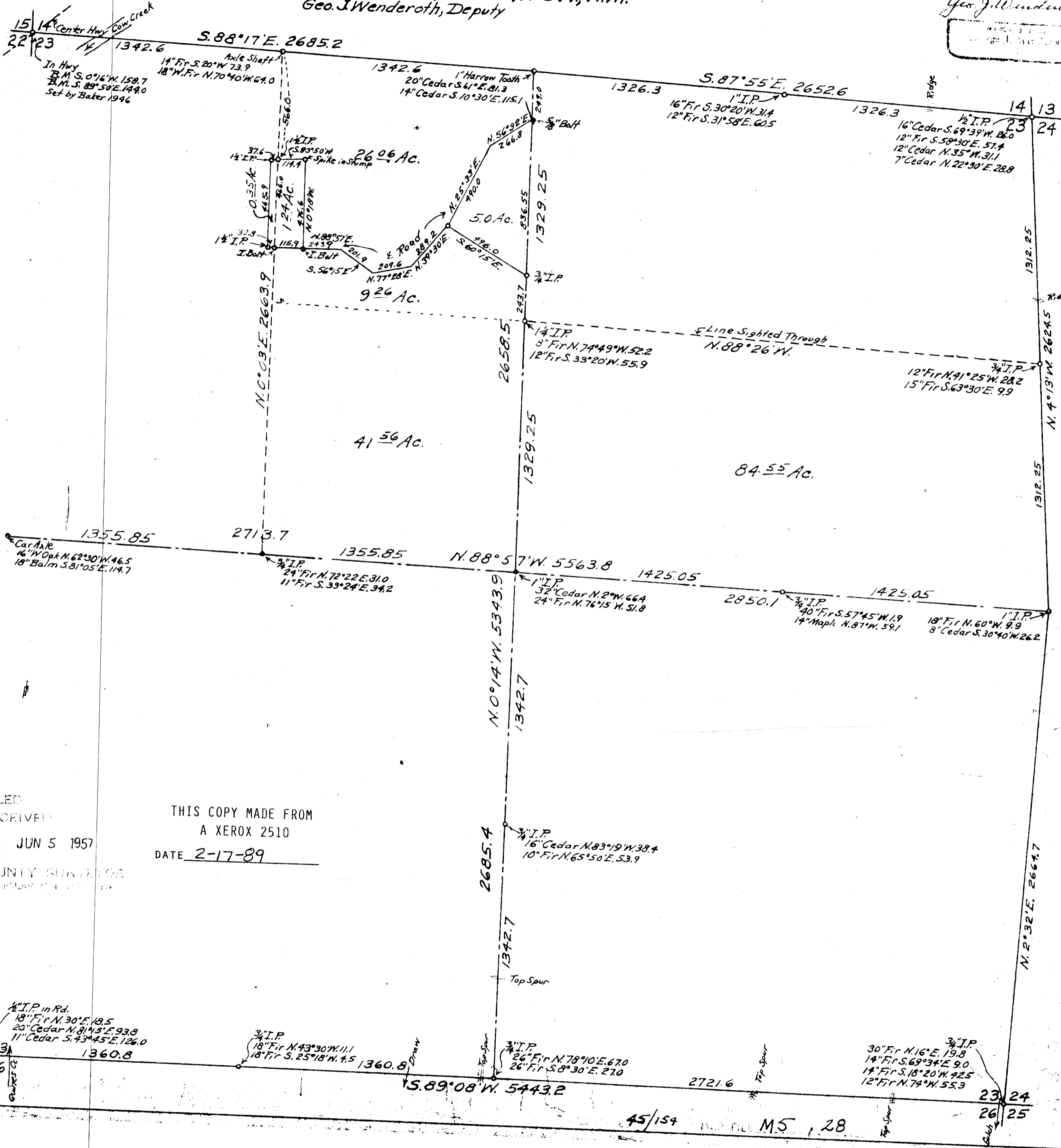
D. & R. Brady, April 1953
K. Brady, April 1957

82 1 SW
CS 45/154

COUNTY SURVEYOR'S OFFICE
DOUGLAS COUNTY, OREGON.
Survey's in
SECTION 23, T.32S., R.5W., W.M.
Geo. J. Wenderoth, Deputy

DO NOT REMOVE

REGISTERED
OREGON
LAND SURVEYOR
Geo. J. Wenderoth



FILED
RECEIVED
JUN 5 1957

THIS COPY MADE FROM
A XEROX 2510
DATE 2-17-89

COUNTY SURVEYOR
DOUGLAS COUNTY, OREGON

45/154 M 5, 28