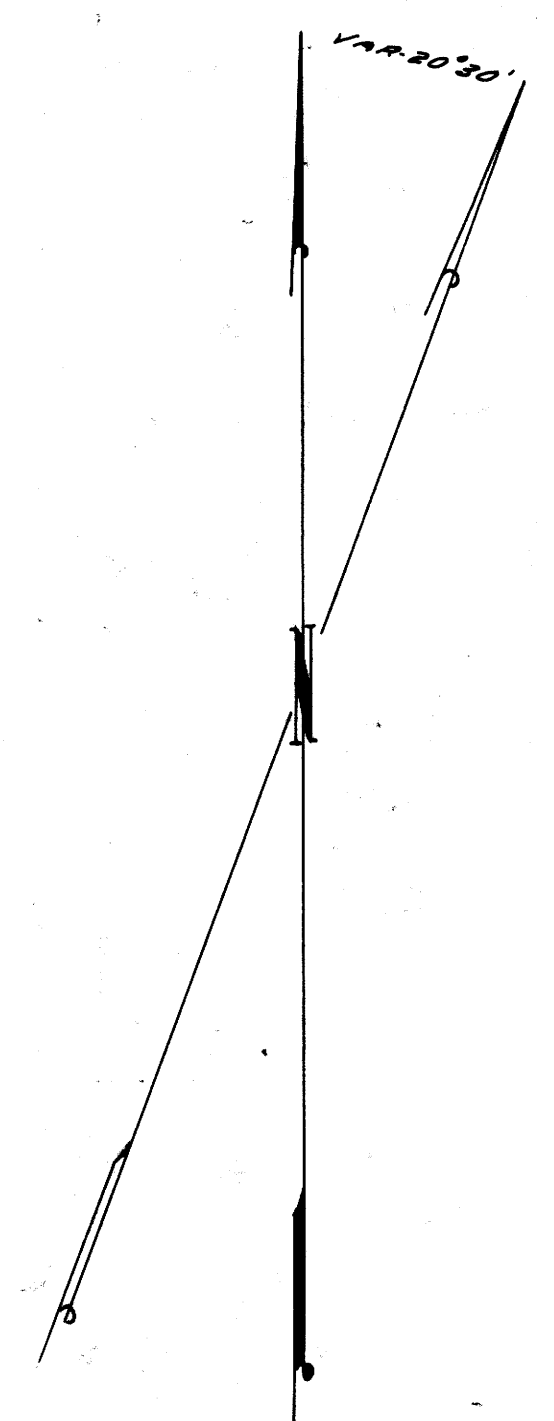
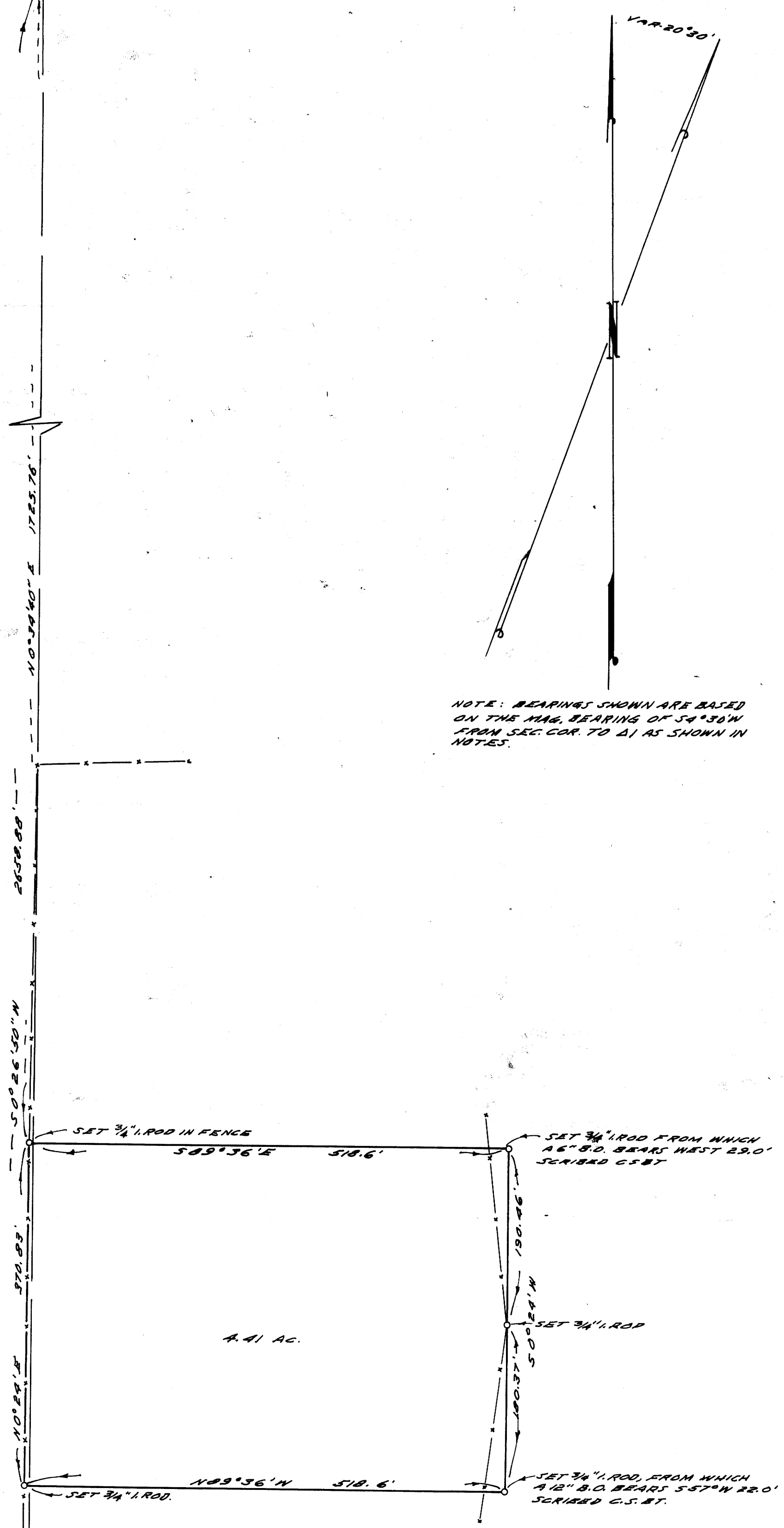


18 17 FOUND 1 1/2" PIPE  
19 20 SEE C.S. FILE 40/237



NOTE: BEARINGS SHOWN ARE BASED ON THE MAG. BEARING OF S4°30'W FROM SEC. COR. TO A1 AS SHOWN IN NOTES.



FOUND 1" SHARP IN NORTH SOUTH FENCE LINE, RE NEW 1/4 COR. 19120 T26S, R3W, BLAZED & SCRIBED 14" W. O. S36°30'N 24.5' 19 C.S. BT. BLAZED & SCRIBED 10" PIPE N83°08' 44.0' 145.20 C.S. BT.

FOUND 12" X 15" ROCK IN OLD RAIL FENCE, POSSIBLE B.L.C. CORNER

COUNTY SURVEYORS FILE  
DO NOT REMOVE FROM OFF.

COUNTY SURVEYOR'S OFFICE  
DOUGLAS COUNTY, OREGON

SURVEY FOR DEED DESCRIPTION  
SECTION 19, & 20 T26SR3W, W.M.

FRED M. DARBY COUNTY SURVEYOR  
SURVEYED MAY 24, 1957 BY  
JAMES W. BYRON - DEPUTY SCALE 1" = 100'  
SURVEYED FOR HUGH JONES

REGISTERED  
OREGON  
LAND SURVEYOR  
James W. Byron  
JAMES W. BYRON  
200