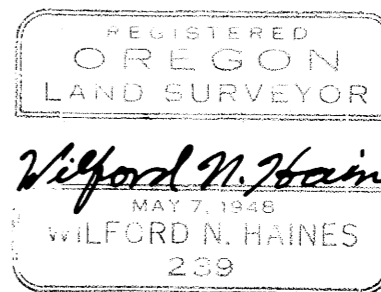


**DO NOT REMOVE FROM OFFICE**

# T23S R7W Section 12

## Survey Made For E. G. Whipple of Drain, Oregon To Determine Lines and Corners

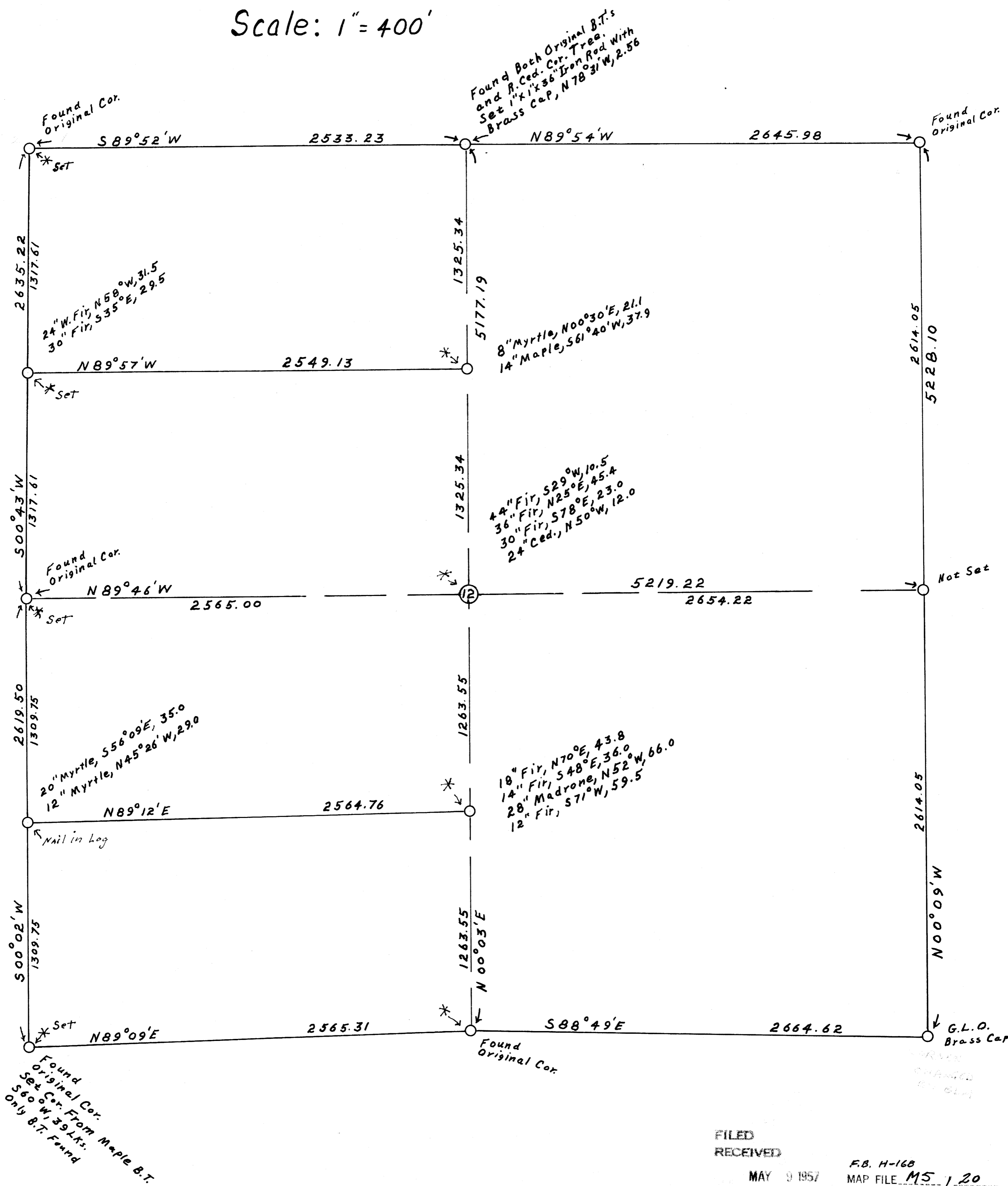
Surveyed **1956**  
Wilford N. Haines #239



Note: Bearings Determined From Magnetic Needle.  
Declination 21°30'

\* Set 1"x1"x36" Iron L Rods With Brass Caps  
Inscribed "Wilford N. Haines, Survey Pt., #239"

Scale: 1" = 400'



FILED  
RECEIVED

MAY 9 1957

FB. H-168

MAP FILE MS 120

COUNTY SURVEYOR  
DOUGLAS COUNTY, ORE.

AWB