

MAP FILE **MS 719**
 C.S. FILE NO. **42/258**

COUNTY SURVEYORS FILE DAY
DO NOT REMOVE FROM OFFICE

Survey for :
OREGON STATE BOARD OF FORESTRY
OREGON FOREST NURSERY - ELKTON, ORE.

SEC. 1, 2, 11 & 12 T.23S. R.8 W.W.M.
 DOUGLAS COUNTY, OREGON

TRANSIT AND CHAIN SURVEY BY: LWA. AG. D.S. E.D. D.B. B.D. H.B.
 R.M.B. V.M.

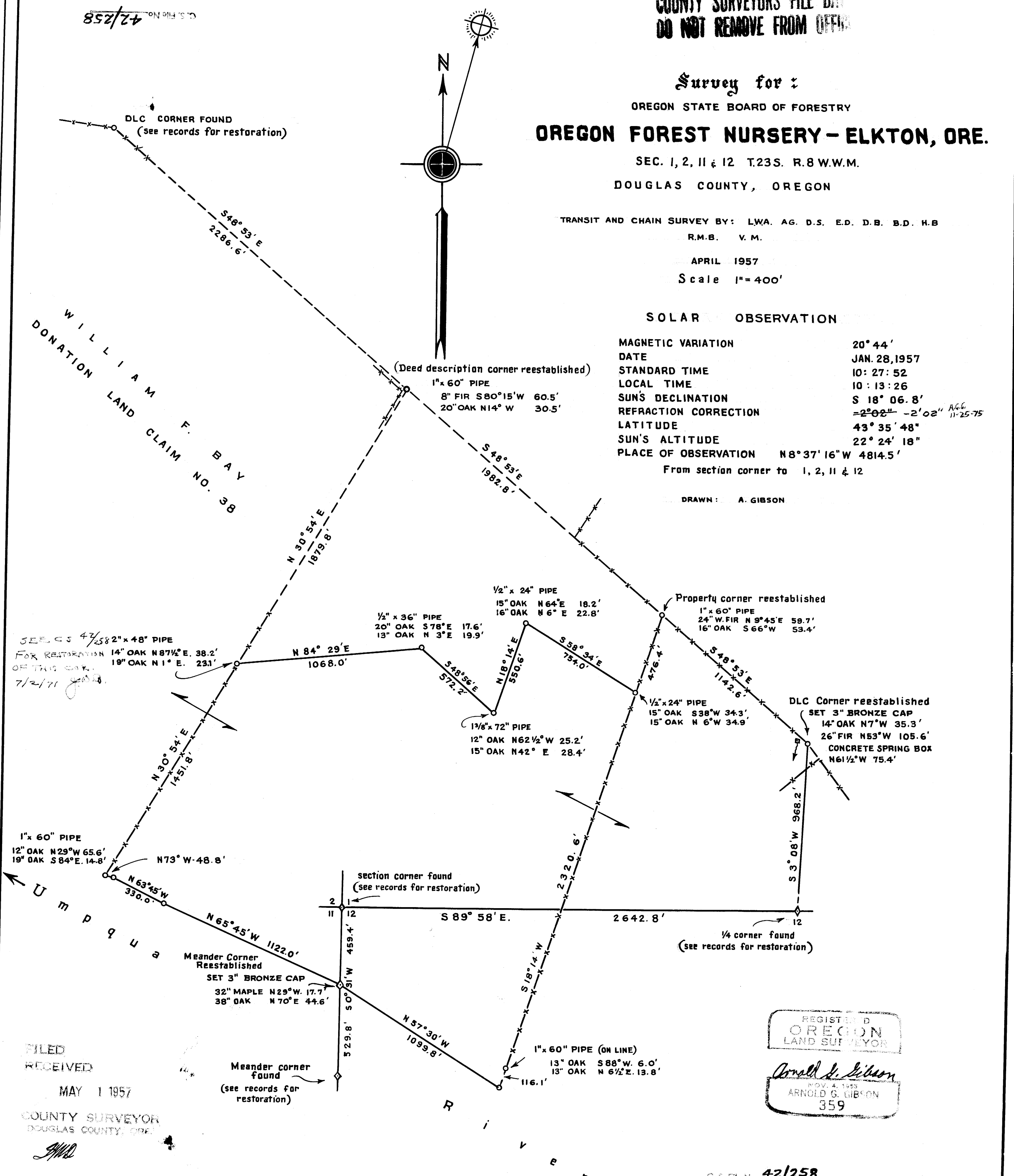
APRIL 1957

Scale 1" = 400'

SOLAR OBSERVATION

MAGNETIC VARIATION	20° 44'
DATE	JAN. 28, 1957
STANDARD TIME	10: 27: 52
LOCAL TIME	10: 13: 26
SUN'S DECLINATION	S 18° 06. 8'
REFRACTION CORRECTION	-2° 02" -2' 02" <small>AG 6/ 11-25-75</small>
LATITUDE	43° 35' 48"
SUN'S ALTITUDE	22° 24' 18"
PLACE OF OBSERVATION	N 8° 37' 16" W 4814.5'
From section corner to 1, 2, 11 & 12	

DRAWN: A. GIBSON



SEE CS 42/258 2" x 48" PIPE
 FOR RESTORATION 14" OAK N 87 1/2° E. 38.2'
 OF THIS CORNER. 19" OAK N 1° E. 23.1'
 7/2/71

FILED
 RECEIVED
 MAY 1 1957
 COUNTY SURVEYOR
 DOUGLAS COUNTY, ORE.
AGD

REGISTERED
 OREGON
 LAND SURVEYOR
Arnold G. Gibson
 NOV. 4, 1953
 ARNOLD G. GIBSON
 359