

COUNTY SURVEYORS FILE
DO NOT REMOVE FROM OFFICE

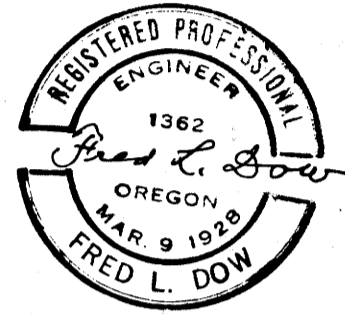
LEO L. PRATT

PART OF LOTS 3 & 4, PLAT "L", S.L. & W. CO.

SUTHERLIN

SEPTEMBER 1954

SCALE 1" = 50'

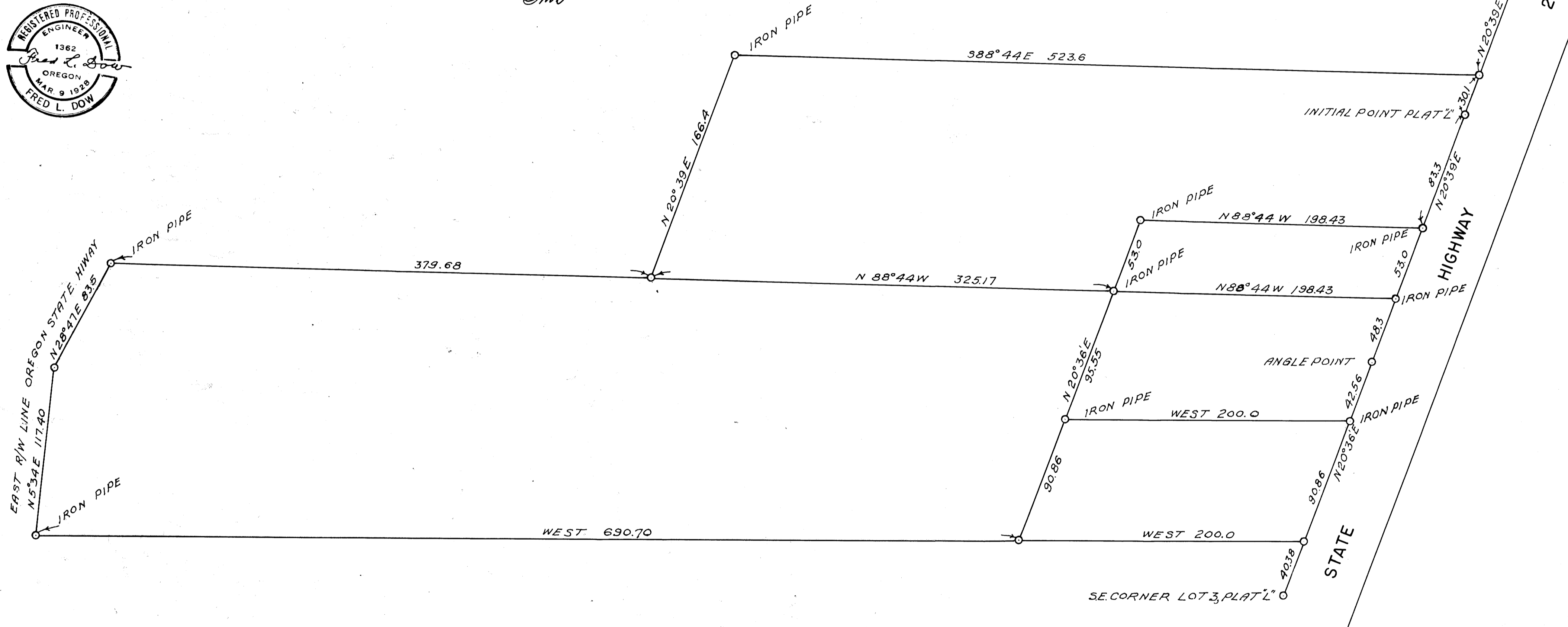


FILED
RECEIVED

MAR 25 1957

COUNTY SURVEYOR
DOUGLAS COUNTY, ORE.

AWD



MAP FILE M5/17
C.S. 50/112

C.S. 50/112
MAP FILE M5/17

S.C.M. T255, R5W.