

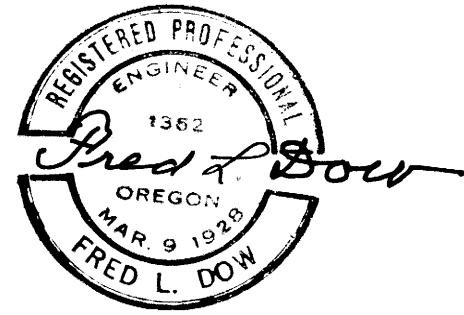
N.W. Corner Levi Knott D.L.C. No. 53  
T. 25 S. R. 5 W.  
2" IRON PIPE

COUNTY SURVEYORS FILE DATE  
DO NOT REMOVE FROM FILE

# J.W. CULVER & JACK CULVER PROPOSED SITE SUTHERLIN SEWAGE TREATMENT PLANT

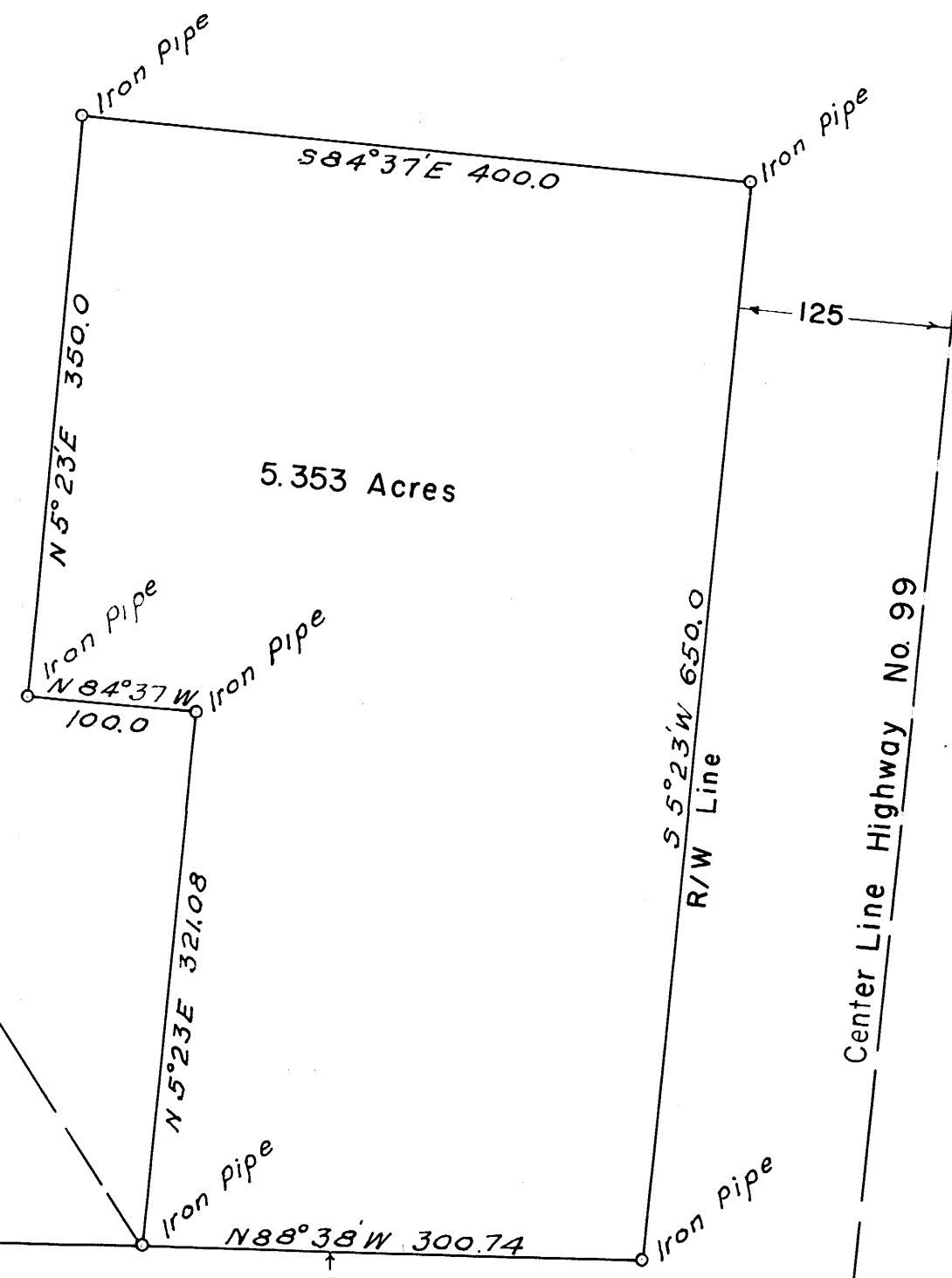
JANUARY 1955

SCALE 1" = 100'



320.00  
155.00

S 32° 29' E 1342.45



FILED  
RECEIVED  
MAR 25 1957  
COUNTY SURVEYOR  
DOUGLAS COUNTY, ORE  
JMD

Center Line Highway No. 225

Center Line Highway No. 99