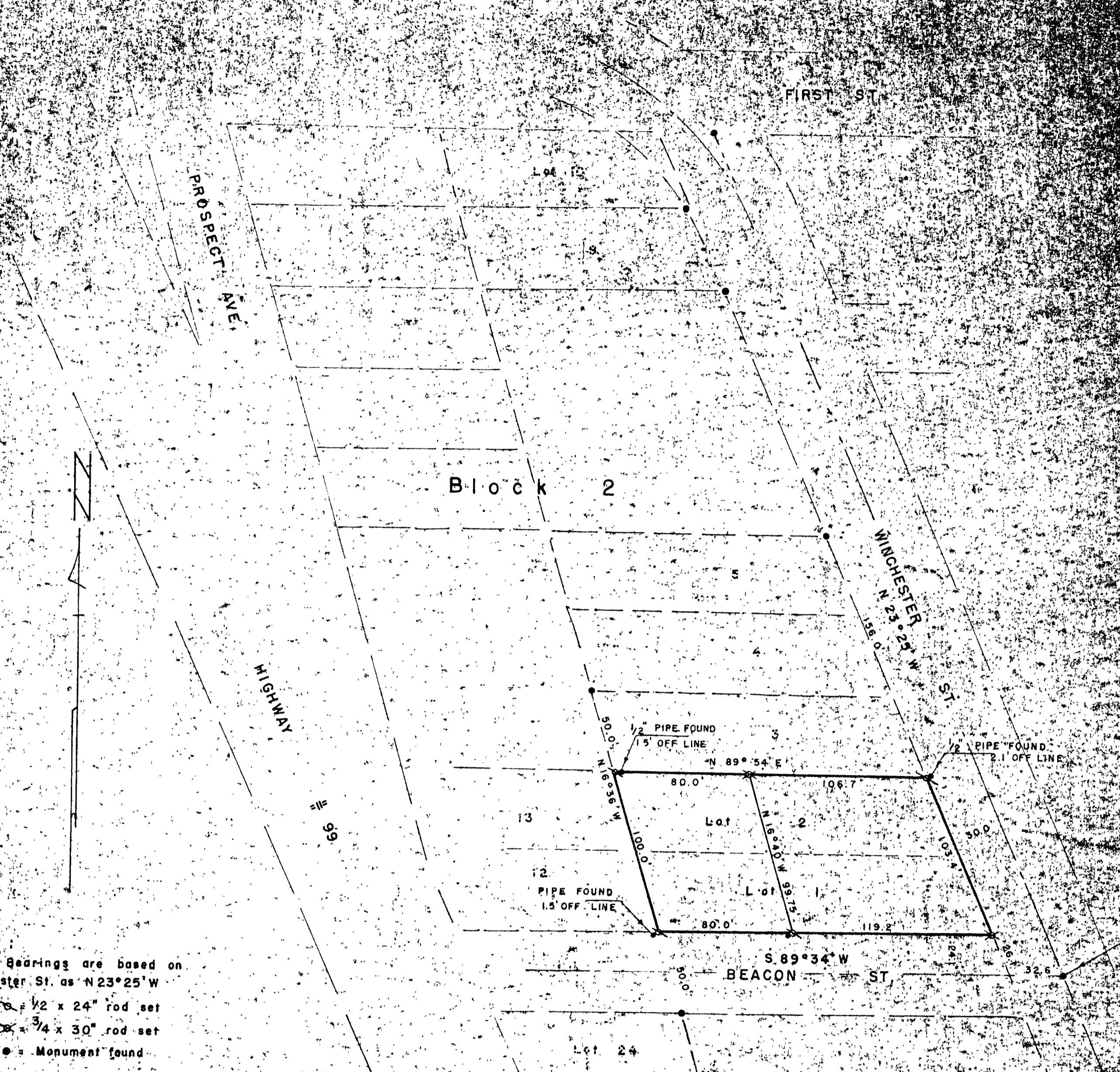


FILED  
 RECEIVED  
 JAN 2 1956  
 COUNTY SURVEYOR  
 DOUGLAS COUNTY, ORE.  
*JWA*



NOTES:  
 Bearings are based on  
 Winchester St. as N 23° 25' W  
 ○ = 1/2 x 24" rod set  
 X = 3/4 x 30" rod set  
 ● = Monument found  
 For more detail in Block 2, see  
 Co. Surveyors File No. 47 / 51



PLAT OF  
**Lots 1 & 2**  
 BLOCK 2, NO. PARK ADDITION  
 Roseburg, Oregon  
 JUNE 1956, SCALE 1" = 50'  
 For Clarence Grobbs

COUNTY SURVEYORS FILE  
 DO NOT REMOVE THIS

THIS COPY MADE FROM  
 A XEROX 2510  
 DATE 2-9-89