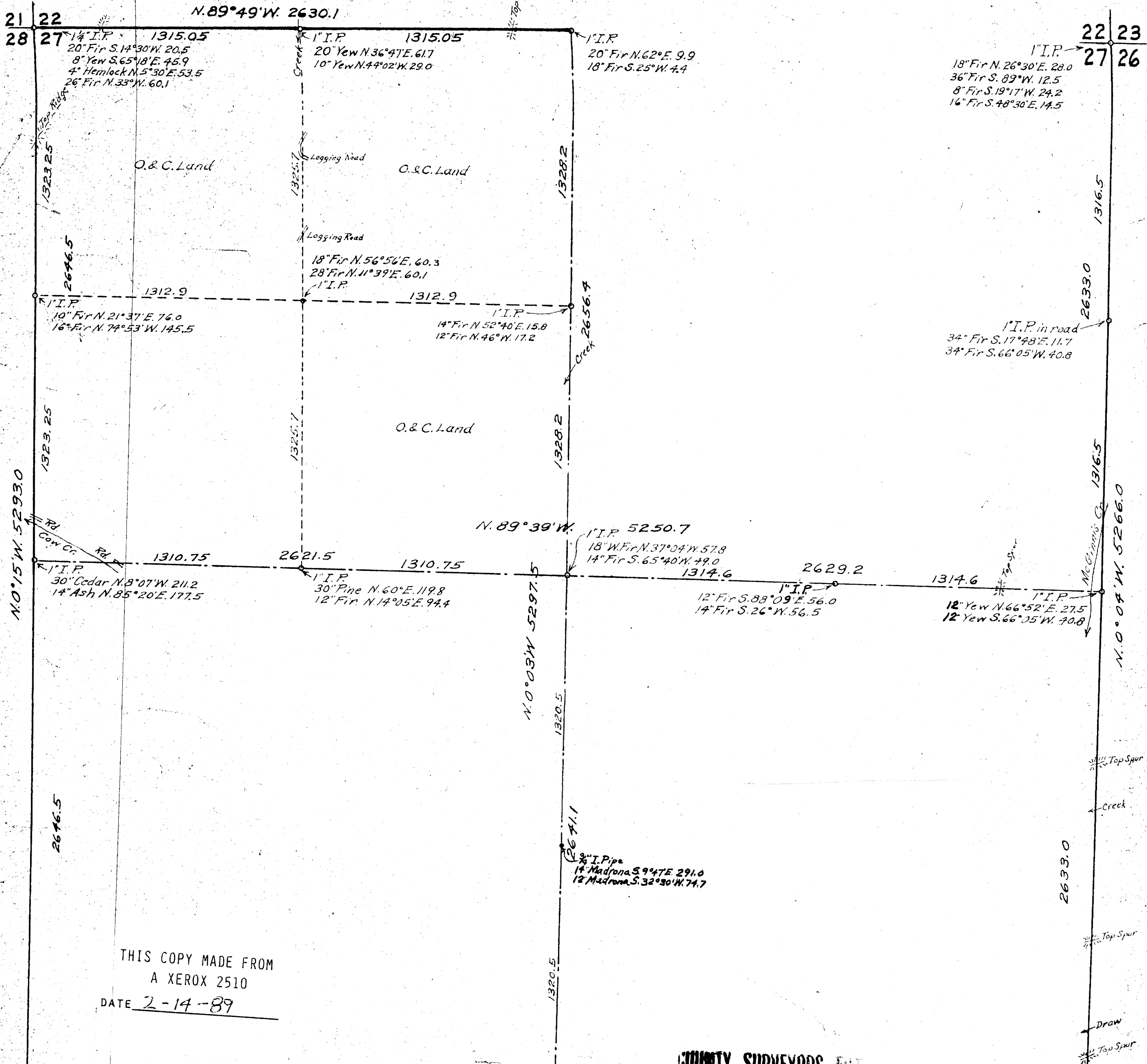


SL 1 4W  
M4  
62/04 S 0



THIS COPY MADE FROM  
A XEROX 2510  
DATE 2-14-89

COUNTY SURVEYORS FILE NO.  
DO NOT REMOVE FROM OFFICE

28 27  
33 34  
1\"/>

REGISTERED  
OREGON  
LAND SURVEYOR  
George J. Wundersmith  
1947

COUNTY SURVEYOR'S OFFICE  
DOUGLAS COUNTY, OREGON  
Survey of N.W. 1/4 Section 27  
T. 31 S., R. 4 W. W.M.  
Scale 1" = 400ft.  
1947

27 26  
34 35  
1\"/>

C.S. File No. 4029

CS FILE FOLDER

CONTAINS

MORE

INFORMATION