

FILED
RECEIVED

JAN 23 1956

COUNTY SURVEYOR

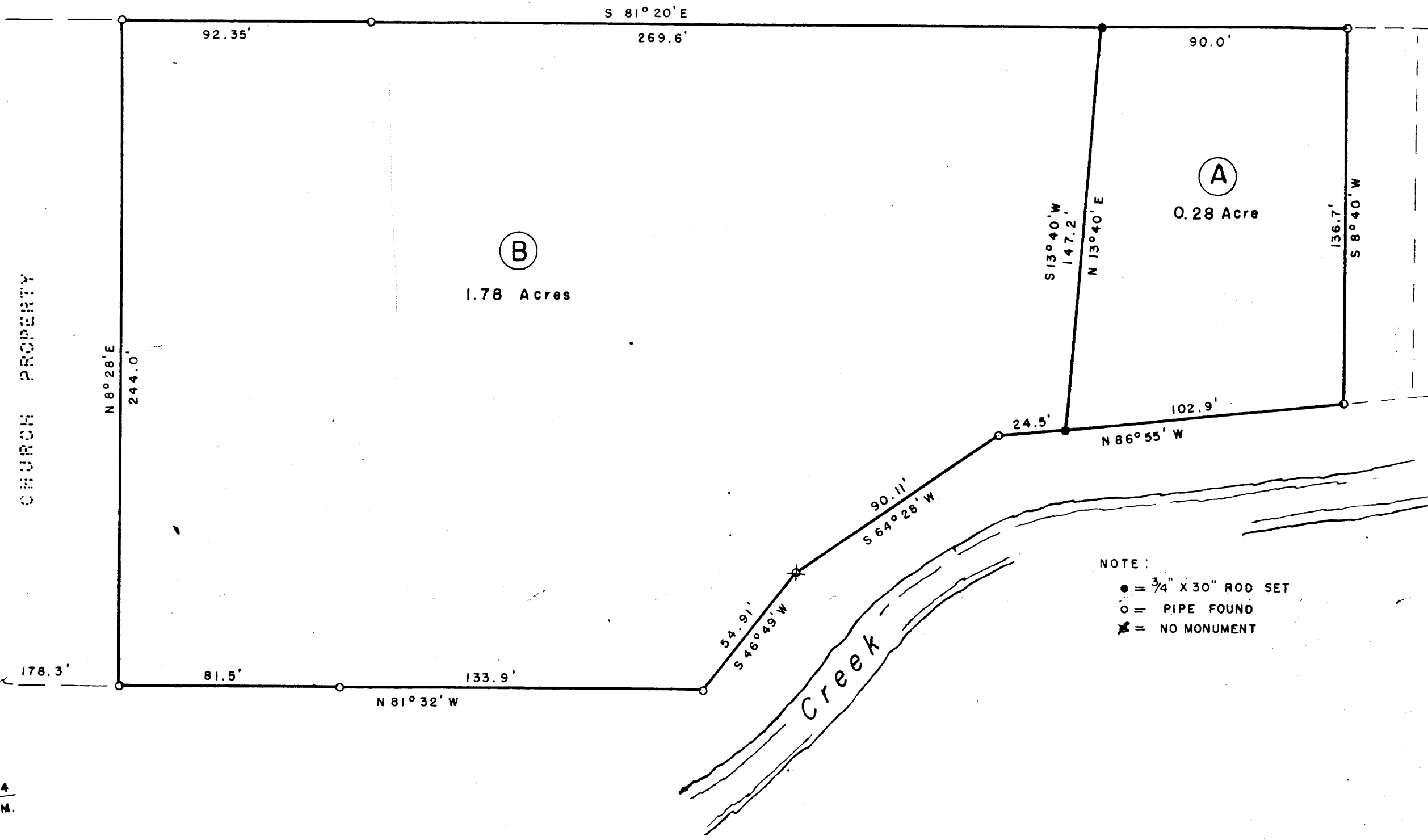
Hub

MA 4-7
42/213

95.42/213
MA 4-7

MELROSE

ROAD



NOTE:
 ● = 3/4" X 30" ROD SET
 ○ = PIPE FOUND
 ✕ = NO MONUMENT

THIS COPY MADE FROM
 A XEROX 2510
 DATE 2-9-89

N.W. COR. D.L.C. 64
 T 27 S - R 6 W - W.M.

Percy C. Smithburg
 PERCY C. SMITHBURG
 COUNTY SURVEYOR
 DOUGLAS COUNTY, OREGON

PLAT OF
F. A. WILLIAMS PROPERTY
 IN SECTION 6, T27S, R6W, W.M., DOUGLAS COUNTY, ORE.
 JANUARY 1957 SCALE 1" = 40'

COUNTY SURVEYORS
 DO NOT REMOVE FROM

C.S. File No. 42/213

MAP FILE MA 1.1